

Apps to make Cabinet Vision work for you.

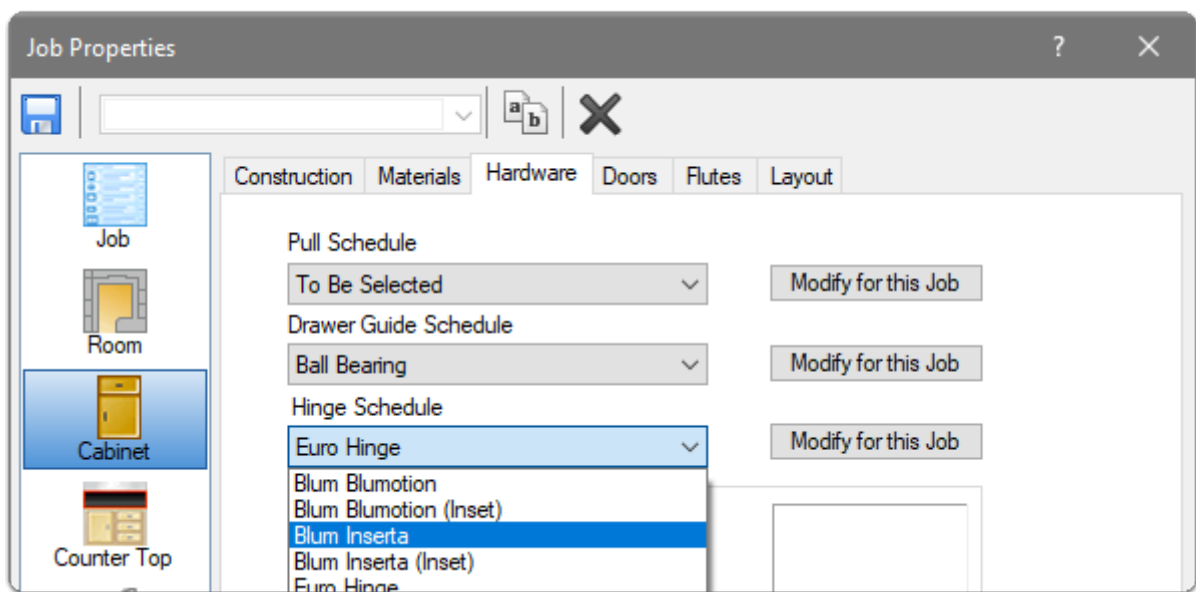
Blum Inserta Hinges - User Guide

💡 Contents of this Article...

- Automatically assigned hinges
- Inset Doors and Drawers
- Inner Drawer clearance for Spacer Blocks (Setting is per hinge)

Let's start a job and check out the hinges assigned to the different cabinet shapes

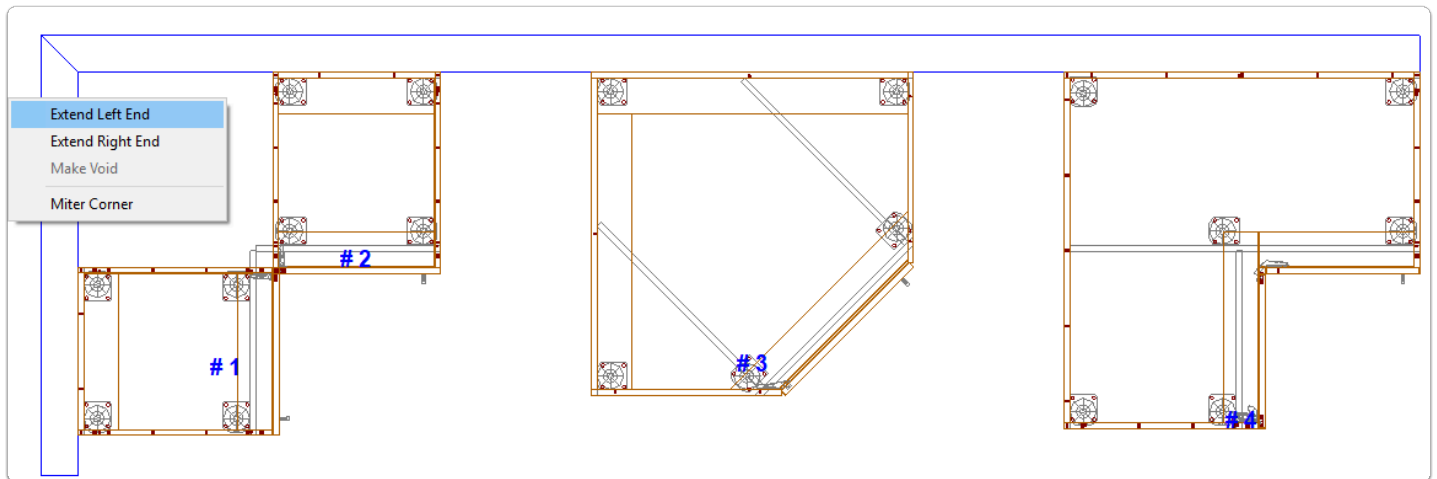
a) Job Properties > Cabinet > Hardware > Select Blum Inserta hinges while starting the job



b) Draw a couple of walls and place cabinets something like this - In my example, the two base one door cabinets are bumped out of the corner and the Left End Extended...

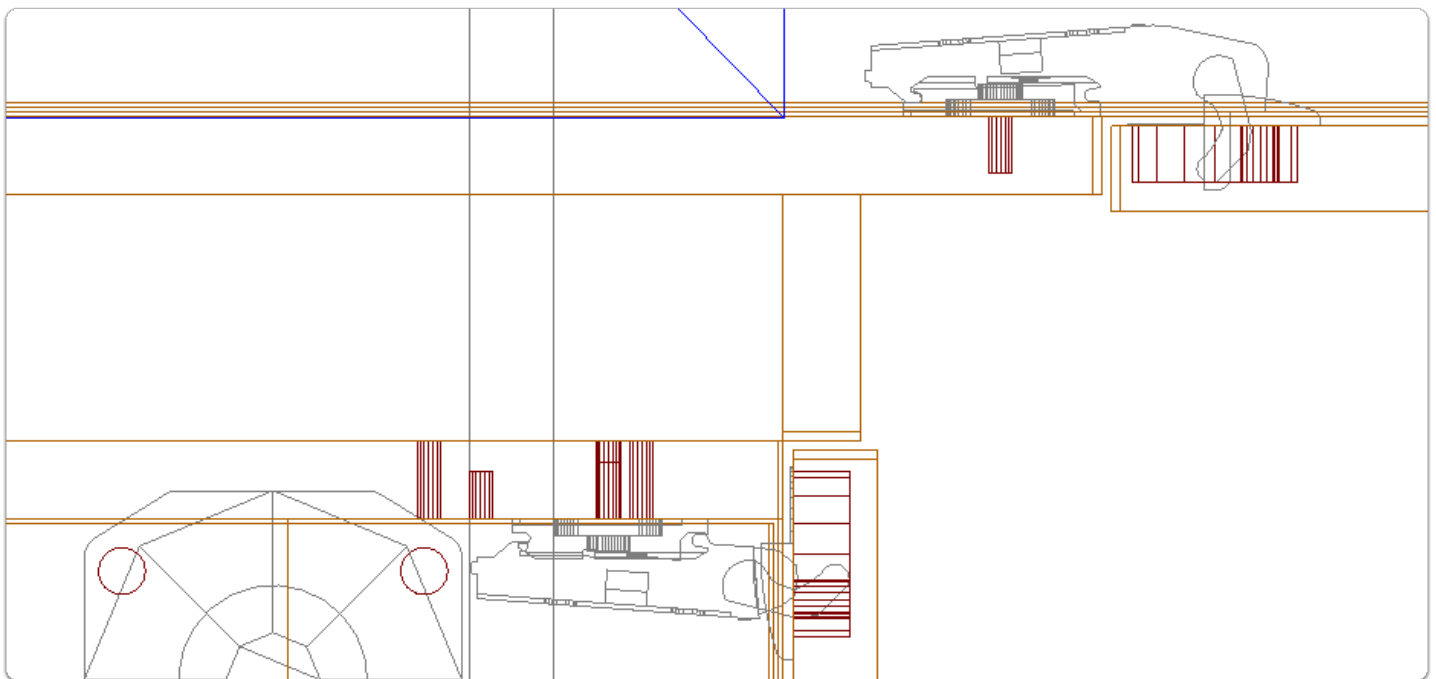
Apps to make Cabinet Vision work for you.

Blum Inserta Hinges - User Guide



c) The result of extending an end is an automatic selection of the blind hinge

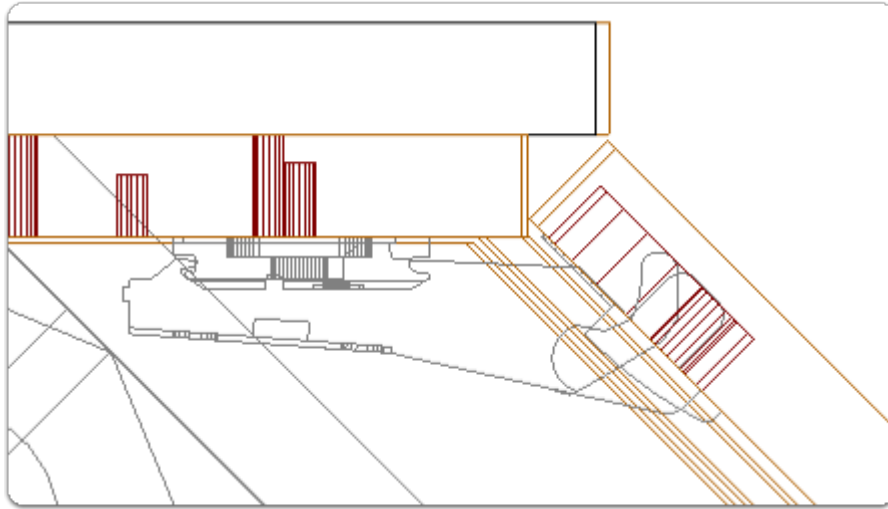
! Note: This automation feature is not available in Solid Standard - The blind hinge must be selected by the detailer from the door section



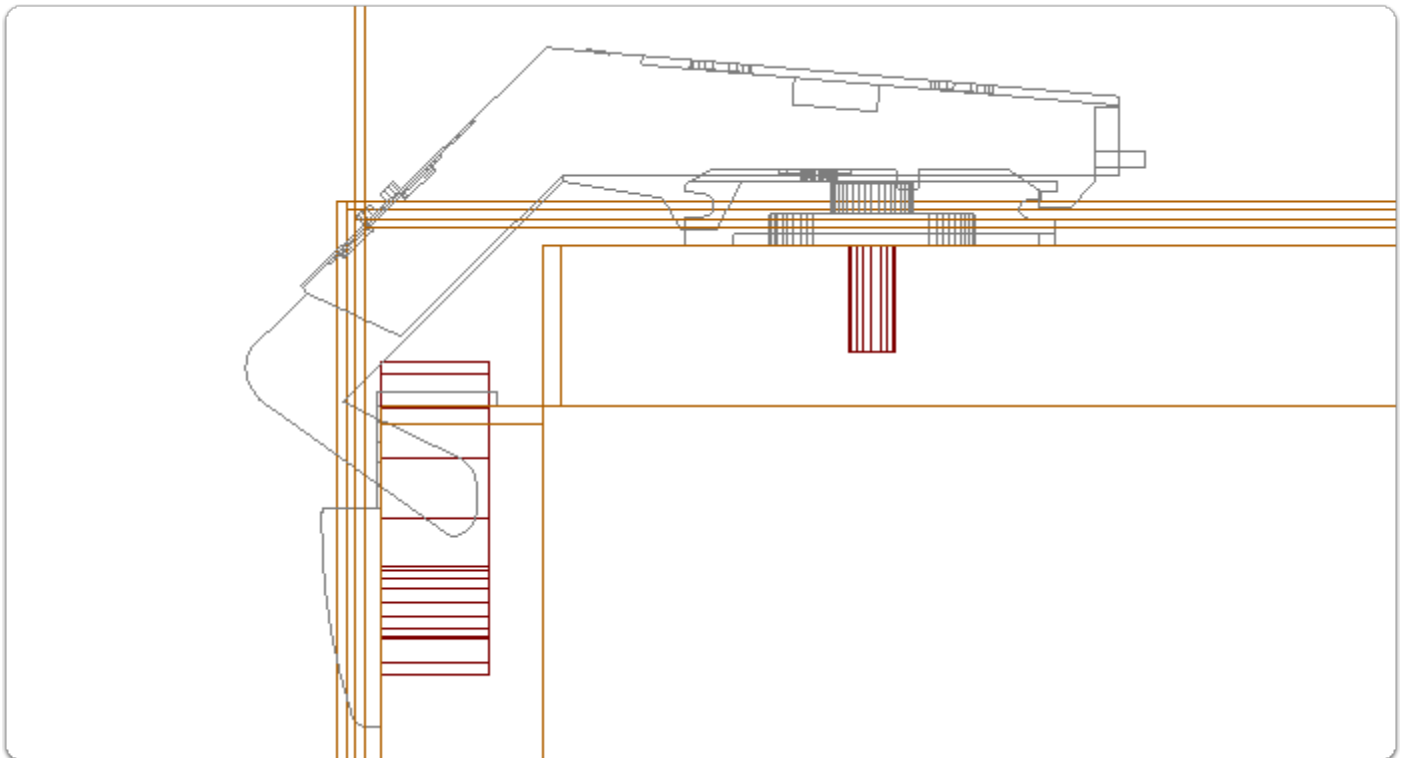
d) The 45 degree hinge...

Apps to make Cabinet Vision work for you.

Blum Inserta Hinges - User Guide



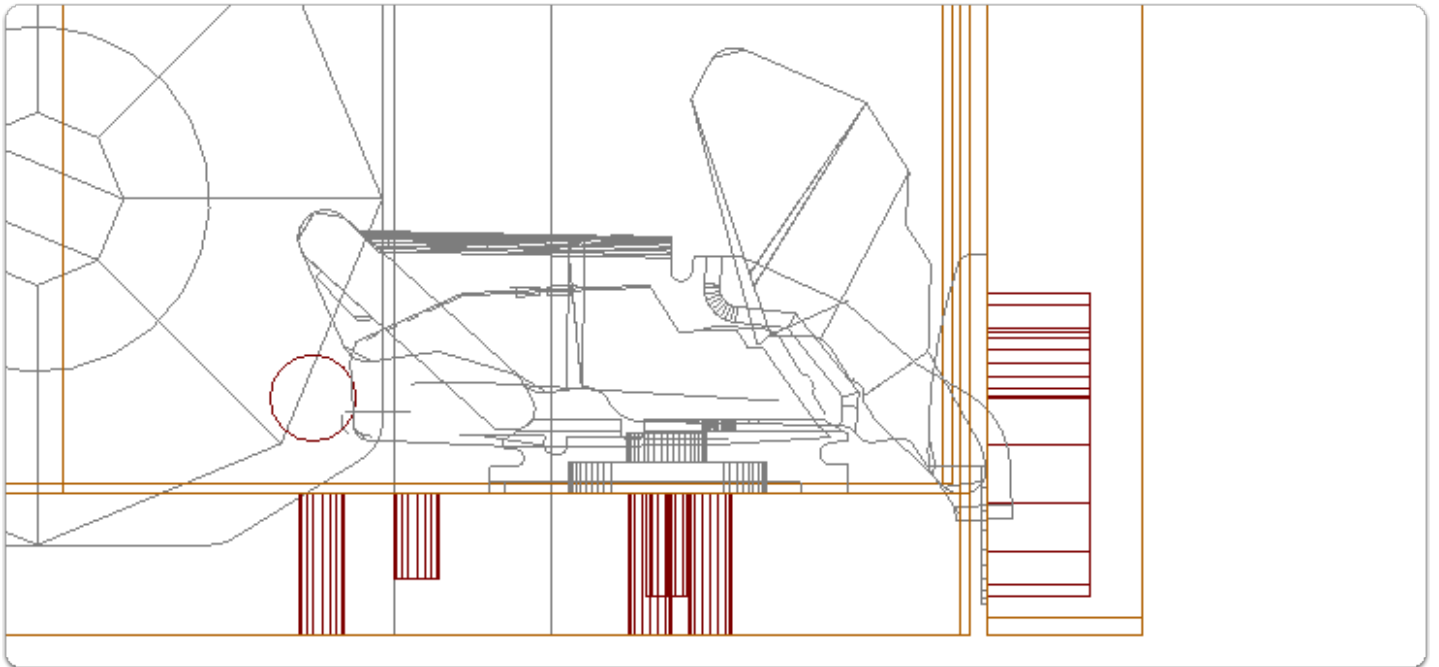
e) The Double Door Hinge...



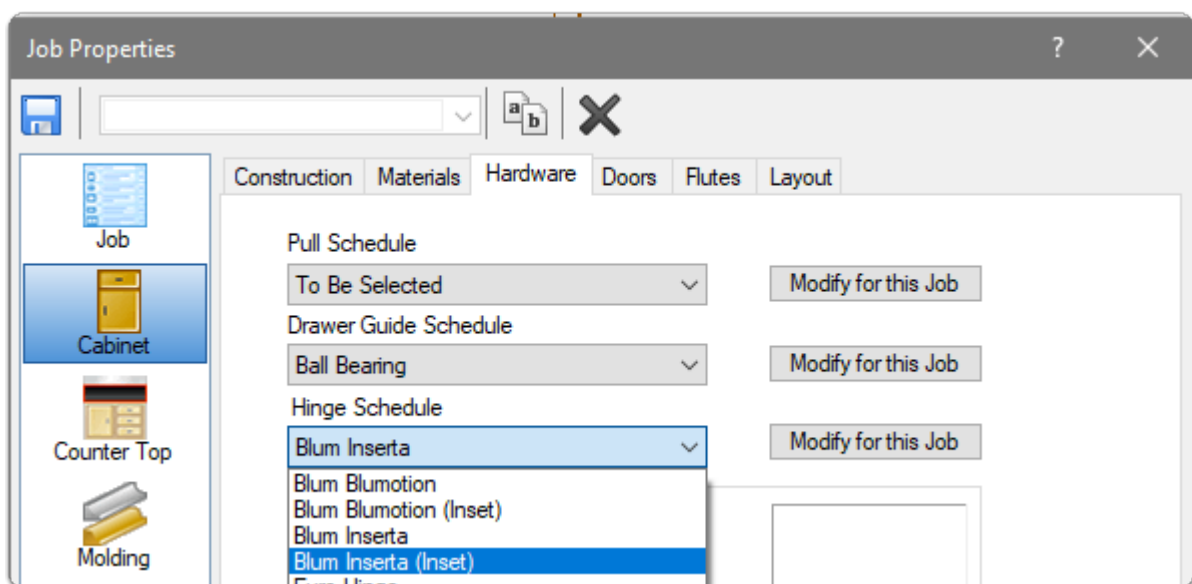
f) The 170 degree hinge...

Apps to make Cabinet Vision work for you.

Blum Inserta Hinges - User Guide



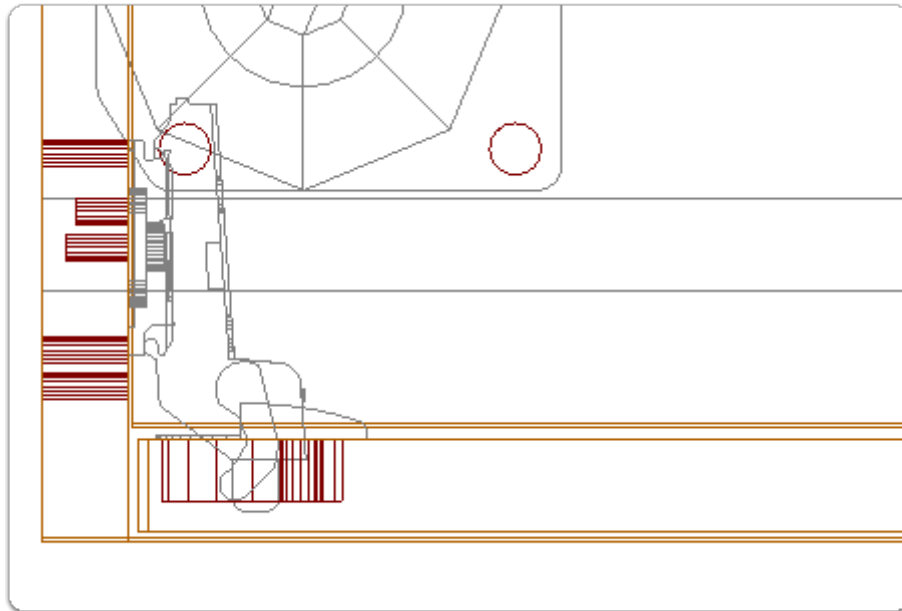
Select the Inset Hinge Schedule at the Job, Room or Cabinet level to inset doors and drawers...



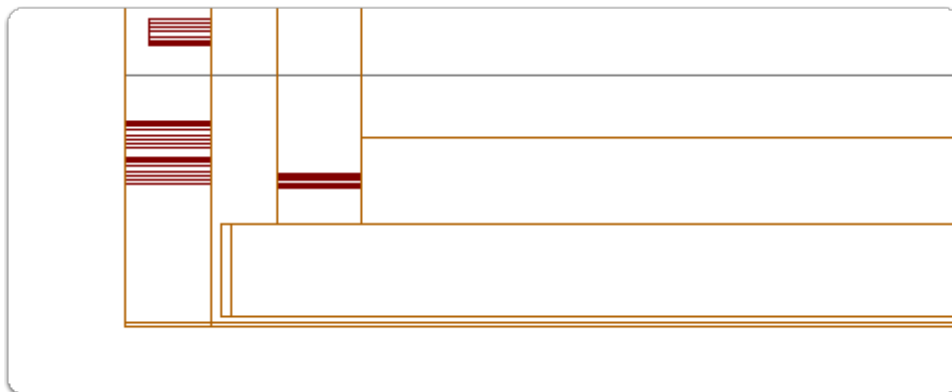
a) Full Crank Hinge

Apps to make Cabinet Vision work for you.

Blum Inserta Hinges - User Guide



b) Inset Drawers



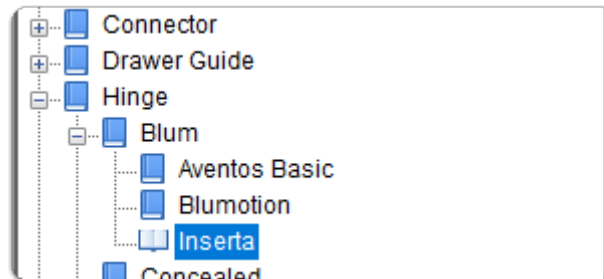
In this section we look at the 'Roll Out'clearances set in the material manager for each hinge...

For some hinges Spacer Blocks are required to provide clearance between Inner Drawers and the door - Cabinet Vision has placed the setting for this on each hinge - You can review your expectations in the material manager

a) Open the Material Manager and navigate to the Inserta group

Apps to make Cabinet Vision work for you.

Blum Inserta Hinges - User Guide



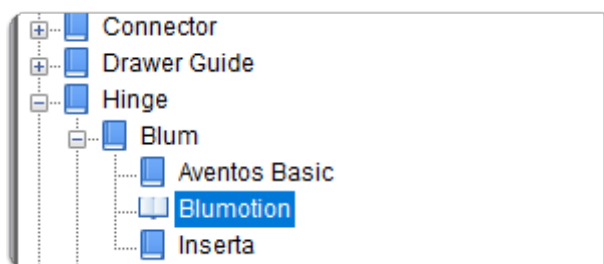
b) Click 'Hinge'

Roll Out Clearance provides inner drawers with a space for Hack Spacers

	Material	Hinge	finishes	Finish Types	Textures					
Name	Type	Horizo...	Vertic...	Door End To Hinge	Inset	Maximum Spacing	Opening Angle	Door ...	Roll Out Clearance	
Blum 95° Blind (Inserta Cliptop)	Concealed	15.5	15.5	100	-2	762	95.000	22	0	
Blum 45° (Inserta Cliptop)	Concealed	15.5	15.5	100	-7	762	95.000	22	0	
Blum 110° (Inserta Cliptop)	Concealed	0	0	100	-2	750	110.000	22	25	
Blum 107° Inset (Inserta Cliptop)	Concealed	0	0	100	20	750	110.000	22	25	
Blum 170° (Inserta Cliptop)	Concealed	15.5	15.5	100	-2	762	175.000	22	0	
Blum 155° Zero Protrusion (Inserta Cliptop)	Concealed	15.5	15.5	100	-2	762	175.000	22	0	

💡 The hinges that have 25mm will automatically get spacer blocks when using Joinery IT System Inner Drawers

c) Also review Blumotion hinges and set your desired Roll Out Clearances



Name	Type	Horizo...	Vertic...	Door End To Hinge	Inset	Maximum Spacing	Opening Angle	Door ...	Roll Out Clearance
Blum 110° (Blumotion)	Concealed	0	0	100	-2	750	110.000	22	25
Blum 107° Inset (Blumotion)	Concealed	0	0	100	20	750	110.000	22	25
Blum 95° Blind (Blumotion)	Concealed	15.5	15.5	100	-2	750	95.000	22	0
Blum 45° (Blumotion)	Concealed	15.5	15.5	100	-7	762	95.000	22	0