

Apps to make Cabinet Vision work for you.

# Adjustable Shelf Pin Options - User Guide

## 💡 Contents of this Article...

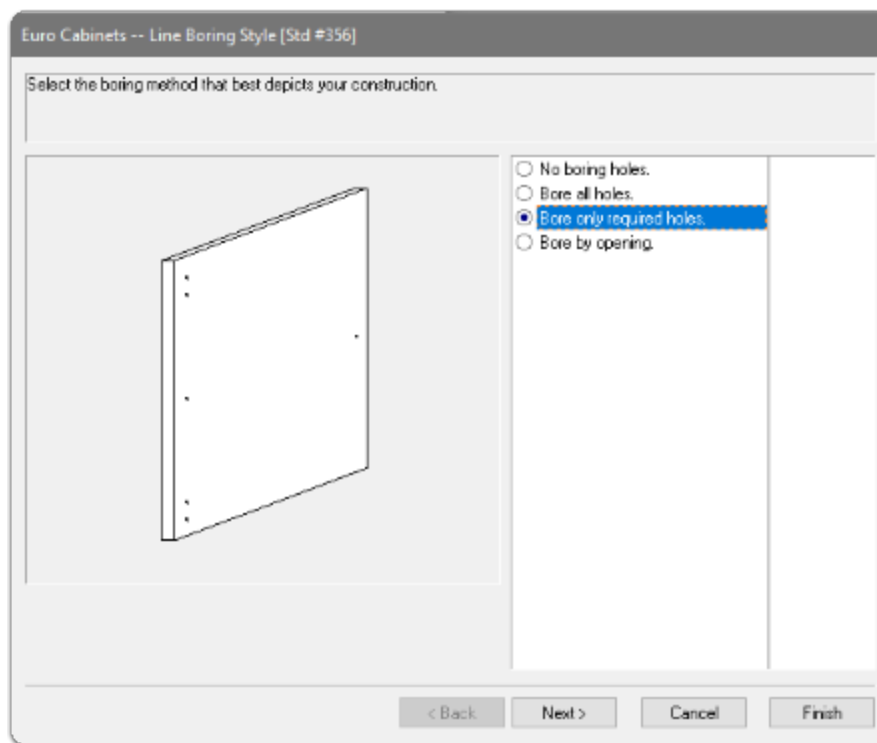
- Line Bore settings in Assembly Construction
- Setting your defaults in UCS Public Variables
- Cabinet Level Attribute
- Adjustable Shelf Part Attributes
- Adding an extra support to the shelf

## Line Bore settings in Assembly Construction

The UCS in this package works with Cabinet Vision Linebore method 'Bore only required holes'. Let's start by checking some of these settings in the assembly construction...

*Note: I skip some settings here, where your decision is not important to the outcome.*

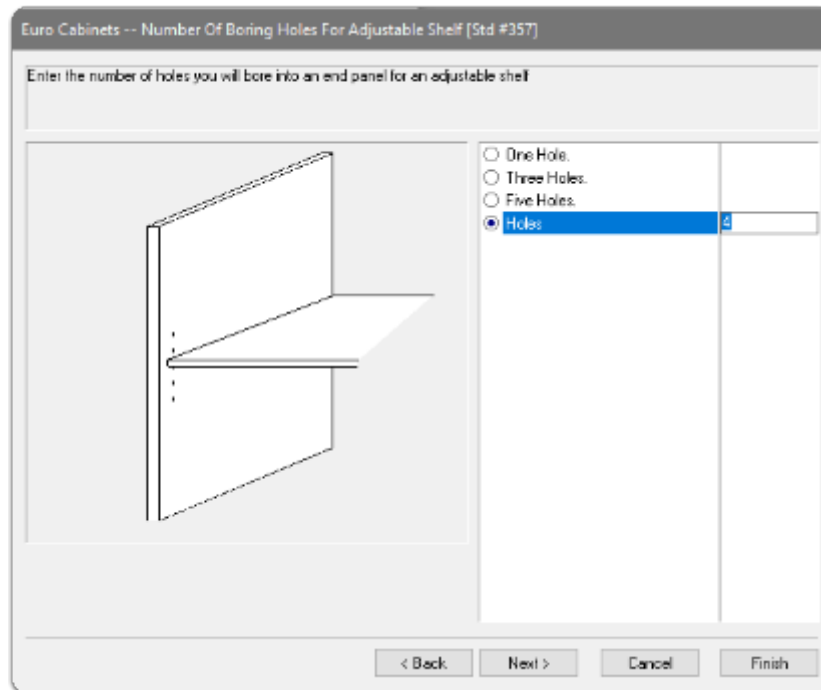
Line Boring Style - Select 'Bore only required holes'



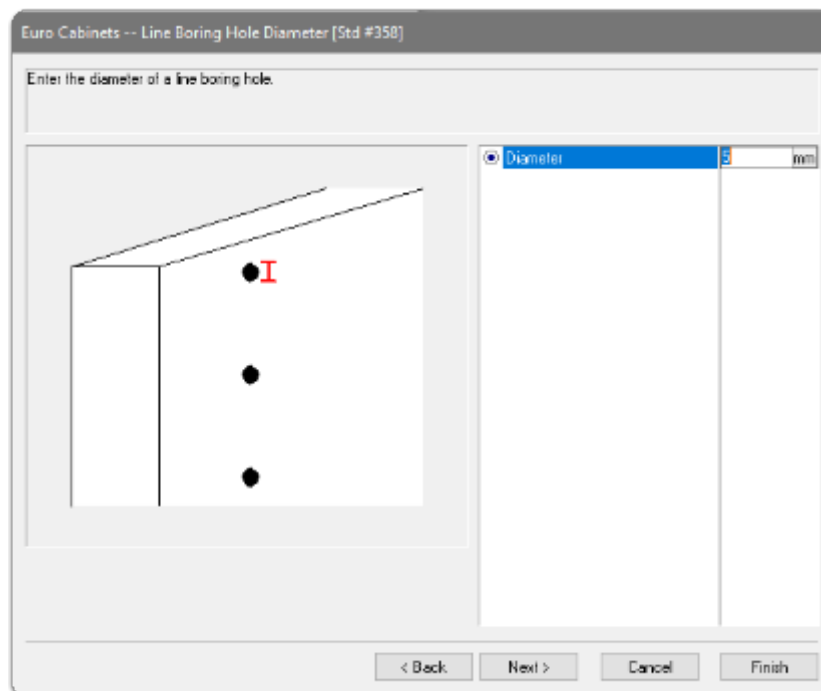
Select any number of holes - The number you wish to have as your default.

Apps to make Cabinet Vision work for you.

# Adjustable Shelf Pin Options - User Guide



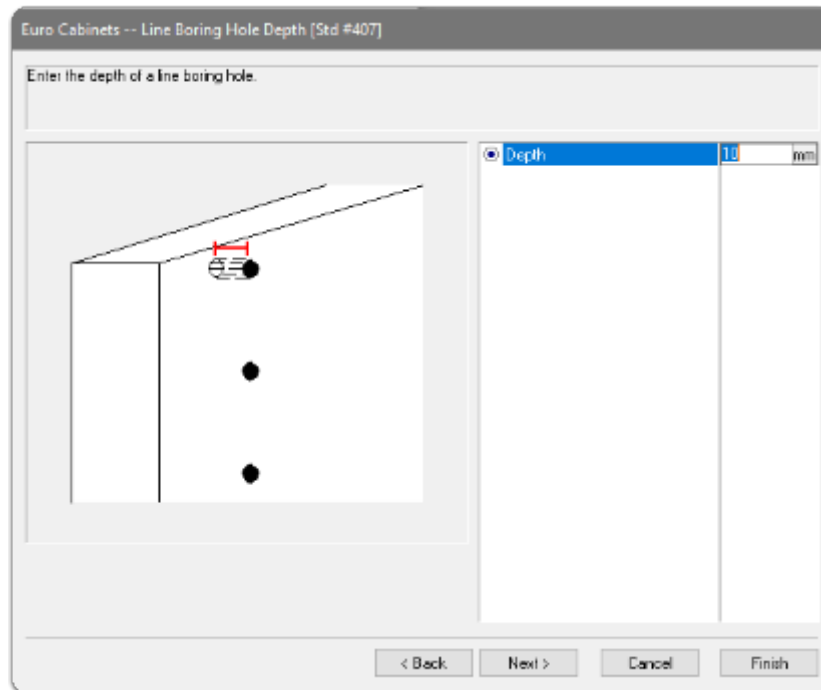
Line Boring Hole Diameter - I use 5mm in my example



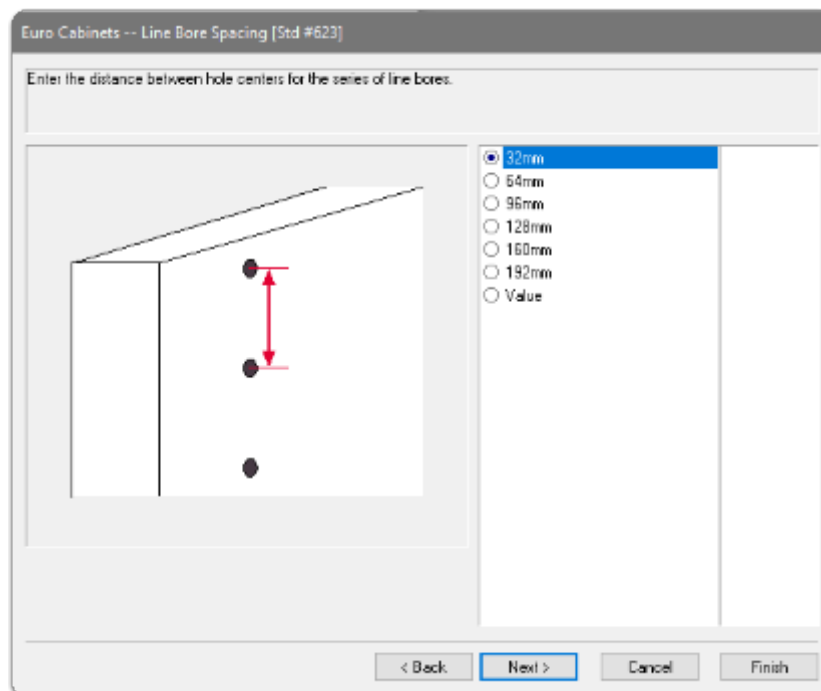
Line Boring Hole Depth - I use 10mm in my example

Apps to make Cabinet Vision work for you.

# Adjustable Shelf Pin Options - User Guide



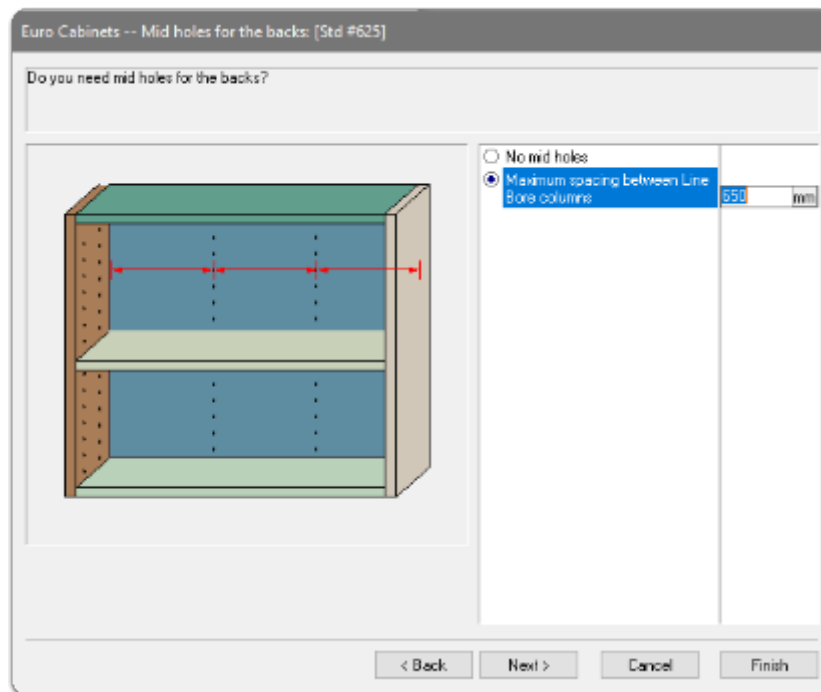
Line Bore Spacing - All options are valid



All mid holes are supported in the package. All cabinet types are also supported

Apps to make Cabinet Vision work for you.

# Adjustable Shelf Pin Options - User Guide



## Setting your defaults in UCS Public Variables

In this section we look at where to choose your options

Choose **default values** for your work-station using the **UCS Public Variables** on the 'Joinery IT (Adjustable Shelves)' UCS

- Here we can edit the values for the cam drilling, Shelf Bore and Shelf Rebate to suit the shelf supports you use at your business.

Apps to make Cabinet Vision work for you.

# Adjustable Shelf Pin Options - User Guide

Public Variables	
Cam Bore (DX)	20mm
Cam Bore (DZ)	12.5mm
Cam Bore (Offset)	9.5mm
Cam Post (Offset)	8mm
Shelf Bore (DX)	5mm
Shelf Bore (DZ)	7.5mm
Shelf Bore (Offset)	10mm
Shelf Rebate (DX)	6.5mm
Shelf Rebate (DY)	13.5mm
Shelf Rebate (DZ)	6mm
PC Default (Select)	Adjustable Pin
	Adjustable Pin
	Adjustable Pin Center of Shelf
	Adjustable Pin with Shelf Bore
	Adjustable Pin with Shelf Rebate
	Cam

💡 By changing the PC Default you will get that pin type on all new Adjustable Shelves added in Assembly Section View

Note: If cabinets are saved to the catalog with attributes preserved, the adjustable shelves will keep the option selected at the time they are saved

## Cabinet Level Attribute

### Adj Shelf (Relative Y Position in Cabinet)

- No control
- Center Bore in Cabinet Height
- Center Shelf in Cabinet Height

This attribute adds BOR\_FHOL parameter to the Assembly (A Cabinet Vision system parameter)

- Only active for "Bore Required Holes"

NOTE: Currently a program issue and the BOR\_FHOL parameter is not controlling the y position of the shelf in CV12.1.0.486 or CV2021.0.0.489.

## Adjustable Shelf - Part level attributes



Apps to make Cabinet Vision work for you.

# Adjustable Shelf Pin Options - User Guide

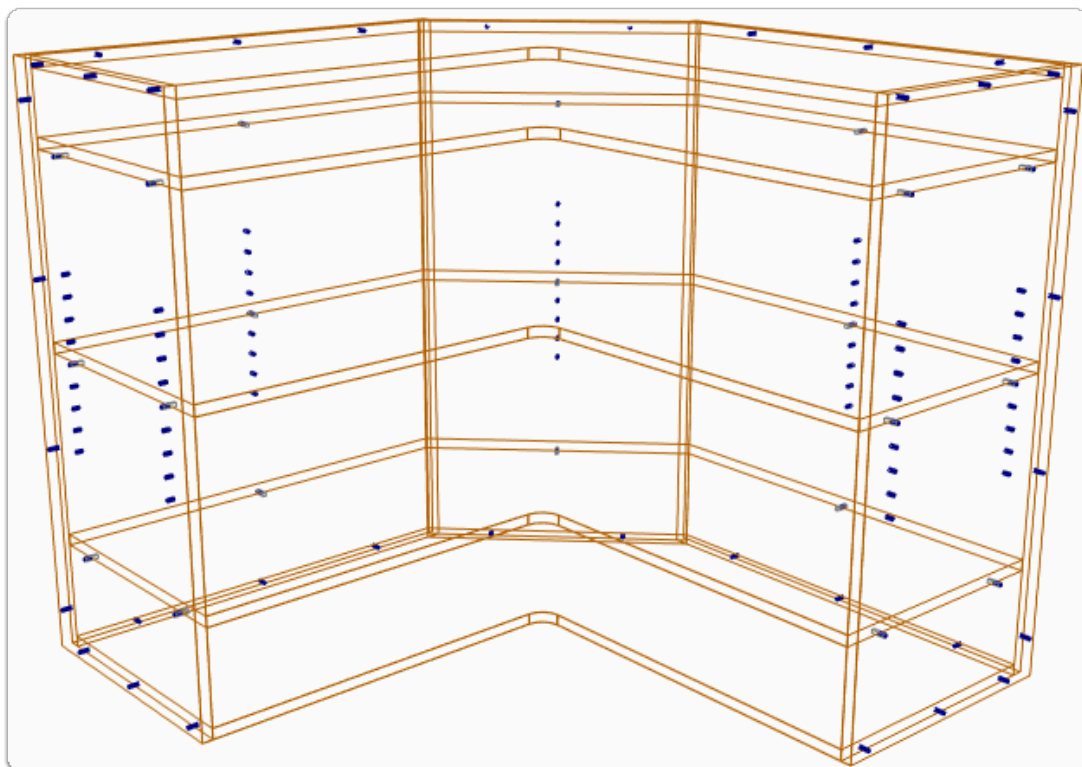
To use side bar attributes...

Assembly Level > Use one of the 'Orthographic Views' > Left click on the 'Adjustable Shelf (AS)'

Shelf Pin (Number or Holes per Pin)	0
Shelf Pin (Type)	Adjustable Pin
	Adjustable Pin
	Adjustable Pin Center of Shelf
	Adjustable Pin with Shelf Bore
	Adjustable Pin with Shelf Rebate
	Cam

Shelf Pin (Number of Holes per Pin)

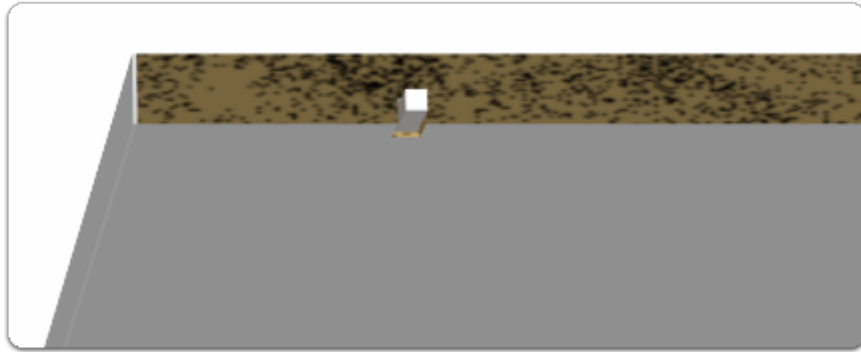
Enter any whole number here to override the number of holes drilled - In this example I've selected 1 hole on the top and bottom shelves and 9 holes on the center shelf.



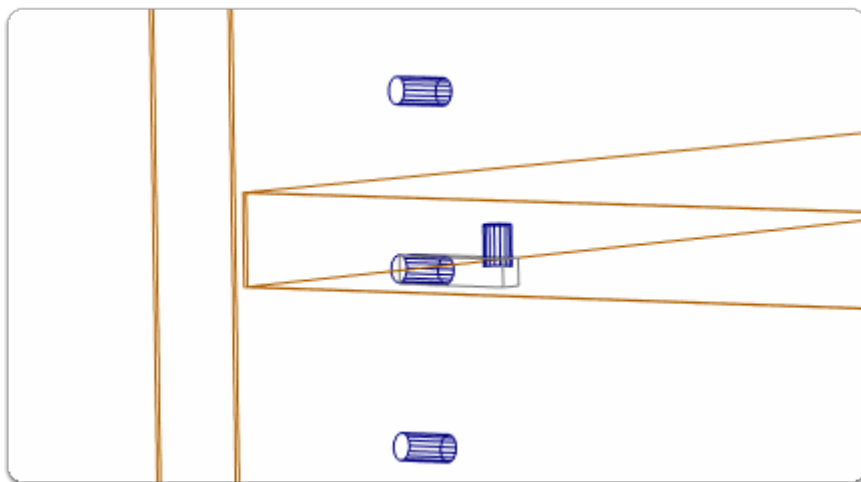
Shelf Pin (Type) - Adjustable Pin with Shelf Rebate

Apps to make Cabinet Vision work for you.

# Adjustable Shelf Pin Options - User Guide



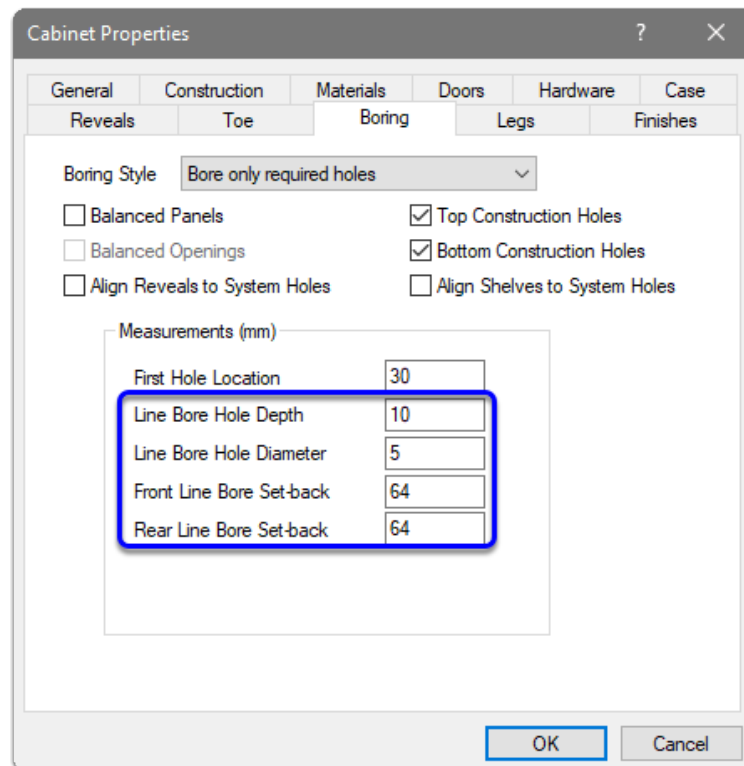
Shelf Pin (Type) - Adjustable Pin with Shelf Bore



Section > Properties > Boring - Go here for Hole diameter, depth and set-backs

Apps to make Cabinet Vision work for you.

# Adjustable Shelf Pin Options - User Guide



## Adding an Extra Shelf Support

Finally, lets take a look at adding and moving holes around the shelf - In this example I copy a Mid Line Bore and move it closer to the back corner of Corner 90 cabinet

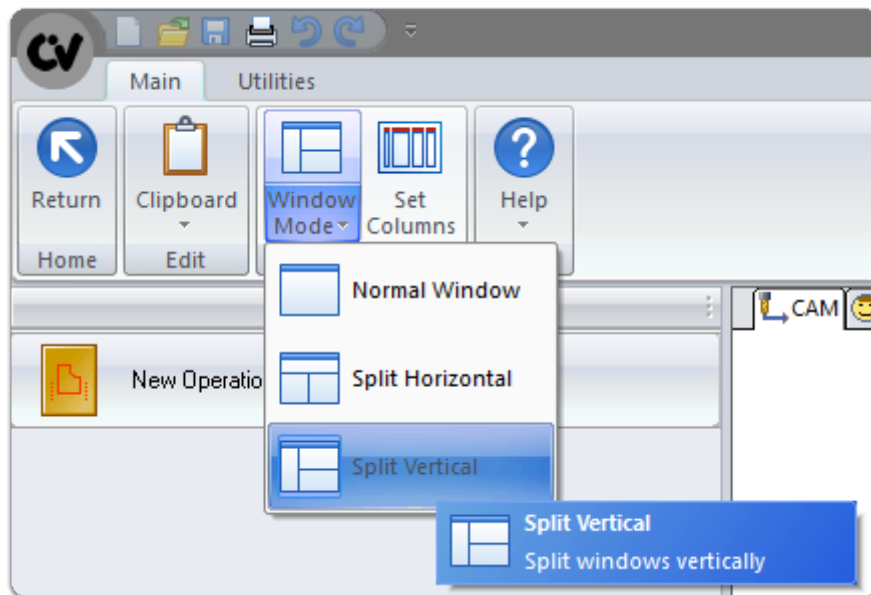
Note: You need Solid Advanced or Solid Ultimate to do this

Take the shelf to 'Part' level and for this sequence I recommend using 'Split Horizontal' or 'Split Vertical' view window mode



Apps to make Cabinet Vision work for you.

# Adjustable Shelf Pin Options - User Guide

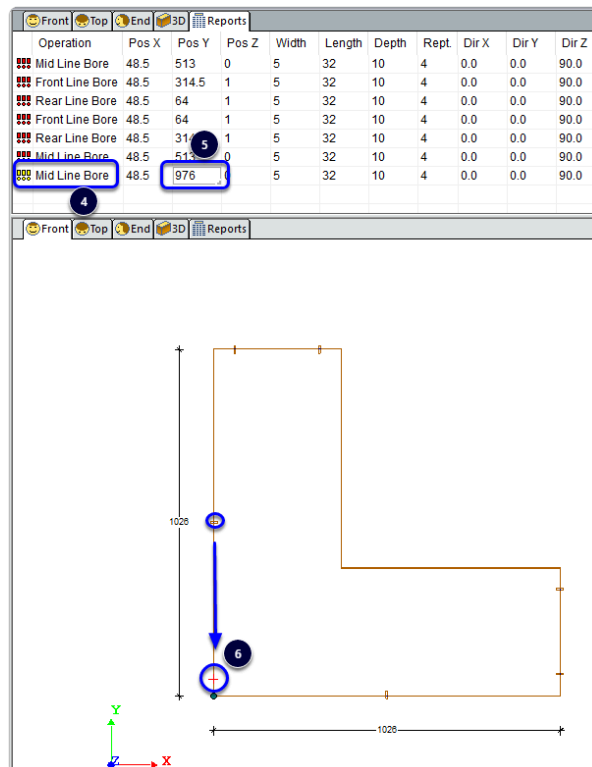
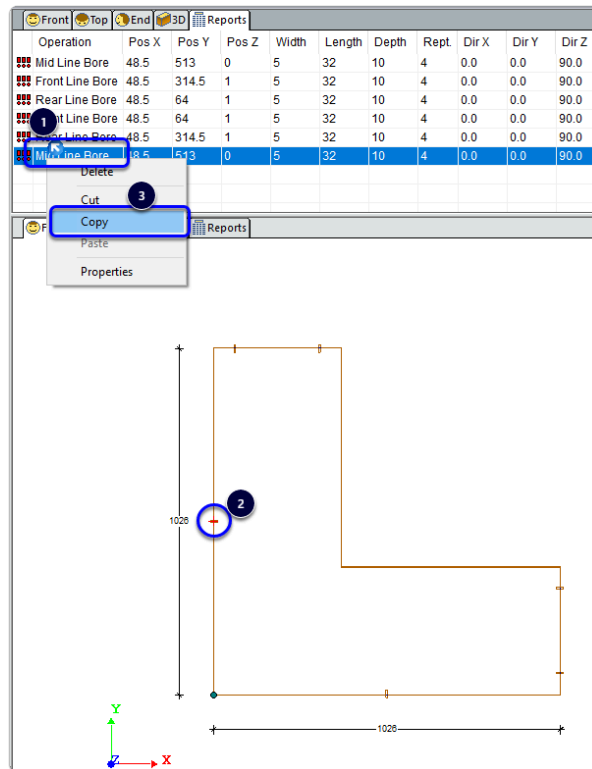


Using 'Front' and 'Report' views together

1. Select the operation
2. You get confirmation of the operation selected as it shows as red in the front view
3. Right Click and copy the operation > Paste using the Clipboard on the ribbon bar
4. Select the linebore we just created
5. The 'Pos Y' value is the distance along the edge in a clockwise direction from the corner
6. In my example I've entered 976 to place the linebore near the back corner

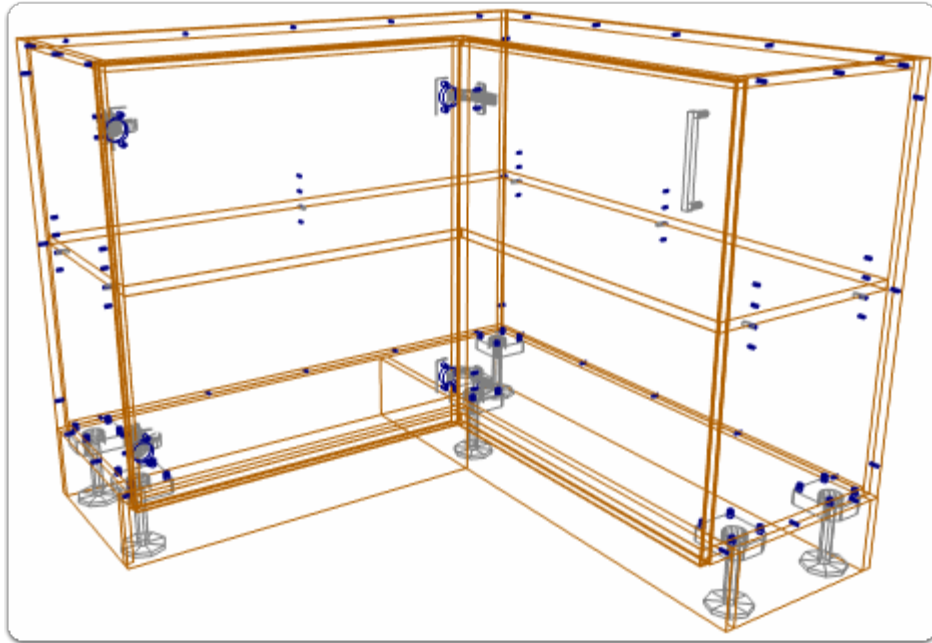
Apps to make Cabinet Vision work for you.

# Adjustable Shelf Pin Options - User Guide



Apps to make Cabinet Vision work for you.

# Adjustable Shelf Pin Options - User Guide



If you have feedback about this package, drop us an email to [theguys@cabinetvision.co.nz](mailto:theguys@cabinetvision.co.nz)