

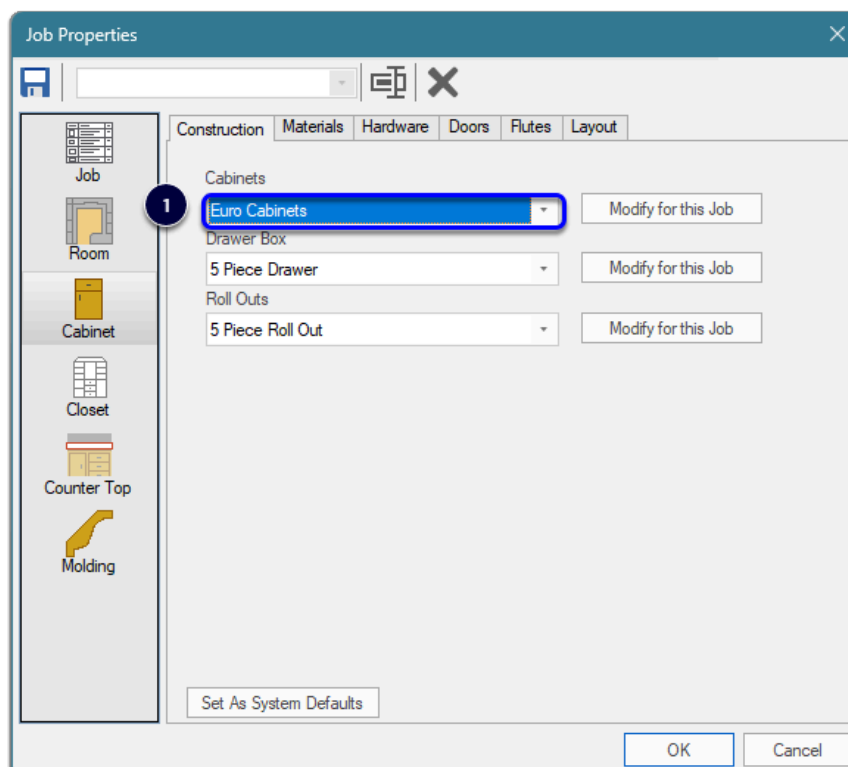
## Shadowline Channel and more - User Guide

### Contents of this Article...

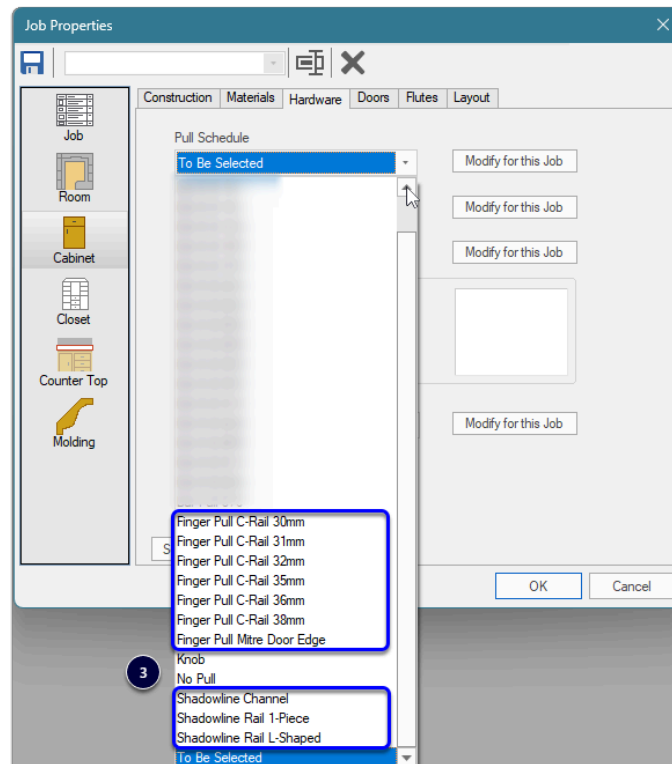
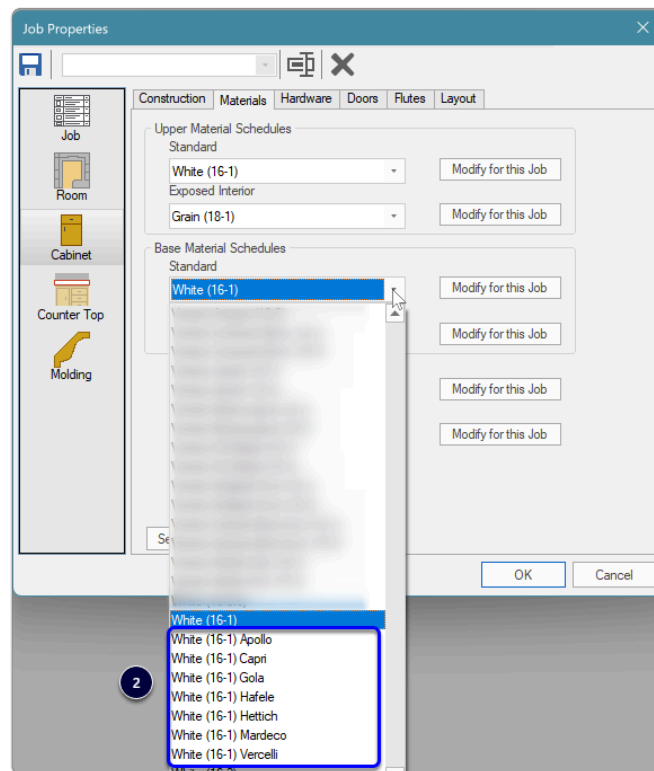
- Job Property Selections
- Assembly Construction Conditions
- Edit horizontal gap for different channel sizes
- Mid Shadowline - Replace C Channel with L Channel
- Edit horizontal gap for 1-Piece and L-Shaped rail

### Job Property Selections

1. Cabinet --> Construction - Euro Cabinets
2. Cabinet --> Materials --> Base Material Schedules --> Standard - [Valid Selections]
3. Cabinet --> Hardware --> Pull Schedule - [Valid Selections]



# Cabinet Vision Training - Shadowline Channel and more - User Guide



## Assembly Construction Conditions...

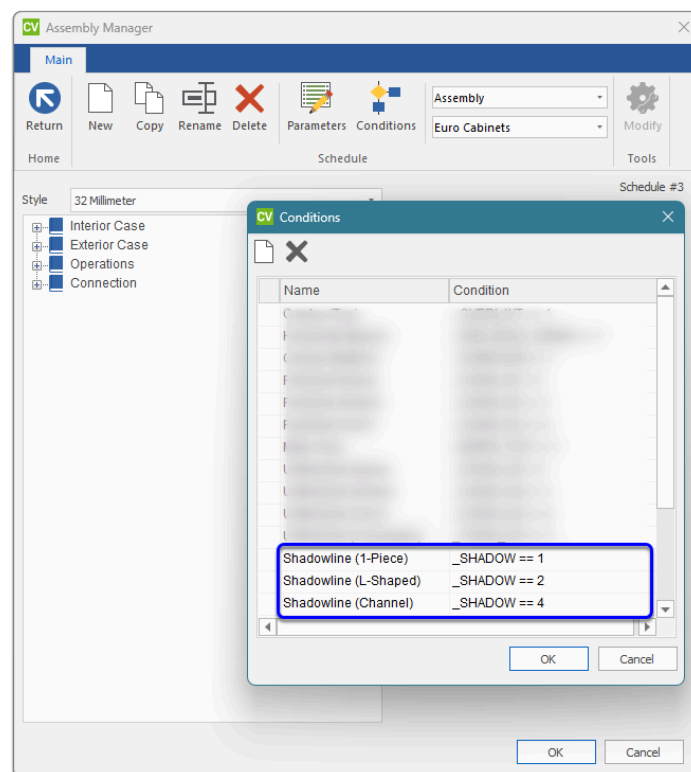
1. 1-Piece (\_SHADOW == 1)
2. L-Shaped (\_SHADOW == 2)

# Cabinet Vision Training - Shadowline Channel and more - User Guide

## 3. Channel (\_SHADOW == 4)

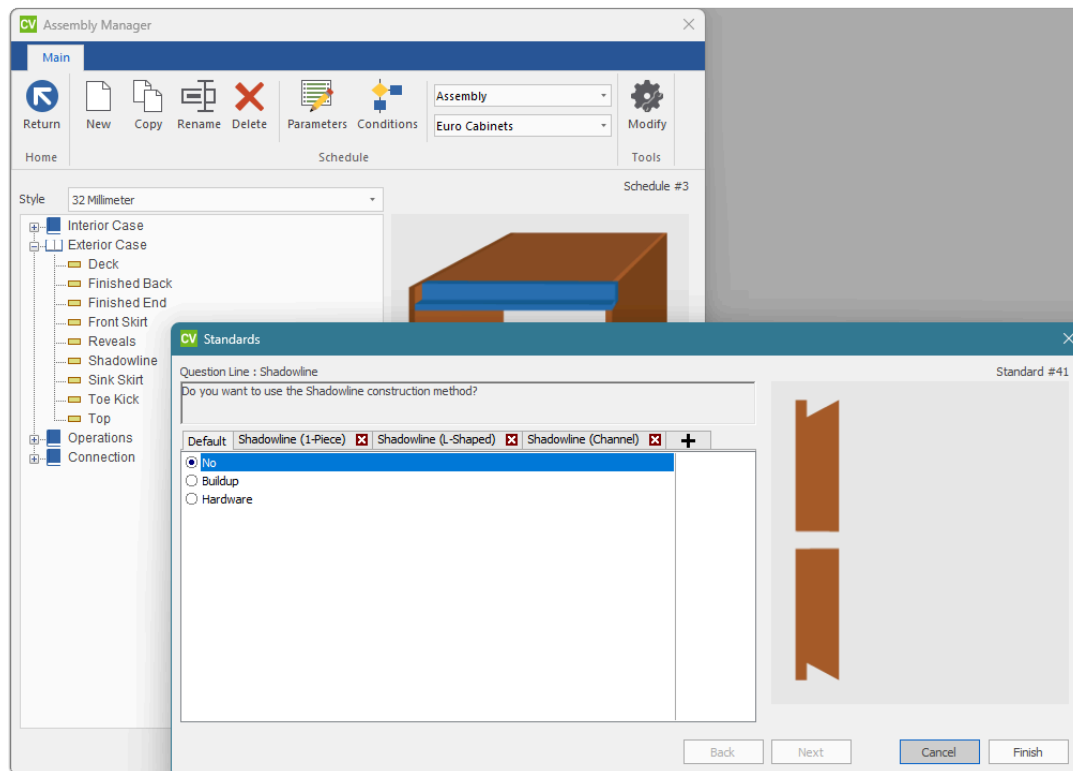
These conditions are applied to each cabinet by UCS based on the presence of a Pull from one of the valid Pull Schedules above - UCS checks for...

- Door Pull
- Drawer Front Pull
- False Front Pull



Assembly Manager automation - Decisions are then made appropriately

# Cabinet Vision Training - Shadowline Channel and more - User Guide



## Edit horizontal gap for Channel (globally or per job)

1. Door/drawer **top adjustment** from the horizontal Shadowline = Outer Channel size minus desired gap
2. Door/drawer **bottom adjustment** from the horizontal Shadowline = Mid Channel size minus Outer Channel size

In my example...

- Gap = 30mm  
Outer Channel size = 46mm  
Mid Channel size = 56mm
- Standard # nn130: Top adjustment (46mm - 30mm) = 16mm
- Standard # nn129: Bottom Adjustment (56mm - 46mm) = 10mm

# Cabinet Vision Training - Shadowline Channel and more - User Guide

**CV Standards** X

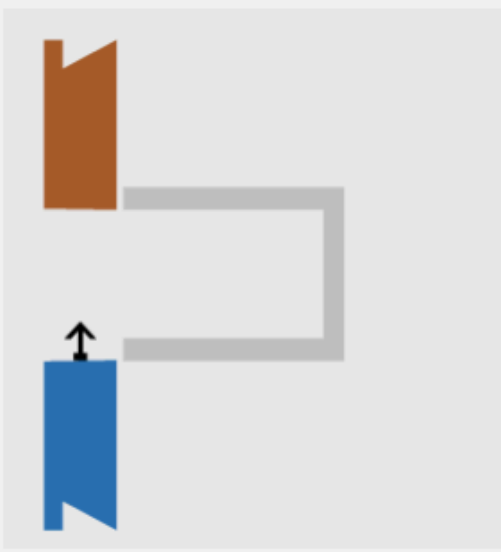
**1**

Question Line : Shadowline Standard #46130

Enter the door/drawer top adjustment from the horizontal Shadowline (Hardware)

Default Shadowline (Channel) ✖ +

<input checked="" type="radio"/> Top adjustment	16 mm
---	-------



Back Next Cancel Finish

**CV Standards** X

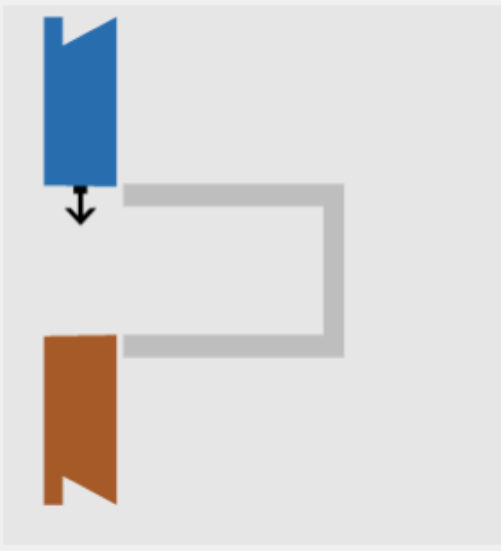
**2**

Question Line : Shadowline Standard #46129

Enter the door/drawer bottom adjustment from the horizontal Shadowline (Hardware)

Default Shadowline (Channel) ✖ +

<input checked="" type="radio"/> Bottom adjustment	10 mm
--	-------



Back Next Cancel Finish

## Mid Shadowline - Replace C Channel with L Channel

- Standard # nn129: Bottom adjustment = 0mm (or 1mm)

# Cabinet Vision Training - Shadowline Channel and more - User Guide

## Edit horizontal gap for Channel (globally or per job)

Note: Shadowline Rail and Edge can be swapped from L-Shaped to C-Shaped on the fly (Section View --> Properties --> Shadowline --> Edit for Doors or Drawers)

We will edit both C-Shaped and L-Shaped height and adjustments so both options respond as expected.

1. C-shaped Shadowline height
2. C-Shaped: Door/drawer **top adjustment** from the horizontal Shadowline = (C-shaped Shadowline Height minus desired gap)/2
3. C-Shaped: Door/drawer **bottom adjustment** from the horizontal Shadowline = (C-shaped Shadowline Height minus desired gap)/2
4. L-shaped Shadowline height
5. L-Shaped: Door/drawer **top adjustment** from the horizontal Shadowline = 0mm (or 1mm)
6. L-Shaped: Door/drawer **bottom adjustment** from the horizontal Shadowline = L-shaped Shadowline Height minus desired gap

In my example...

- Gap = 30mm
- Standard # nn046: C-shaped Shadowline height = 60mm
- Standard # nn086: C-shaped Top adjustment  $(60\text{mm} - 30\text{mm})/2 = 15\text{mm}$
- Standard # nn087: C-shaped Bottom Adjustment  $(60\text{mm} - 30\text{mm})/2 = 15\text{mm}$
- Standard # nn049: L-shaped Shadowline height = 45mm
- Standard # nn091: L-shaped Top adjustment = 0mm
- Standard # nn090: L-shaped Bottom Adjustment  $(45\text{mm} - 30\text{mm}) = 15\text{mm}$

# Cabinet Vision Training - Shadowline Channel and more - User Guide

CV Standards

1

Question Line : Shadowline

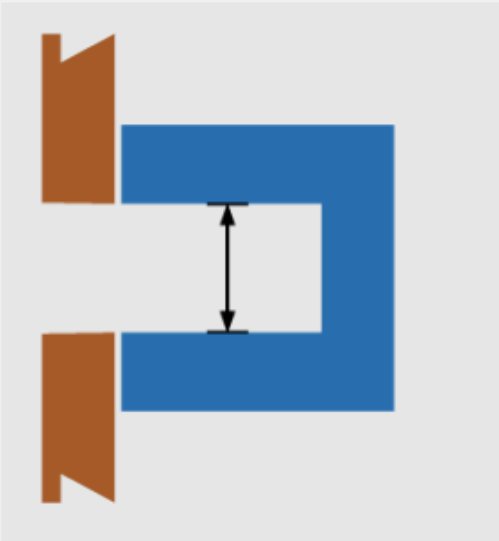
Standard #44047

Enter the C-shaped Shadowline height:

Default Shadowline (1-Piece) Shadowline (L-Shaped) +

Height

60 mm



Back

Next

Cancel

Finish

CV Standards

2

Question Line : Shadowline

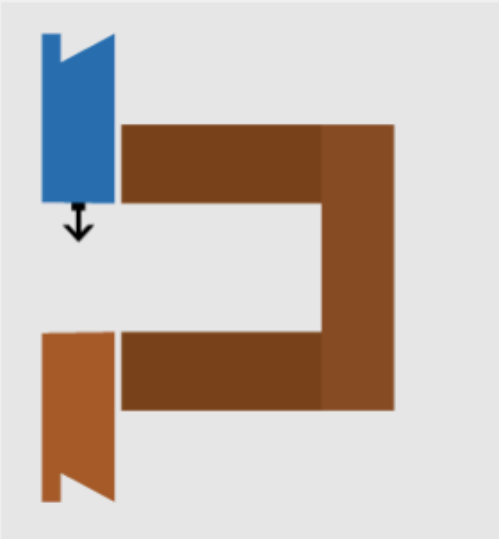
Standard #44086

Enter the door/drawer bottom adjustment from the horizontal C-shaped Shadowline

Default Shadowline (1-Piece) Shadowline (L-Shaped) +

Bottom adjustment

15 mm



Back

Next

Cancel

Finish

# Cabinet Vision Training - Shadowline Channel and more - User Guide

CV Standards

3

Question Line : Shadowline

Enter the door/drawer top adjustment from the horizontal C-shaped Shadowline

Standard #44087

Default Shadowline (1-Piece) Shadowline (L-Shaped) +

Top adjustment

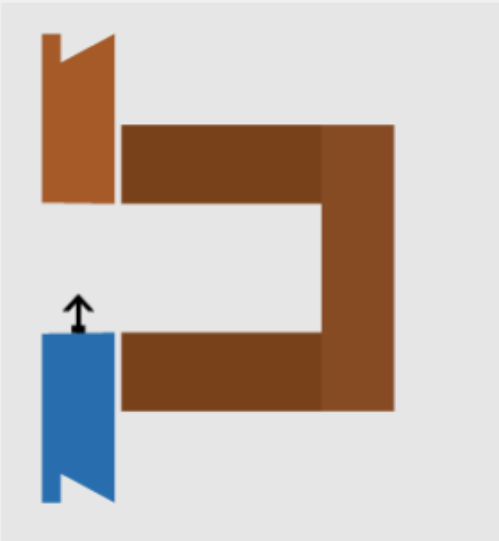
15 mm

Back

Next

Cancel

Finish



CV Standards

4

Question Line : Shadowline

Enter the L-shaped Shadowline height:

Standard #44049

Default Shadowline (1-Piece) Shadowline (L-Shaped) +

Height

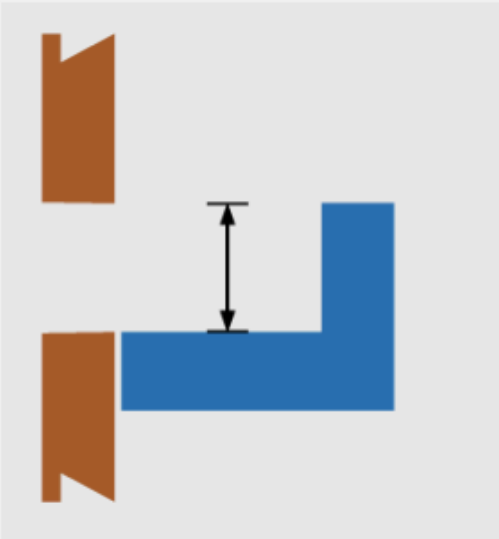
45 mm

Back

Next

Cancel

Finish



# Cabinet Vision Training - Shadowline Channel and more - User Guide

CV Standards

5

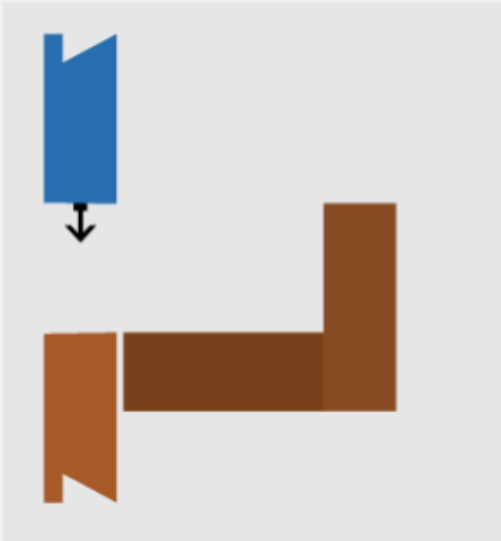
Question Line : Shadowline

Enter the door/drawer bottom adjustment from the horizontal L-shaped Shadowline

Default Shadowline (1-Piece) Shadowline (L-Shaped) +

Bottom adjustment

0 mm



Back

Next

Cancel

Finish

CV Standards

6

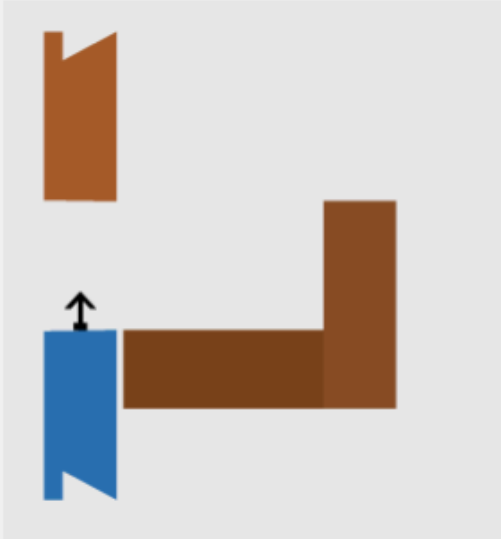
Question Line : Shadowline

Enter the door/drawer top adjustment from the horizontal L-shaped Shadowline

Default Shadowline (1-Piece) Shadowline (L-Shaped) +

Top adjustment

15 mm



Back

Next

Cancel

Finish