

Contents of this Article...

- Cabinet Level Attributes - Drawer Options
 - Equal Bottom Reference
 - Front Stabiliser Quantity
 - Front Stabiliser Type
 - Grain Match Drawer Bank (S2ME)
 - Guide Spacer Type
 - Number Drawer Fronts with Marker Hole
 - Grain Match Fronts (Door/Drawer etc - for Solid Advanced and a higher level than S2M Essential)

Equal Bottom Reference

- UCS checks the bottom reference of the bottom drawer (Cabinet must have a drawer at the bottom of the cabinet)
- As the name suggests, the other drawers bottom clearance increases automatically so that the reference to the first hole is the same
- Great for when you order doors in and the guys in the factory wish to use a drill press for drilling fronts

CV App Store Drawer Standards - User Guide



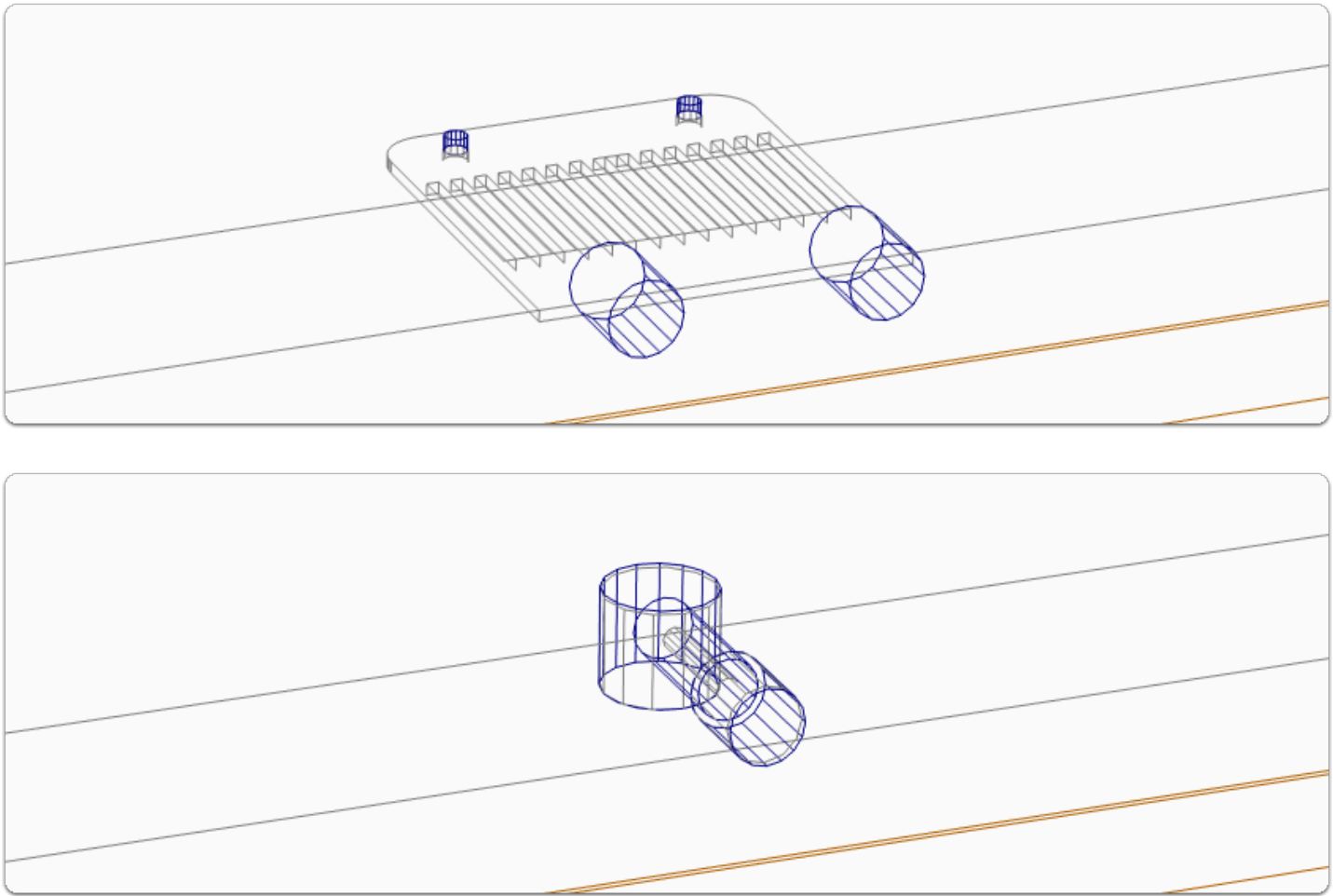
- If you create a drawer unit where the assembly is over 700mm wide, you'll get 1 front stabiliser
- Use the 'Front Stabiliser Qty' attribute to override the number
- Use the 'Front Stabiliser Type' attribute to switch between Blum and Grass front stabilisers

Drawer (Options)	-- Menu Open --
Drawer - Equal Bottom Reference	False
Drawer - Front Stabiliser Qty	1
Drawer - Front Stabiliser Type	Blum Z96
Drawer - Guide Spacer Type	Blum Z96
Drawer - Number Drawer Fronts	Grass Connector
Front Top (Additional)	None

User Created Standards

User Created Standard	Order	Part	Description
Joinery IT System UCS			Apps to make Cabinet Vision work for you.
Dwr-System-1 (Cab)	98	Casing	CV11-Joinery IT Drawer System - (1 of 8)
Dwr-System-2 (Guide Rail)	99	Drawer	CV11-Joinery IT Drawer System - (2 of 8)
Dwr-System-3 (Opening)	100	Drawer Guide	CV11-Joinery IT Drawer System - (3 of 8)
Dwr-System-4 (ROG)	101	Hardware Connector	CV11-Joinery IT Drawer System - (4 of 8)

CV App Store Drawer Standards - User Guide



Grain Match Drawer Bank (for S2M Essential only)

- Activate this grain match option to replace all lower drawer fronts with a single slab
- Top drawer front is extended down
- Routes are added to split the single panel back up on the nest
- Front Clip, Stabiliser and Pull operations Y position is adjusted to suit cutter width

User Created Standard	Order	Part	Description
Joinery IT System UCS			
Dwr-System-1 (Cab)	98	Casing	CV11-Joinery IT Drawer System - (1 of 8)
Dwr-System-2 (Casing)	99	Drawer Guide	CV11-Joinery IT Drawer System - (2 of 8)
Dwr-System-3 (Opening)	100	Drawer Guide	CV11-Joinery IT Drawer System - (3 of 8)
Dwr-System-4 (ROG)	101	Hardware Connector	CV11-Joinery IT Drawer System - (4 of 8)

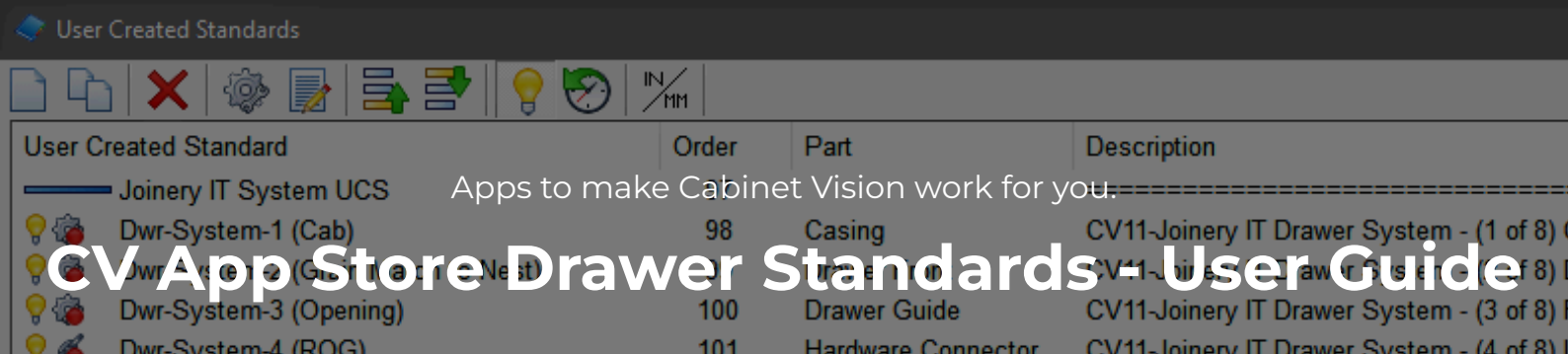


Special Notes:

- From **Solid Advanced** plus **S2M Standard** you are able to group original fronts on a single cabinet
- From **Solid Ultimate** plus **S2M Standard** you are able to include fronts from adjacent cabinets into the group as well

CV App Store Drawer Standards - User Guide





Apps to make Cabinet Vision work for you.

CV App Store Drawer Standards - User Guide

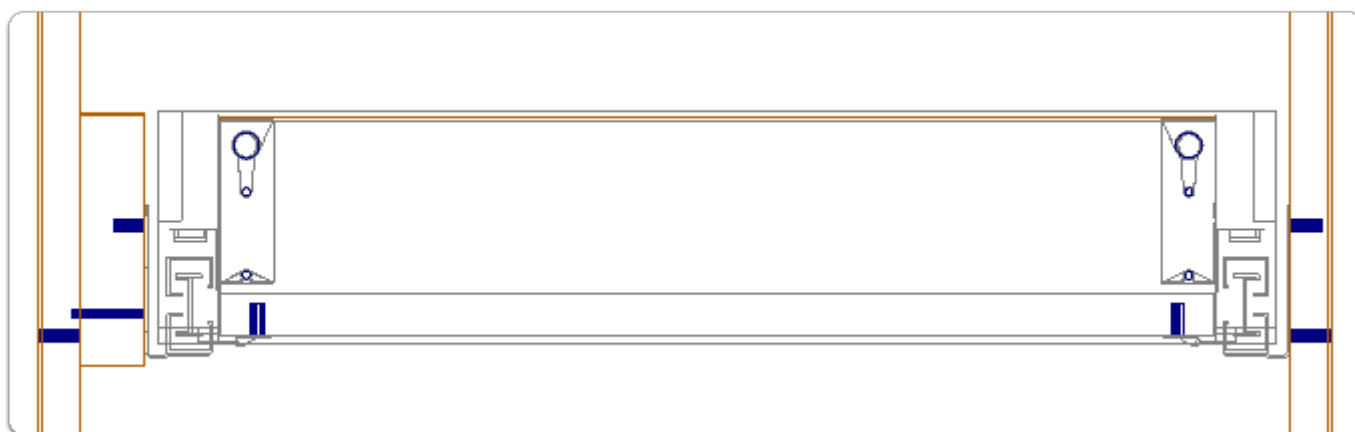
Guide Spacer Bars and Blocks

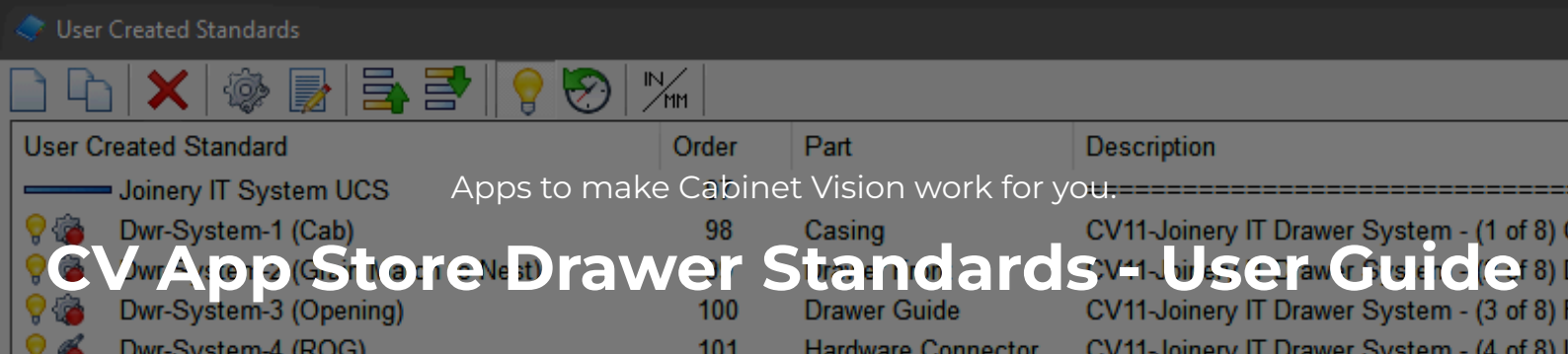
- Hafele 25mm Spacer Bar
- Hafele 25mm Spacer
- Wooden Spacer Block using GU-Gusset part (shown here as 25mm white panel edge banded top and front)

Drawer (Options)	-- Menu Open --
Drawer - Equal Bottom Reference	False
Drawer - Front Stabiliser Qty	1
Drawer - Front Stabiliser Type	Blum Z96
Drawer - Guide Spacer Type	Hafele Spacer Bar
Drawer - Number Drawer Fronts	Hafele Spacer
Front Top (Adjust Length)	Hafele Spacer Bar
Front Top (Adjust Position)	None
	Wooden Spacer Block

Part - Part Category	Assigned Material
Assembly	TE White 16mm
Hanging Rail	Hanging Rail
Banding	1 x 21 White Band
Case	TE White 16mm
Exposed	TE White 16mm
Interior	TE White 16mm
Adjustable Glass Shelf	6mm Glass
Adjustable Shelf	TE White 16mm
Bottom	TE White 16mm
Clipped Back Support	TE White 16mm
Deck	TE White 16mm
Divider	TE White 16mm
Drawer Stretcher	TE White 16mm
Fixed Shelf	TE White 16mm
Gusset	TE White 25mm
Horizontal Divider	TE White 16mm
Left Sub End	TE White 16mm

CV App Store Drawer Standards - User Guide



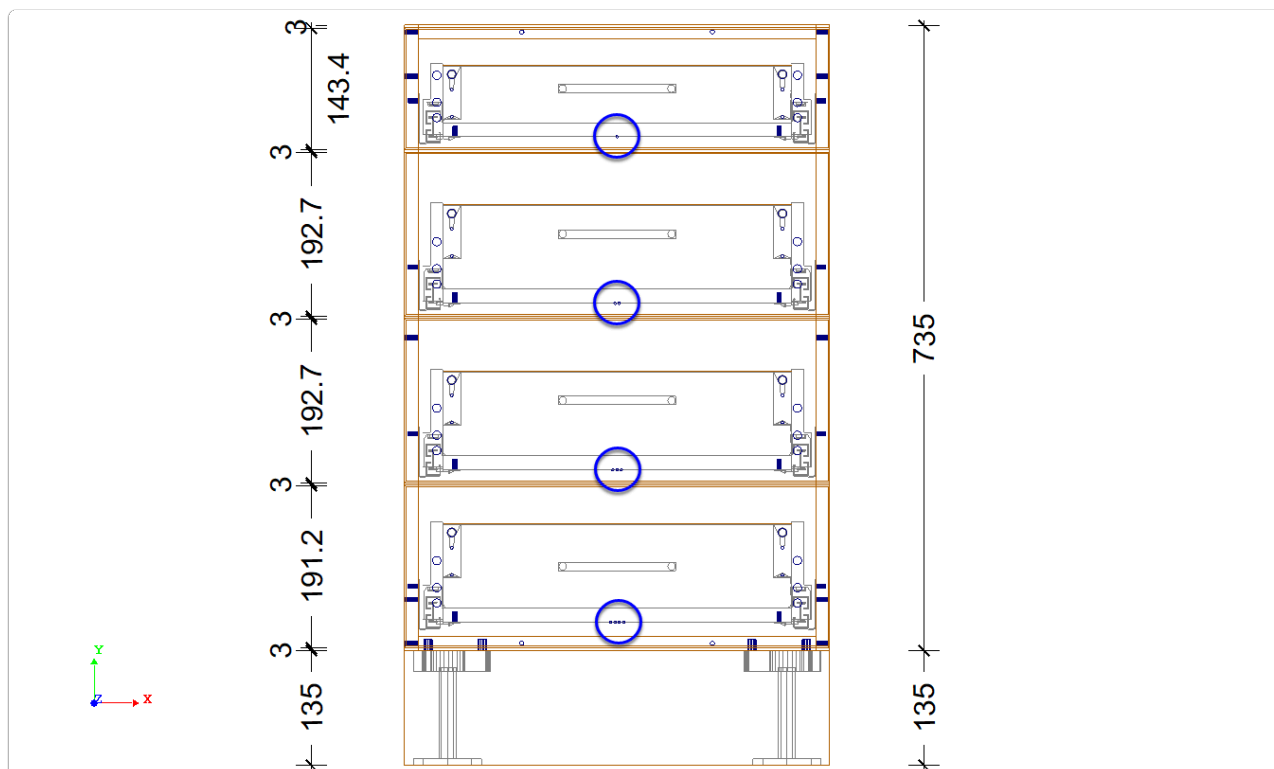


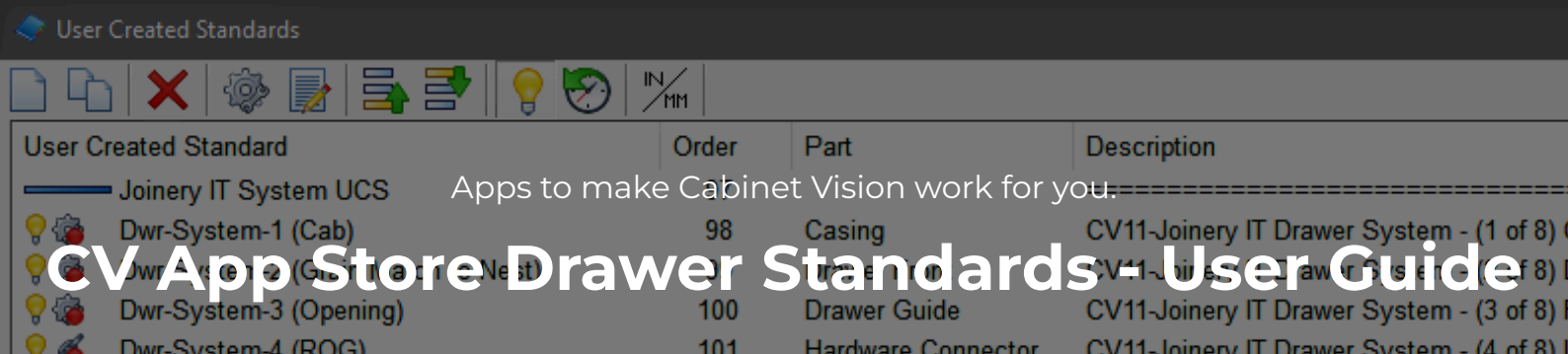
Note: The The Roll Out Clearance in the Material Schedule needs to match the Spacer Block material thickness and it will be used...

		Material	Hinge	Finishes	Finish Types	Textures						
ID	Name	Type	Horizo...	Vertic...	Door End To Hinge	Inset	Maximum Spacing	Opening Angle	Door Edge To Reference Point	Roll Out Clearance		
1820	Blum 95° Blind (Inserta Cliptop)	Concealed	15.5	15.5	100	-2	700	95.000	22	0		
1821	Blum 45° (Inserta Cliptop)	Concealed	15.5	15.5	100	-7	700	95.000	22	0		
1822	Blum 110° (Inserta Cliptop)	Concealed	0	0	100	-2	700	110.000	22	25		
1823	Blum 107° Inset (Inserta Cliptop)	Concealed	0	0	100	20	700	110.000	22	25		
1825	Blum 170° (Inserta Cliptop)	Concealed	15.5	15.5	100	-2	700	175.000	22	0		
1930	Blum 155° Zero Protrusion (Inserta Cliptop)	Concealed	15.5	15.5	100	-2	700	175.000	22	0		

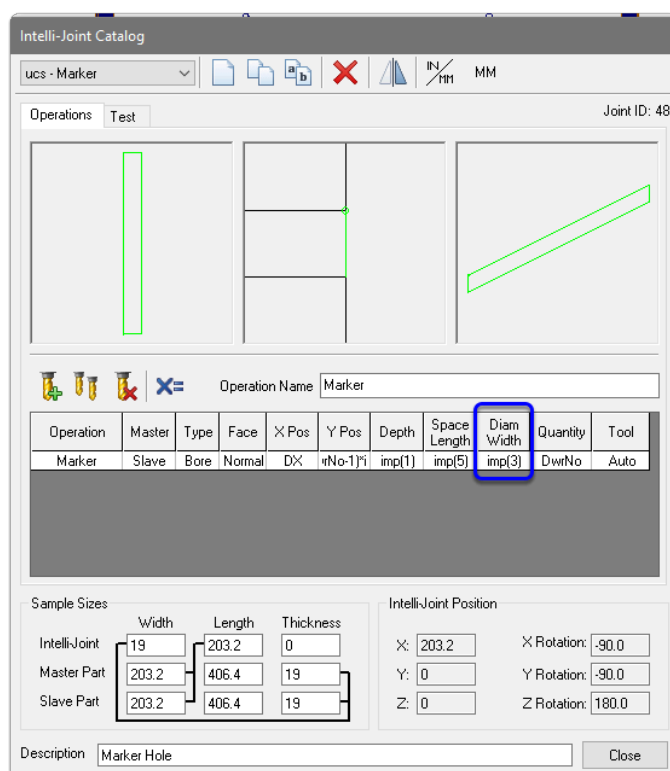
Number Drawer Fronts with Marker Hole

- Marks drawer fronts so that grain matches can be assembled again easily
- Also useful if drawers are to be slightly different sizes
- Marks are still visible, underneath, after the front is connected to the drawer





💡 The marker diameter default is 3mm - Edit 'ucs - Marker' in the Intelli-Joint Catalog to edit the drill diameter



Grain Match Fronts - Solid Advanced only

- Activate to have single assemblies grain matched
- Not limited to drawer banks
- If you Doors and Drawer Fronts are grained, they will group together during the nest optimisation

Note: If you have Solid Ultimate, grain matching can be performed in Elevation View > Grain Match (Side Bar) > Right Click the Assembly > Create Group

- And with Solid Ultimate other adjacent assemblies can be added to the group