

Shadowline Channel and more - Import Guide

Contents of this Article...


- Alert - Start with a backup
- Extract the download
- Open Setup Package Utility and import the package

Before you get started is a great time to back up your Cabinet Vision files...

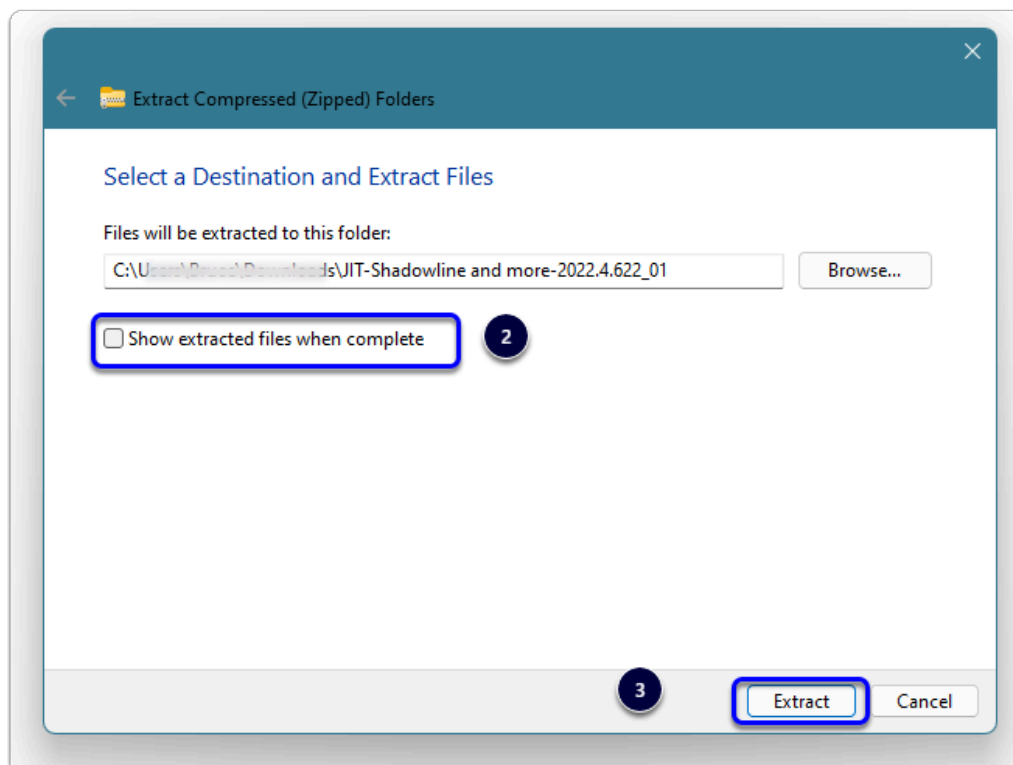
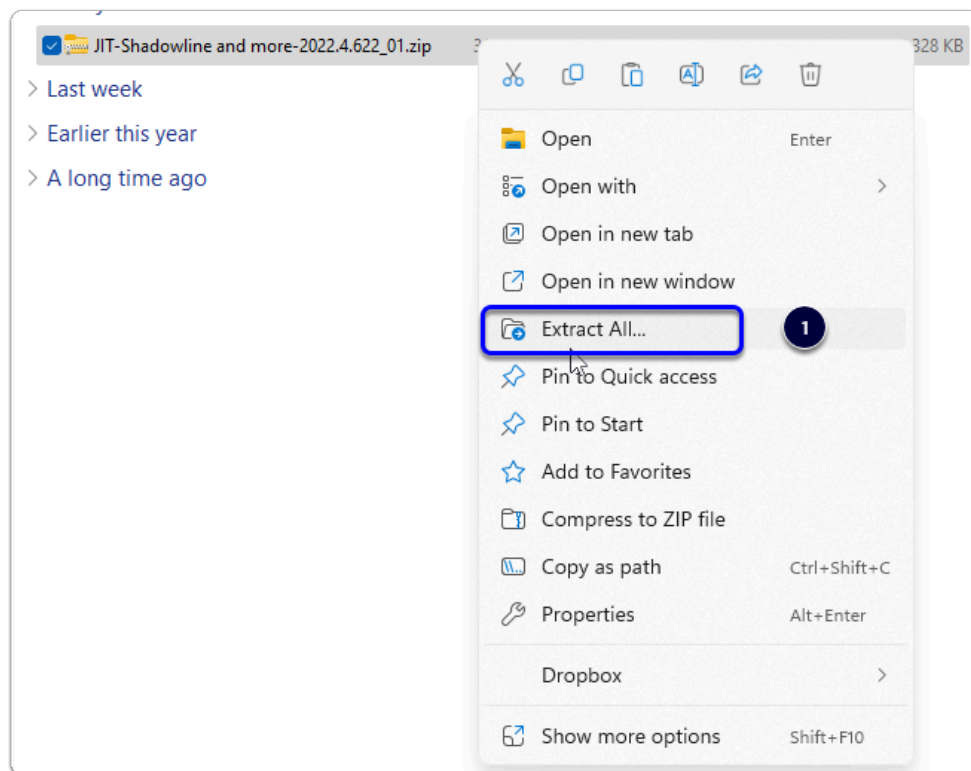
- If something doesn't go exactly to plan you'll be able to start over
- Take a look at our ScreenSteps on the [Backup Utility](#)

Extract the Download

1. Right click > Extract All
2. Un-check "Show extracted files when complete"
3. Extract

 An easy way is to place a copy of the zip file into your job folder > Right Click and 'Extract All'

Cabinet Vision Training - Shadowline Channel and more - Import Guide

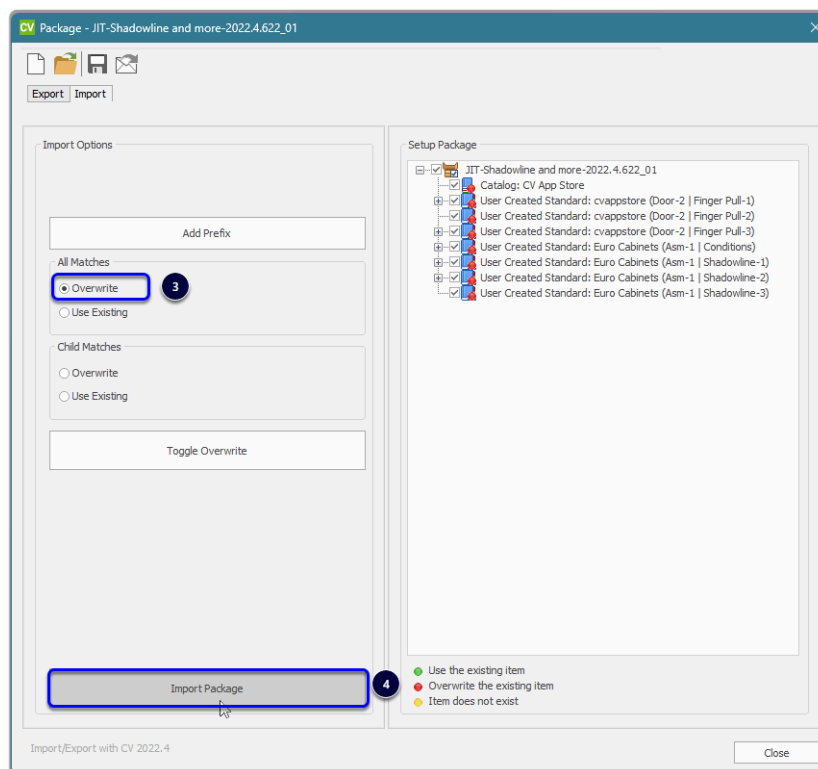
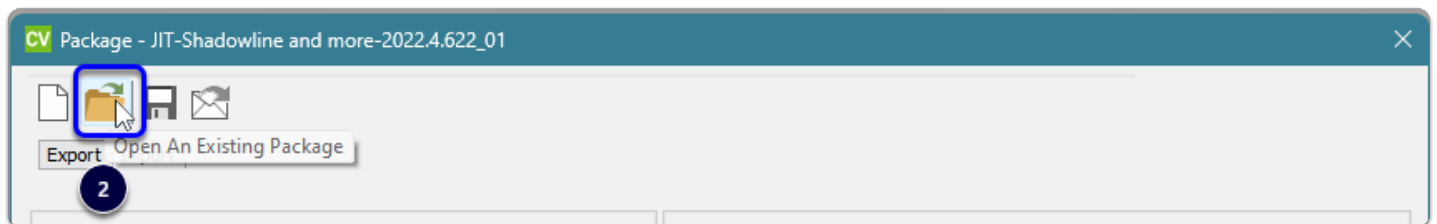
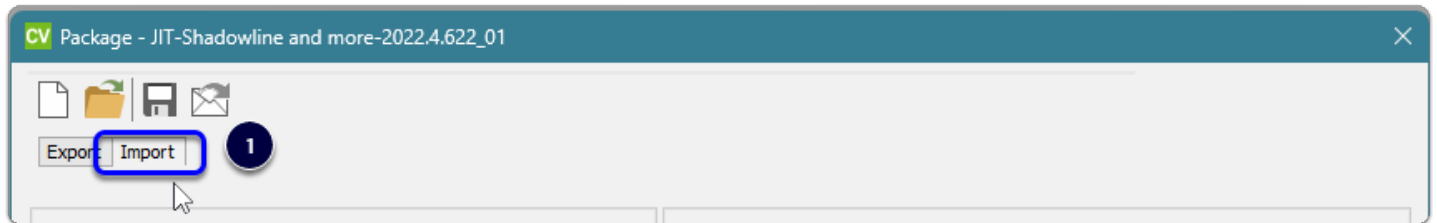


Open Setup Package Utility and import the package

- We're ready to import the package into Cabinet Vision > Splash Screen > Utilities > Setup Utility

Cabinet Vision Training - Shadowline Channel and more - Import Guide

1. Select the "Import" tab
2. Open An Existing Package
3. Overwrite all Matches (If any)
4. Import Package and click OK



Import Complete - You're nearly done - Time to test things out...