

# Hafele AXILO Plinth System - User Guide

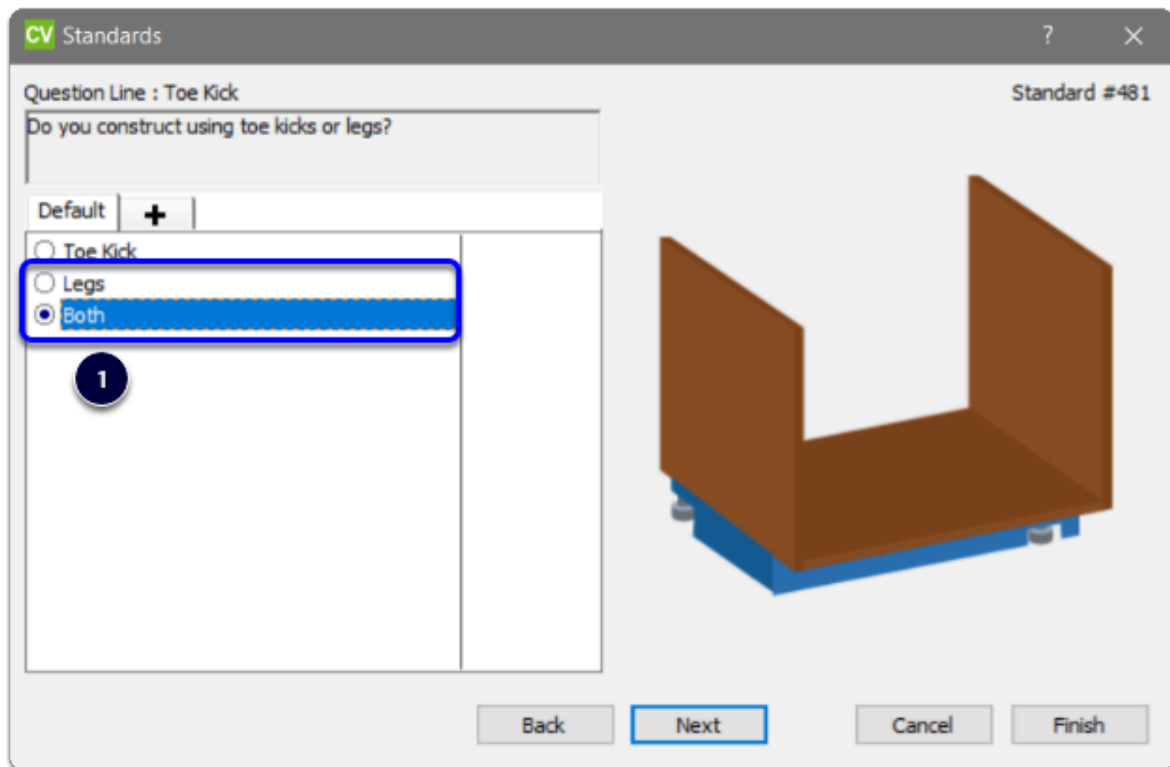
## 💡 Contents of this Article...

- **Construction Settings**
- **Assembly Schedule**
- **Position Logic**
- **Height Logic**
- **Preview**

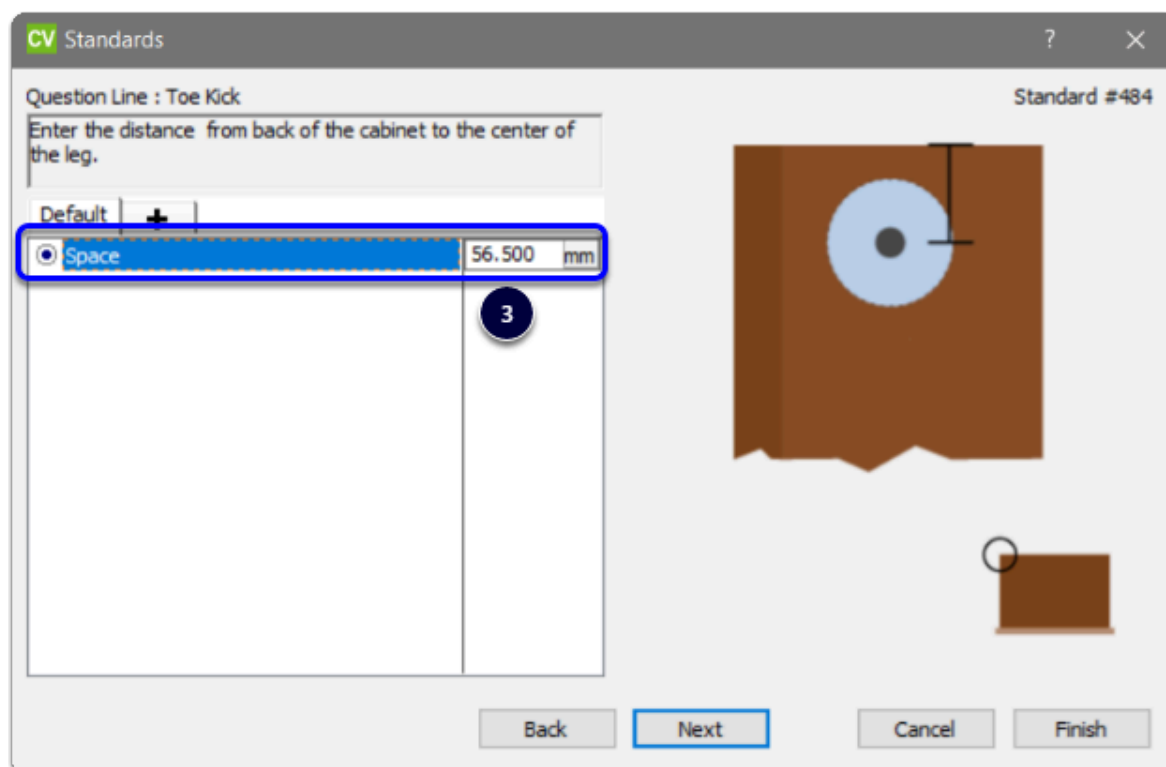
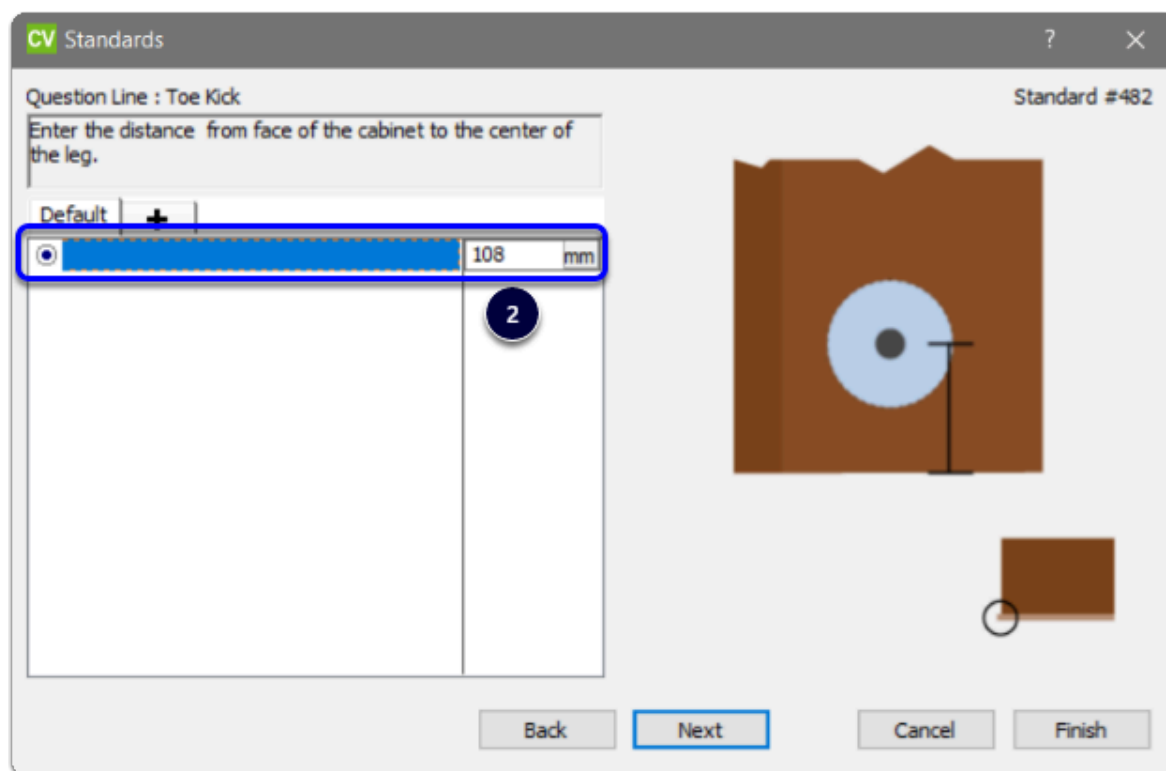
## Construction Settings

Allow the use of, and check that you have appropriate distances set in the construction method for your feet

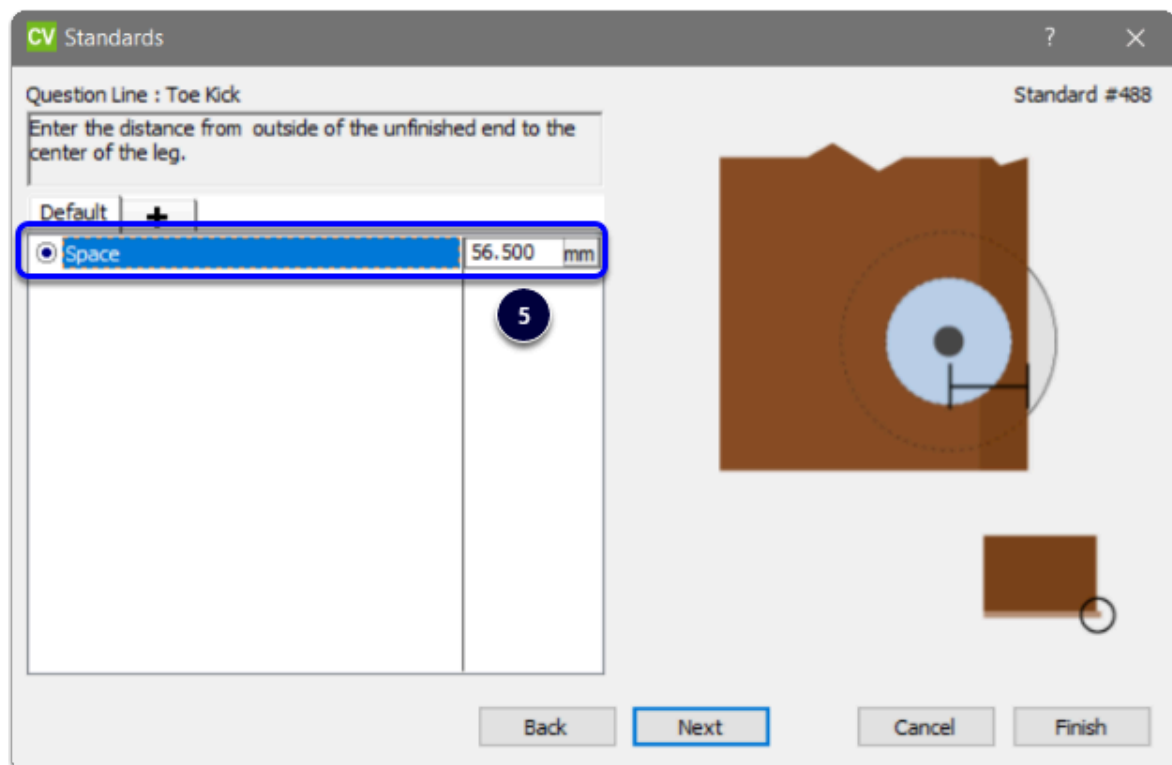
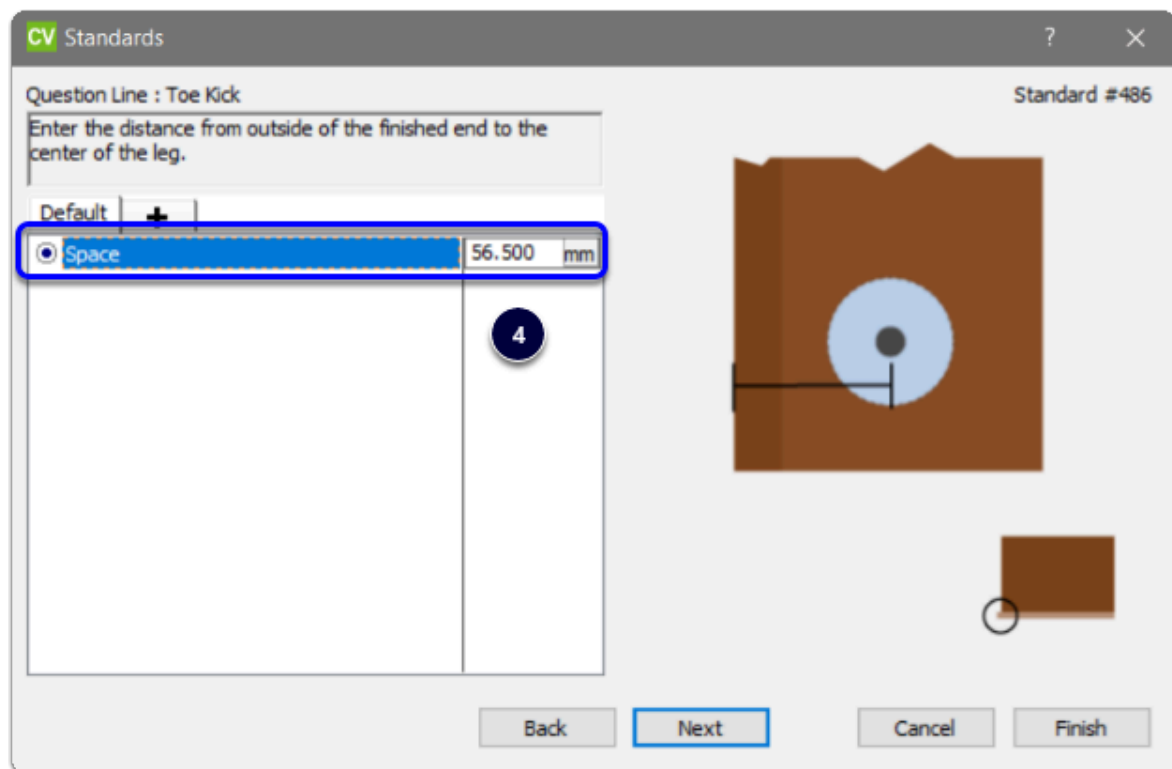
1. Standard #481 - Check 'Legs' or 'Both'
2. Standard #482 - Distance from face of cabinet to center of leg
3. Standard #484 - Distance from back of cabinet to center of leg
4. Standard #486 - Distance from finished end of cabinet to center of leg
5. Standard #488 - Distance from unfinished end of cabinet to center of leg



# Cabinet Vision Training - Hafele AXILO Plinth System - User Guide



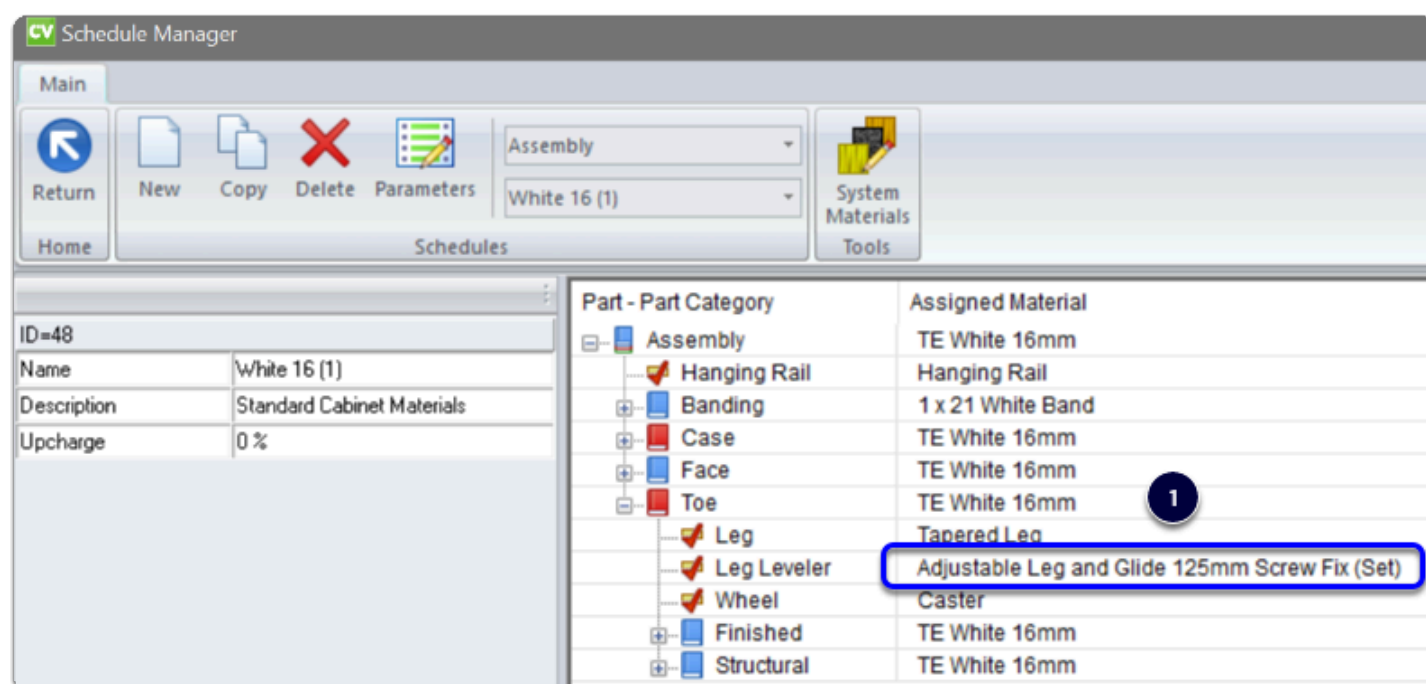
# Cabinet Vision Training - Hafele AXILO Plinth System - User Guide



## Schedule Manager > Assembly Schedule

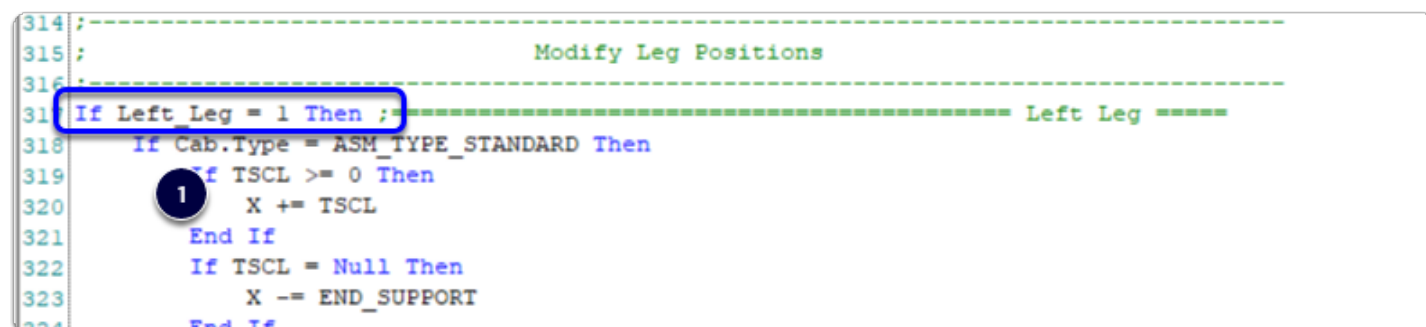
### 1. Select the most popular size in your Assembly Schedules

# Cabinet Vision Training - Hafele AXILO Plinth System - User Guide



## Feet Position Logic

1. Parameters are used to assist the UCS in making position movement
2. In general most legs will realise the correct parameters, however, if required to you can adjust these attributes on the side bar
3. When Parameters correctly indicate the legs position within the cabinet, Cabinet Vision positions legs as expected behind the Toe Faces
4. Use Section Editor > Cabinet Properties > Toe, to make plinth size adjustments

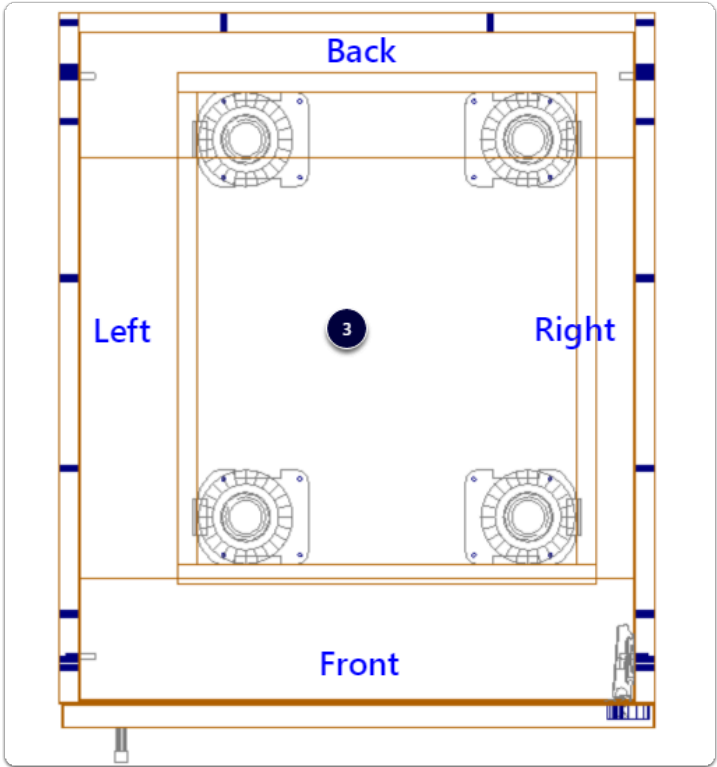


# Cabinet Vision Training - Hafele AXILO Plinth System - User Guide

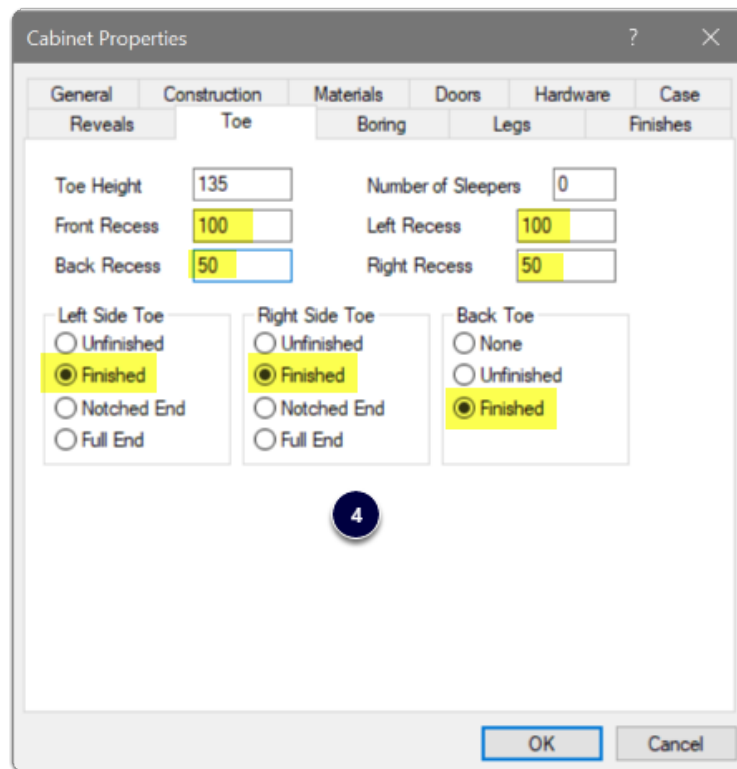
Attributes

|                       |                   |
|-----------------------|-------------------|
| Adjust Part (Options) | -- Menu Closed -- |
| Back Leg              | False             |
| Center Leg            | False             |
| Front Leg             | True              |
| Left End              | True              |
| Material (MatID)      | 2842              |
| Right End             | False             |

2



# Cabinet Vision Training - Hafele AXILO Plinth System - User Guide



## Feet Height Logic

- The UCS will substitute materials as required so the order is correct for respective plinth heights

