

Shadowline Channel and more - Post Import

💡 Contents of this Article...

- UCS Public Variable Defaults
- Part Manager Settings
- Add Conditions into Assembly Construction
- Create your Shadowline Rules (Example below for 2-Piece L-Shaped Rail)

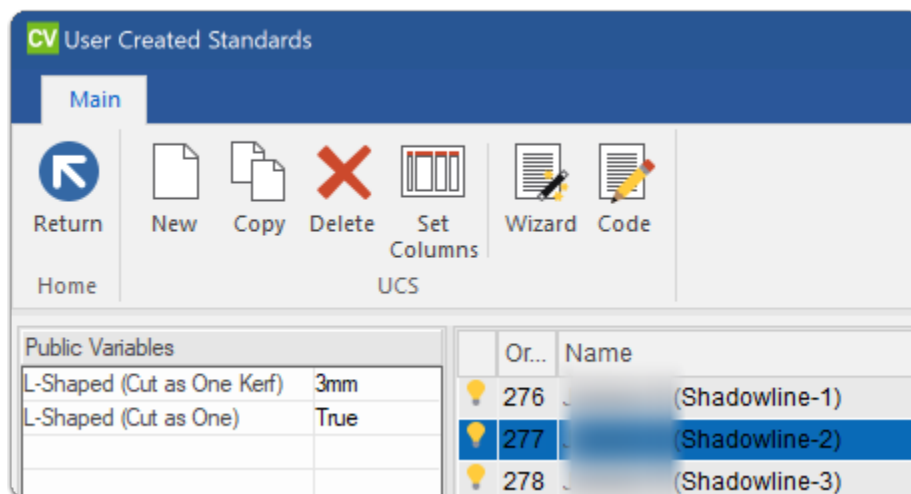
⚠️ PLEASE NOTE: Some setup steps are optional...

Before adding conditional branches into your existing assembly construction method we recommend using the Euro Cabinets assembly method (included in the package) to test things out. IE: Ultimately, including conditions into your own assembly construction method is optional.

- Using 'Euro Cabinets' for initial testing you get to see Shadowlines working straight away
- Your choice: It may be easier to modify the Euro Cabinets method to suit your needs

UCS Public Variable Defaults

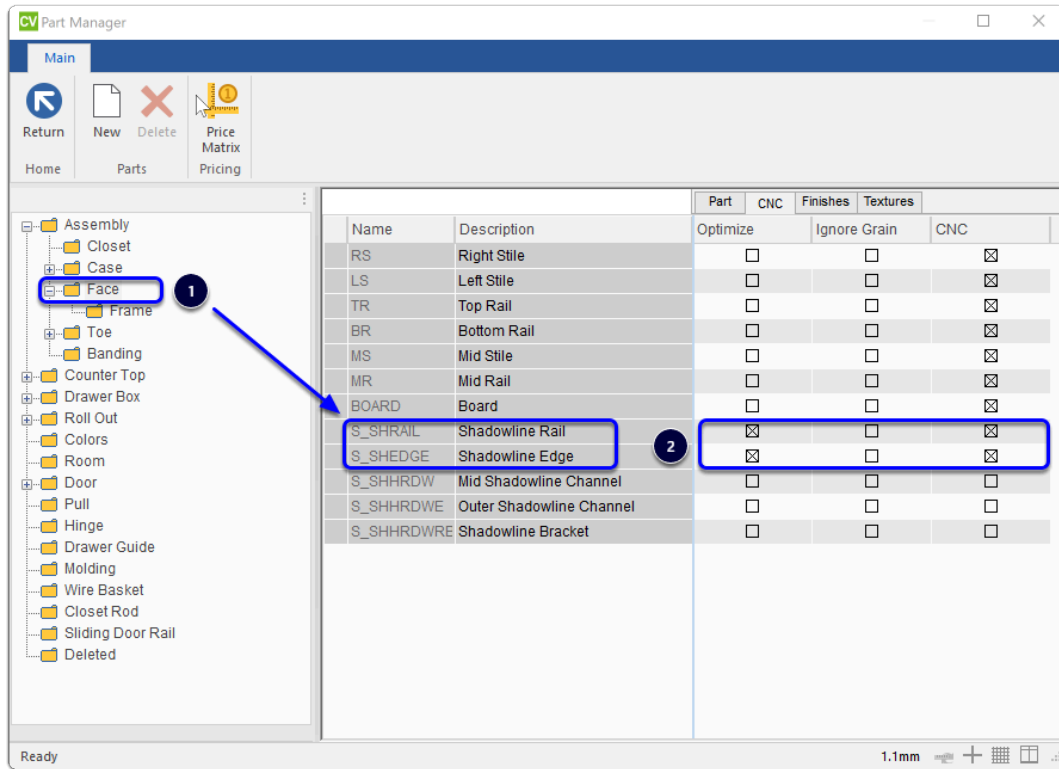
1. L-Shaped (Cut as One Kerf) - Saw blade thickness for re-cut
2. L-Shaped (Cut as One) - True/False



Part Manager

Cabinet Vision Training - Shadowline Channel and more - Post Import

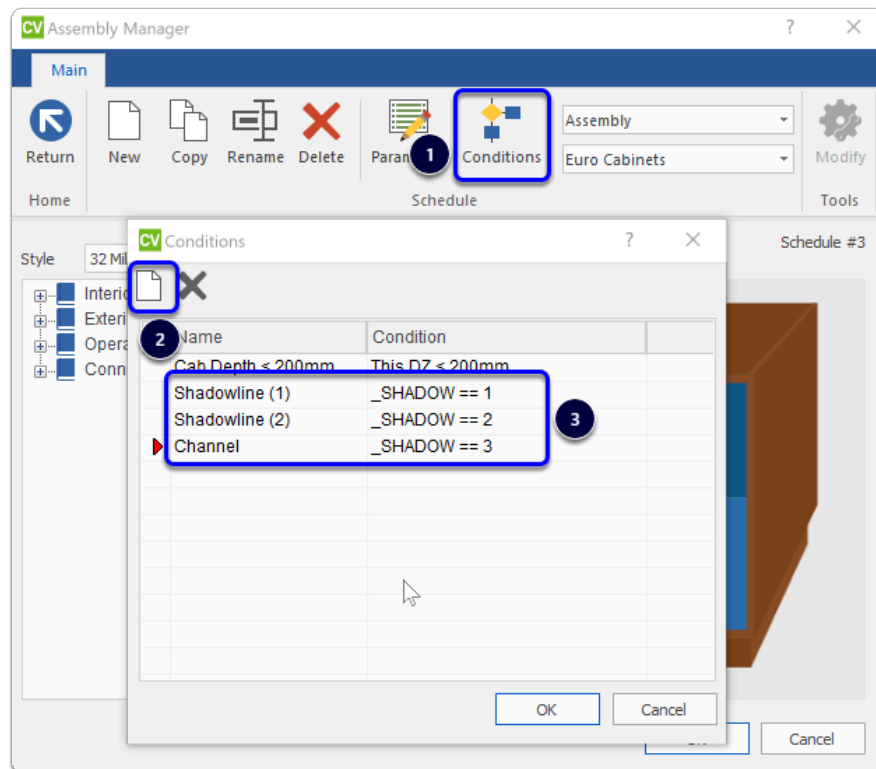
1. Locate "Shadowline Edge" and "Shadowline Rail" Parts in the Material Manager
2. CNC Tab > Check the box for "Optimize" and "CNC" if you wish to cut these parts on the nest with other parts in your job



Add Conditions into Assembly Construction

- Our UCS will add the _SHADOW parameter to base cabinets according to the selection made in the Pull Schedule
 - Add _SHADOW values appropriate for your needs into the Conditions area of the Assembly Manager
1. Open the Assembly Manager > Click on Conditions
 2. Click New
 3. Enter _SHADOW values for use in the Assembly Construction
 1. Shadowline (1) - _SHADOW == 1 > One-Piece Shadowline Rail
 2. Shadowline (2) - _SHADOW == 2 > L-Shaped Shadowline Rail
 3. Shadowline (3) - _SHADOW == 3 > C-Shaped Shadowline Rail
 4. Channel - _SHADOW == 4 > Shadowline Channel (Uses material sizes from materials assigned to Outer and Middle Shadowline Channel parts in the Assembly Material Schedule)

Cabinet Vision Training - Shadowline Channel and more - Post Import



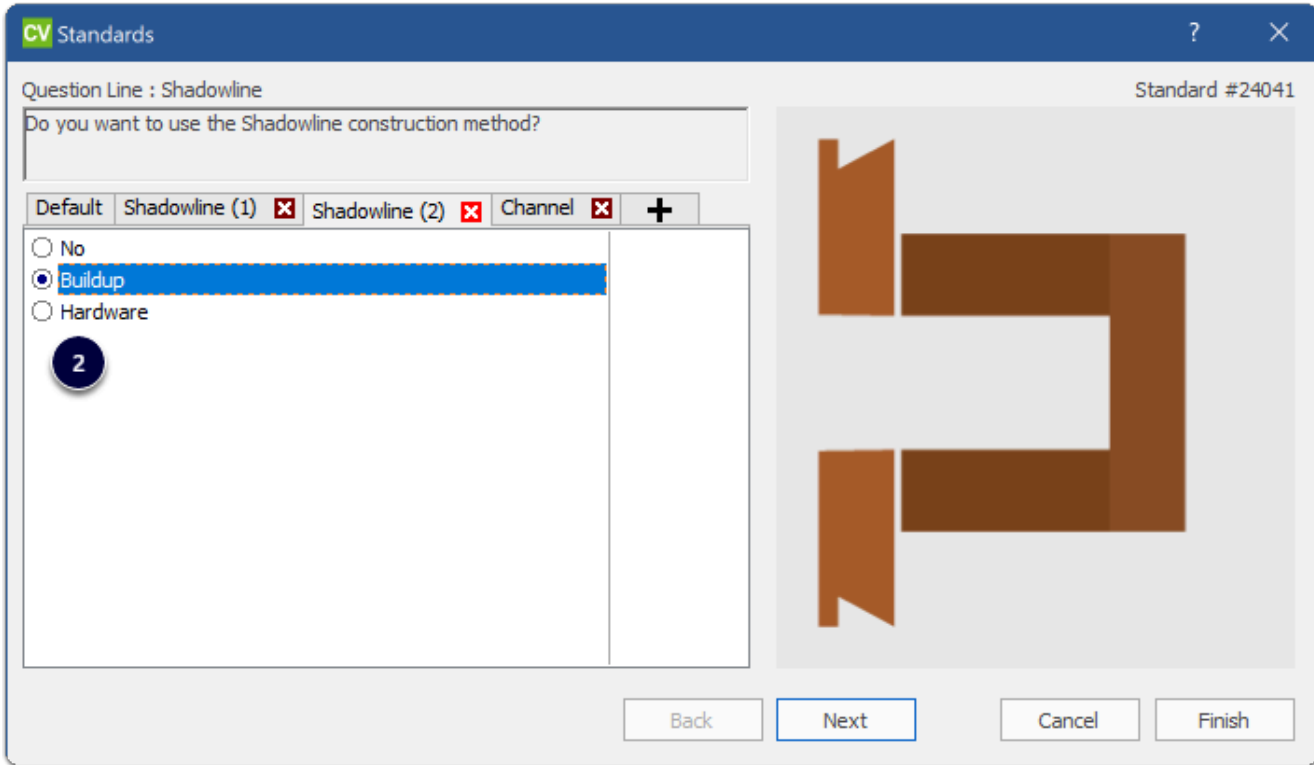
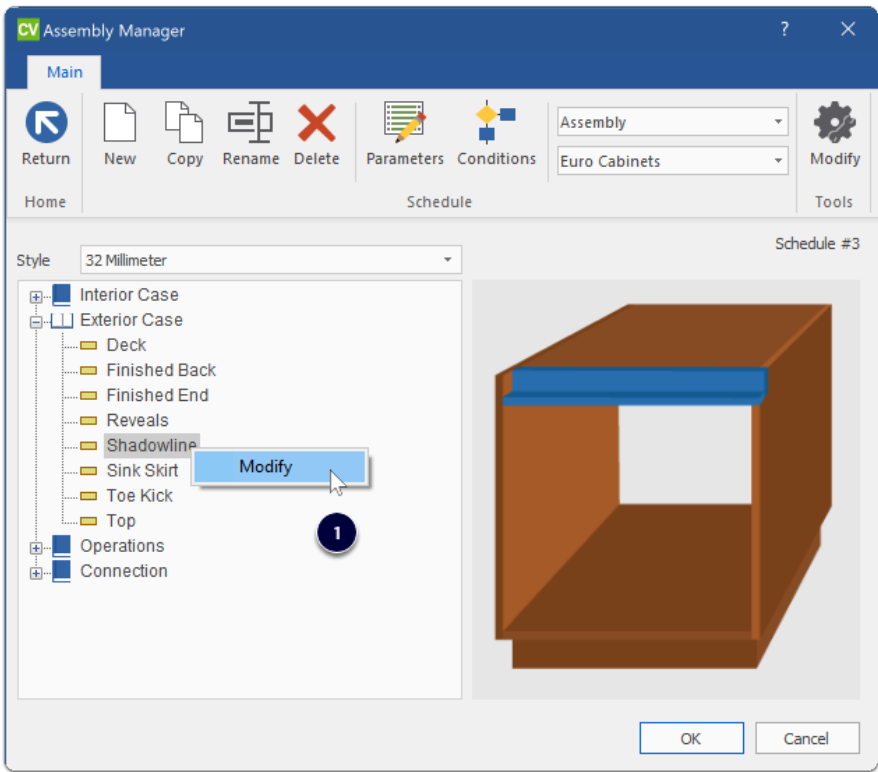
Create your Shadowline Rules

- The following example runs through possible settings for an L-Shaped Rail positioned horizontally for Doors and Drawers
- There are some questions that have been skipped
- Only add your conditions to questions that apply
- Make sure to run through to the very end on your first time through

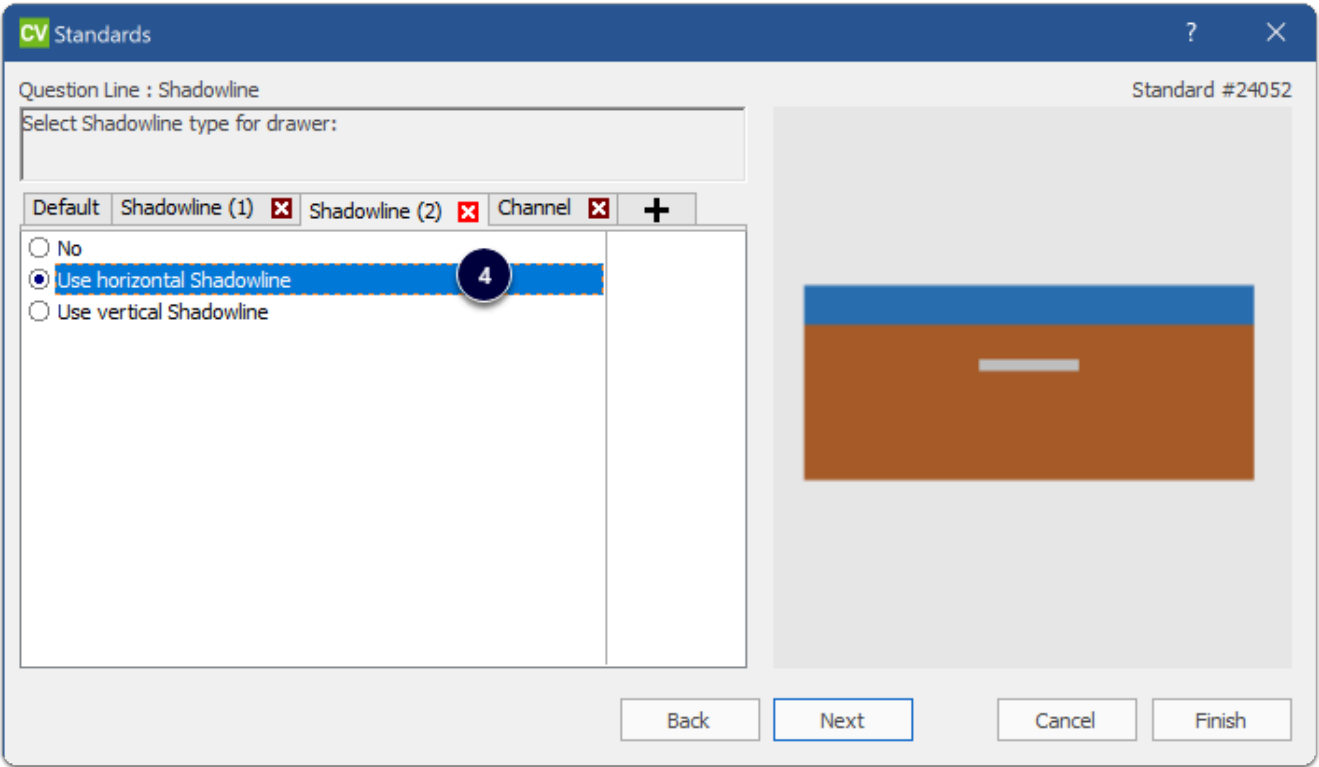
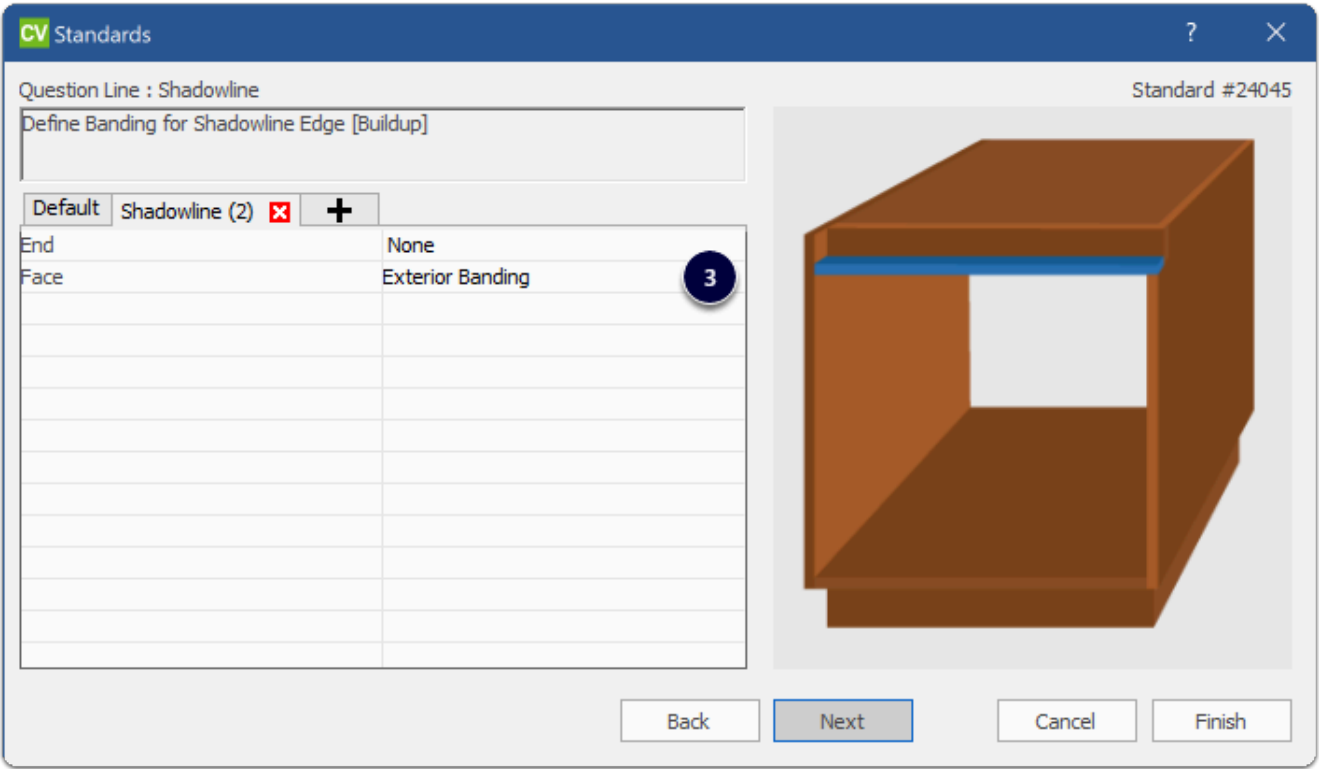
Here are the ones I added for the Horizontal L-Shaped Shadowline Rail and Edge

1. Modify the Shadowline branch of questions
2. Standard 41 - Shadowline Construction Method
3. Standard 45 - Edge Band
4. Standard 52 - Shadowline type for drawer
5. Standard 62 - Shadowline to your top drawer
6. Standard 70 - Shadowline to your middle drawer
7. Standard 64 - Shadowline type for door
8. Standard 65 - Shadowline to your top door
9. Standard 72 - Shadowline to your middle door
10. Standard 48 - Shadowline L-Shaped depth
11. Standard 49 - Shadowline L-Shaped height
12. Standard 74 - Shadowline L-Shaped offset
13. Standard 91 - Shadowline Door/Drawer bottom adjustment from L-Shaped Rail
14. Standard 90 - Shadowline Door/Drawer top adjustment from L-Shaped Rail

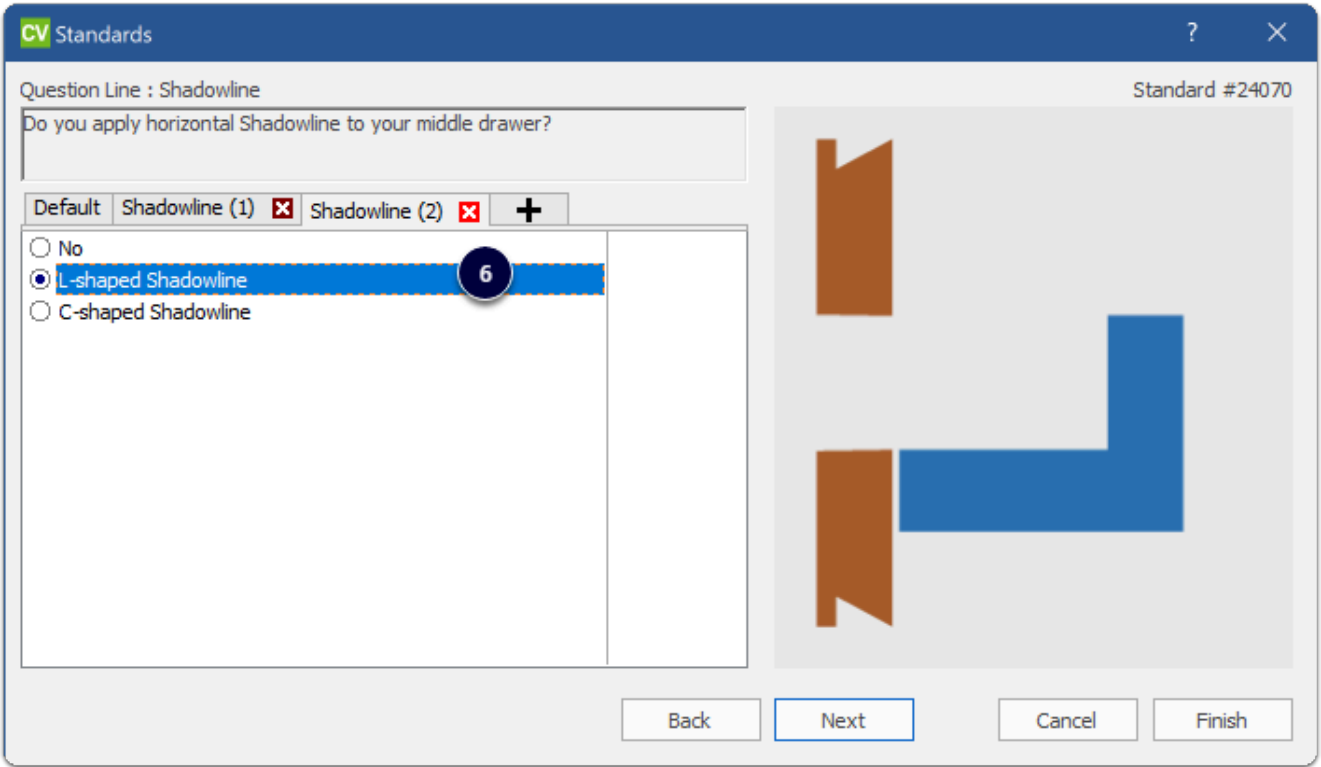
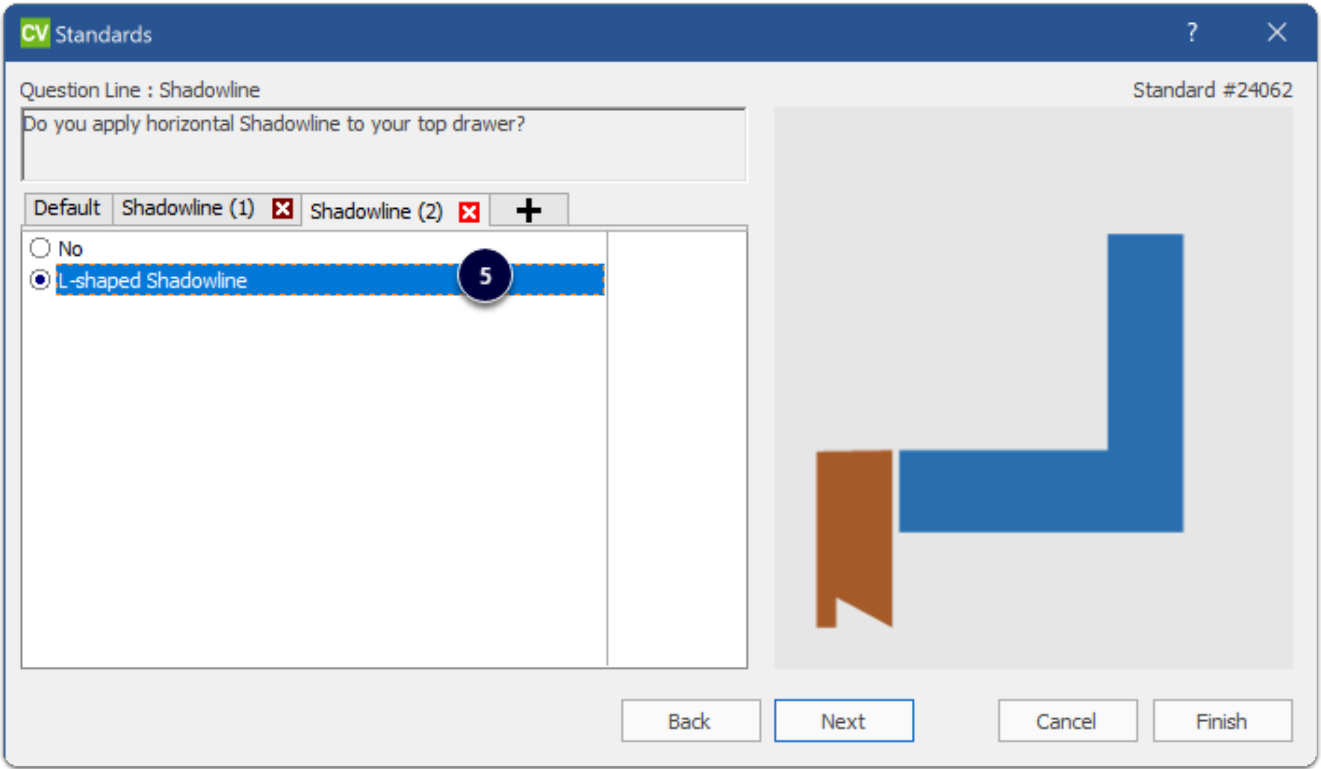
Cabinet Vision Training - Shadowline Channel and more - Post Import



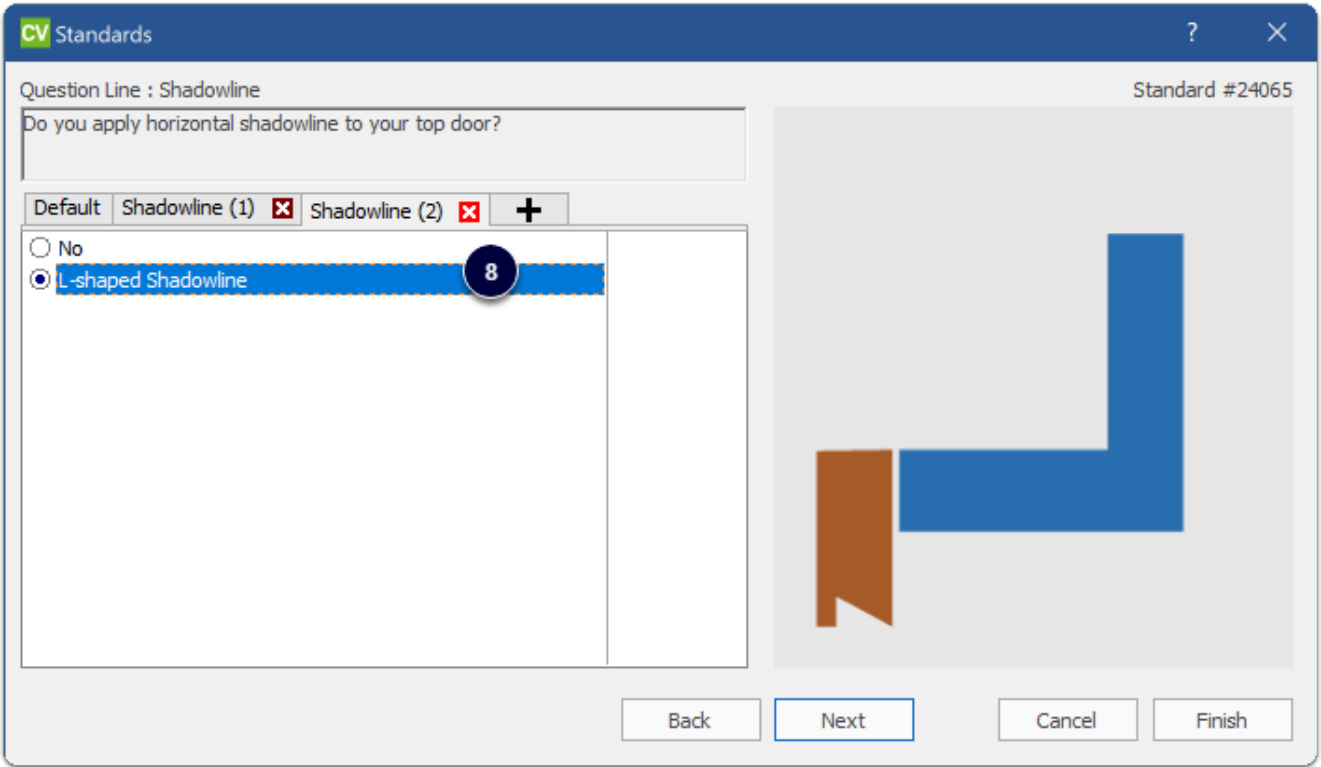
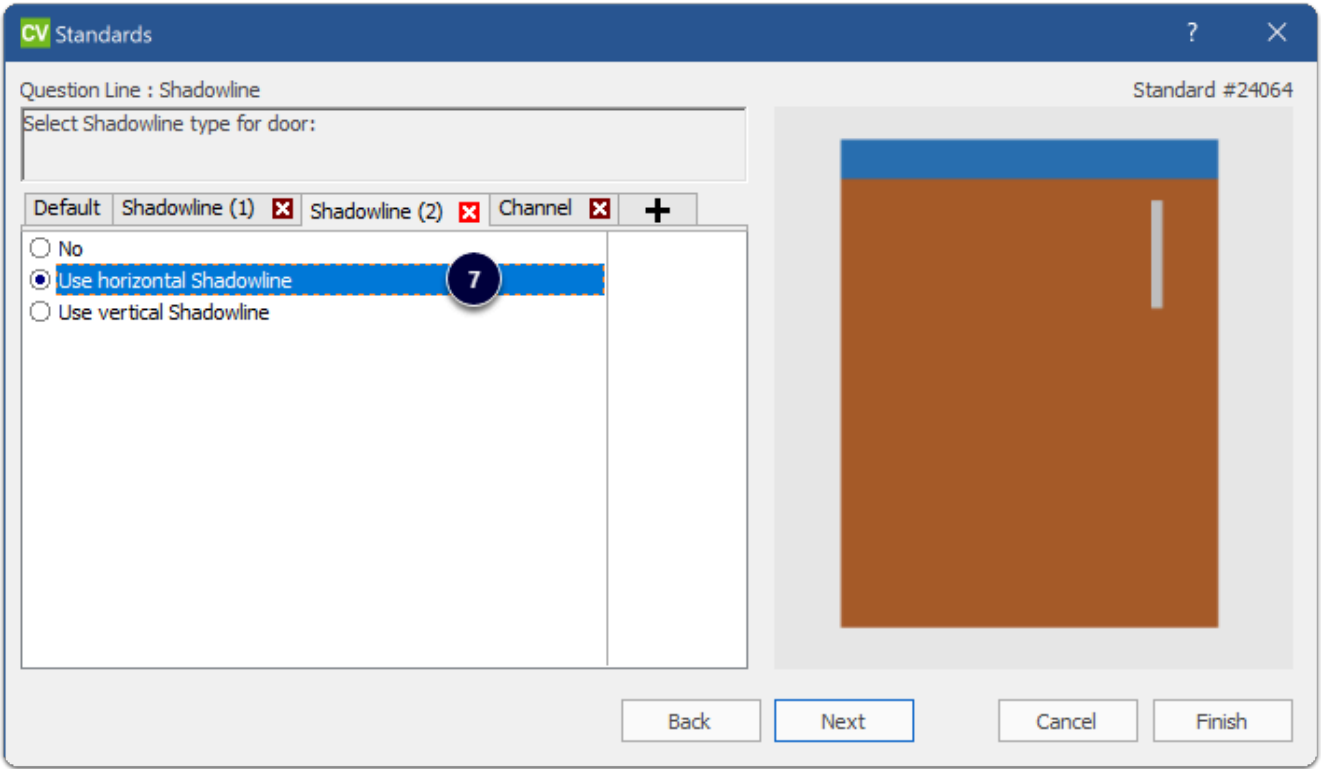
Cabinet Vision Training - Shadowline Channel and more - Post Import



Cabinet Vision Training - Shadowline Channel and more - Post Import



Cabinet Vision Training - Shadowline Channel and more - Post Import



Cabinet Vision Training - Shadowline Channel and more - Post Import

CV Standards

?

×

Question Line : Shadowline

Standard #24072

Do you apply horizontal shadowline to your middle door?


DefaultShadowline (1)Shadowline (2)+

☐ No

☒ L-shaped Shadowline

☐ C-shaped Shadowline

9



BackNextCancelFinish

CV Standards

?

×

Question Line : Shadowline

Standard #24048

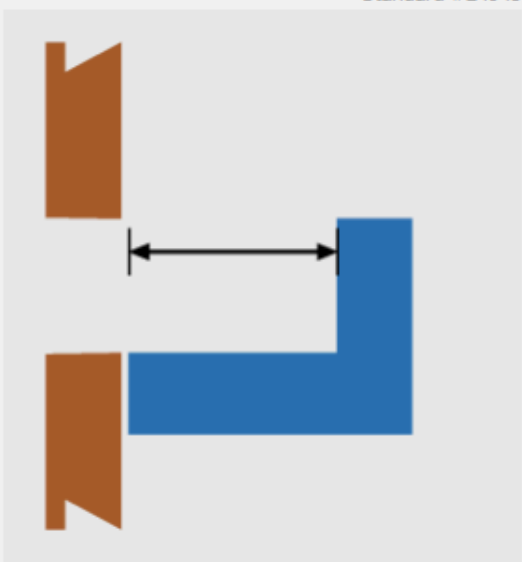
Enter the L-shaped Shadowline depth:

DefaultShadowline (1)Shadowline (2)+

☒ Depth

25 mm

10



BackNextCancelFinish

Cabinet Vision Training - Shadowline Channel and more - Post Import

CV Standards

?

×

Question Line : Shadowline

Standard #24049

Enter the L-shaped Shadowline height:

Default

Shadowline (1) ✕

Shadowline (2) ✕

+

● Height

45 mm

11

Back

Next

Cancel

Finish

CV Standards

?

×

Question Line : Shadowline

Standard #24074

Enter the L-shaped horizontal Shadowline offset:

Default

Shadowline (1) ✕

Shadowline (2) ✕

+

☒ Vertical offset

12

9 mm

Back

Next

Cancel

Finish

Cabinet Vision Training - Shadowline Channel and more - Post Import

CV Standards

?

×

Question Line : Shadowline

Standard #91

Enter the door/drawer bottom adjustment from the horizontal L-shaped Shadowline

Default

Shadowline (1)

Shadowline (2)

+

Bottom adjustment

13

0

mm

Back

Next

Cancel

Finish

CV Standards

?

×

Question Line : Shadowline

Standard #24090

Enter the door/drawer top adjustment from the horizontal L-shaped Shadowline

Default

Shadowline (1)

Shadowline (2)

+

Top adjustment

14

15

mm

Back

Next

Cancel

Finish