



Apps to make Cabinet Vision work for you.

Vercelli Profile Rail - User Guide

Contents of this Article...

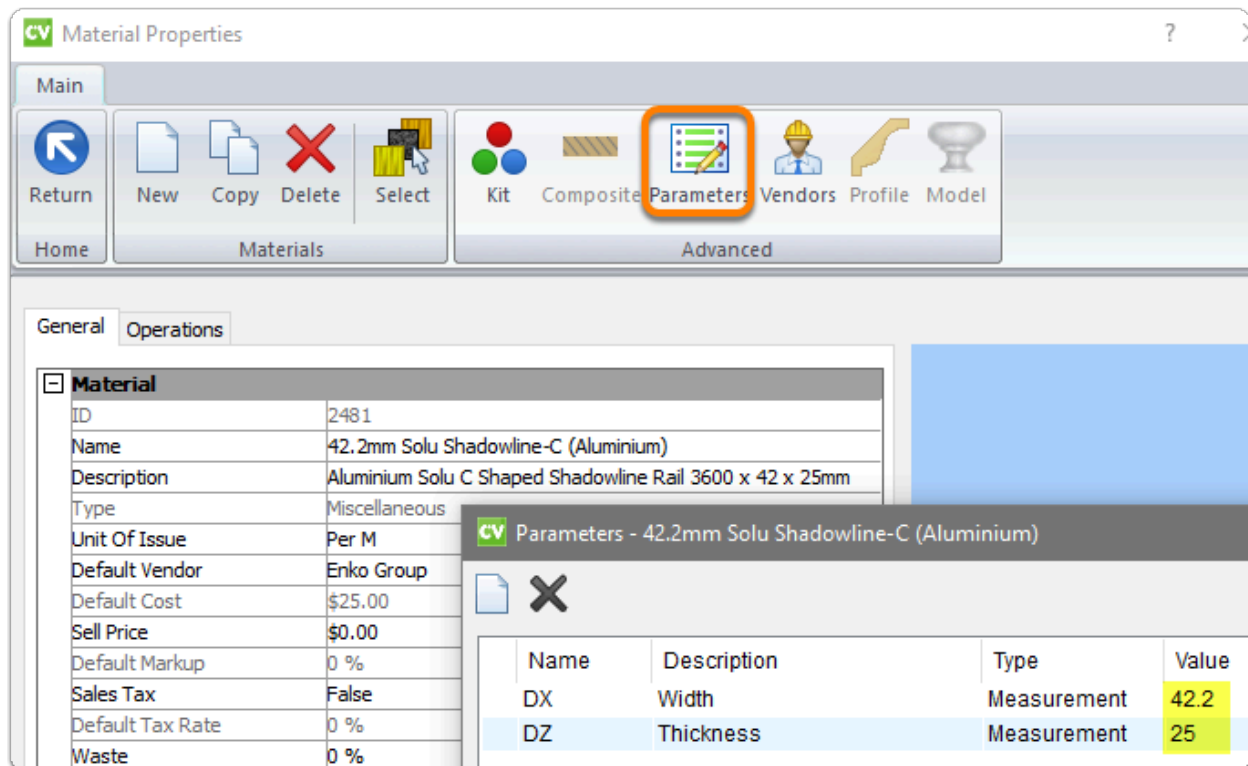
- Pull Material Parameters
- Top Rail Logic
- Cabinet Level Attributes
- Mid Rail Logic
- Mid Rail Attributes
- Pull Schedule - Profile Rail - Vercelli
 - Door Pull - Vercelli Shadowline 42.2mm
 - Drawer Pull - Vercelli Shadowline 52.1mm
- Cross Section Example
- Sectioning a Cabinet
 - Activate the mid rail
 - Spanning multiple cabinets
 - Drawer clearances
 - Adjust mid rail position
- How to shape the end further

Note: This package uses the existence of the "Profile Rail" pull material to trigger the exposed rails. The pull material has parameters to control the rail sizes.

- Right Click Profile Rail pull material > Properties > Parameters

Apps to make Cabinet Vision work for you.

Vercelli Profile Rail - User Guide



💡 Top Rail Logic

- You need to have a drawer, a false front, a door or a panel with a pull on it to activate the top rail on your **Base** or **Vanity** cabinet
- Since the fronts are either handle-less or the door edge is mitered you won't actually have a pull on the door, however, the existence of this pull is the trigger for the profile rails
- When activated - Use cabinet attributes to deactivate, adjust or hide
- Height and depth of the top rail is determined by the Door Pull Material DX and DZ parameters (example in preceding image)

📘 Cabinet Level Attributes

- Profile Rail - Top Rail



Apps to make Cabinet Vision work for you.

Vercelli Profile Rail - User Guide

- Activate and deactivate the top rail and end cut outs
- Profile Rail - Top Rail (Adjust Left)
 - Adjusts the top rail left
- Profile Rail - Top Rail (Adjust Right)
 - Adjusts the top rail right
- Profile Rail - Top Rail (Hide)
 - Hide the top rail when a rail from another cabinet spans this rail space
 - This option keeps end and partition cut outs for the top rail while the rail is hidden

Mid Rail Logic

- You need to have a drawer, a false front, a door or a panel with a pull on it to activate a mid rail on any cabinet type
- Click on the face split between fronts in section view and give rails their width on the side bar (52.1mm)
- Adjust Rail left and right to cut through partitions and ends
- Depth of the rail is determined by the pull material DZ parameter (example in preceding image)

Mid Rail Attributes

- Dado Operation (Left)
- Dado Operation (Right)
 - Only use dado operations when the rail doesn't cut all the way through the end or partition
 - Enter operation depth to activate end rebates

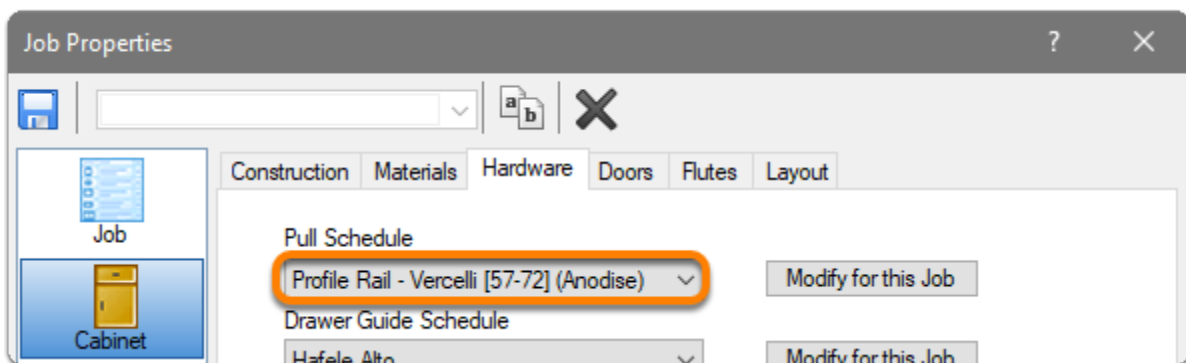
Apps to make Cabinet Vision work for you.

Vercelli Profile Rail - User Guide

- Rail (Hide)
 - Hide the rail when another rail spans this rail space
 - This option keeps end and partition cut outs for the mid rail

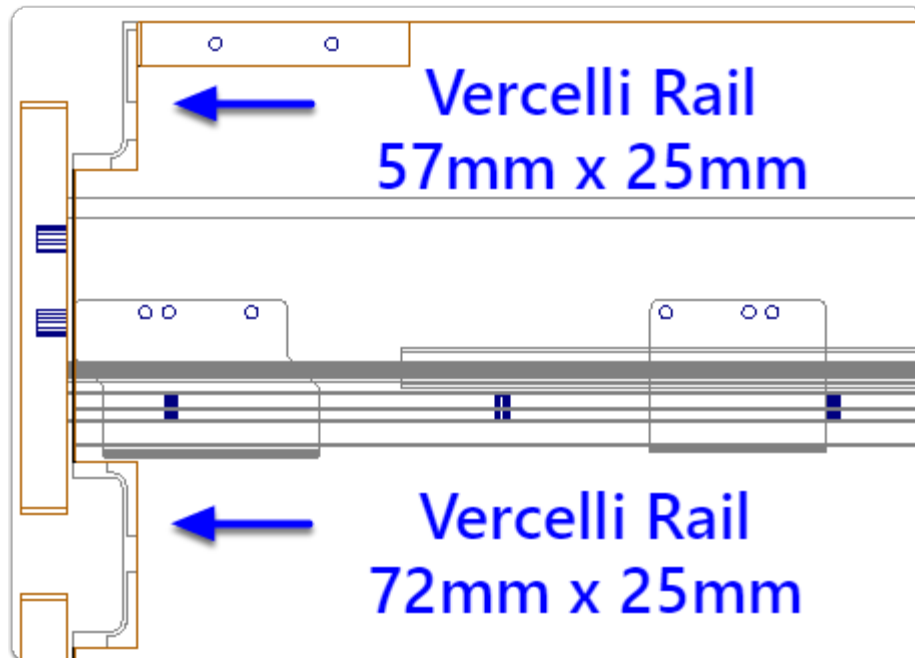
i Job Properties > Cabinet > Hardware > Pull Schedule

- Profile Rail - Vercelli [57-72] (Brushed Nickel)
- Profile Rail - Vercelli [57-72] (Anodised)
- Profile Rail - Vercelli [57-72] (Matt Black)
- Profile Rail - Vercelli [57-72] (White)



Cross Section Example

Vercelli Profile Rail - User Guide



i Sectioning a Cabinet

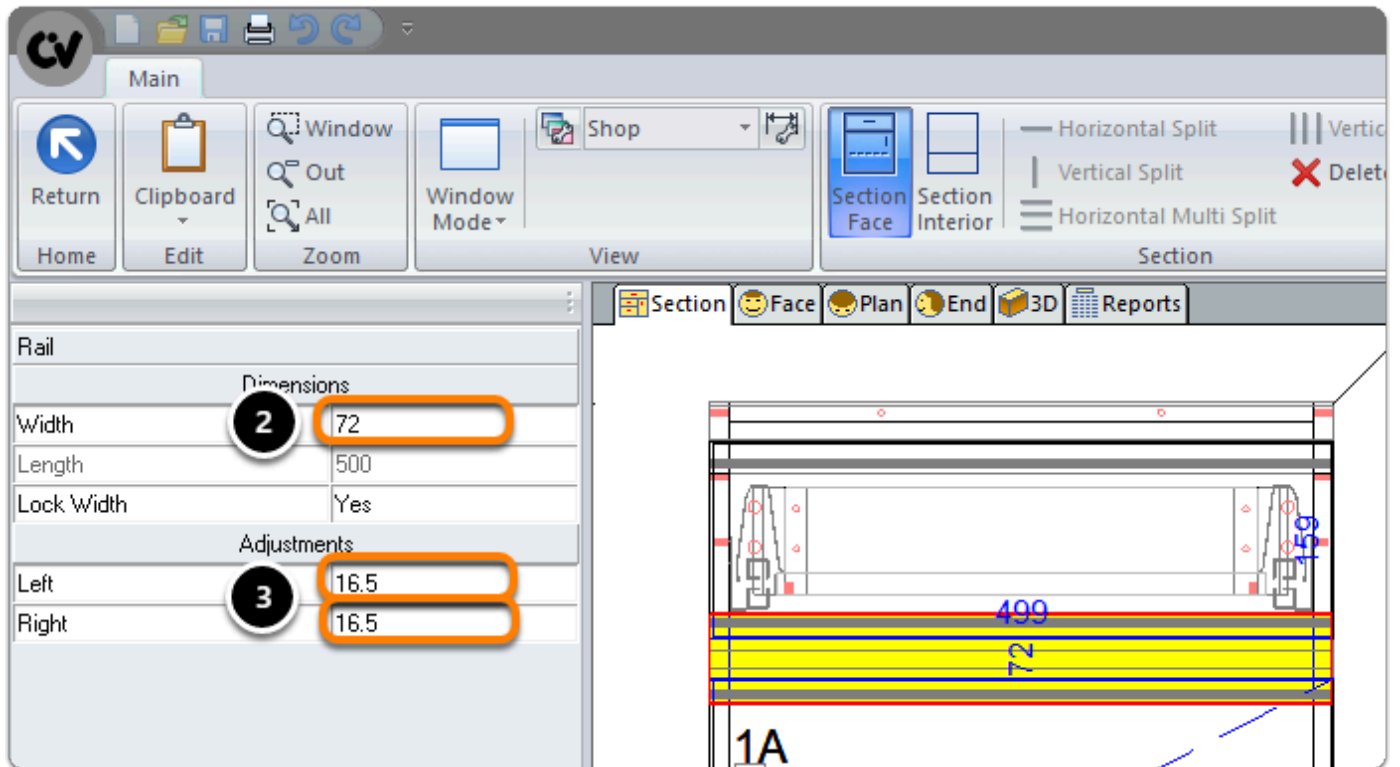
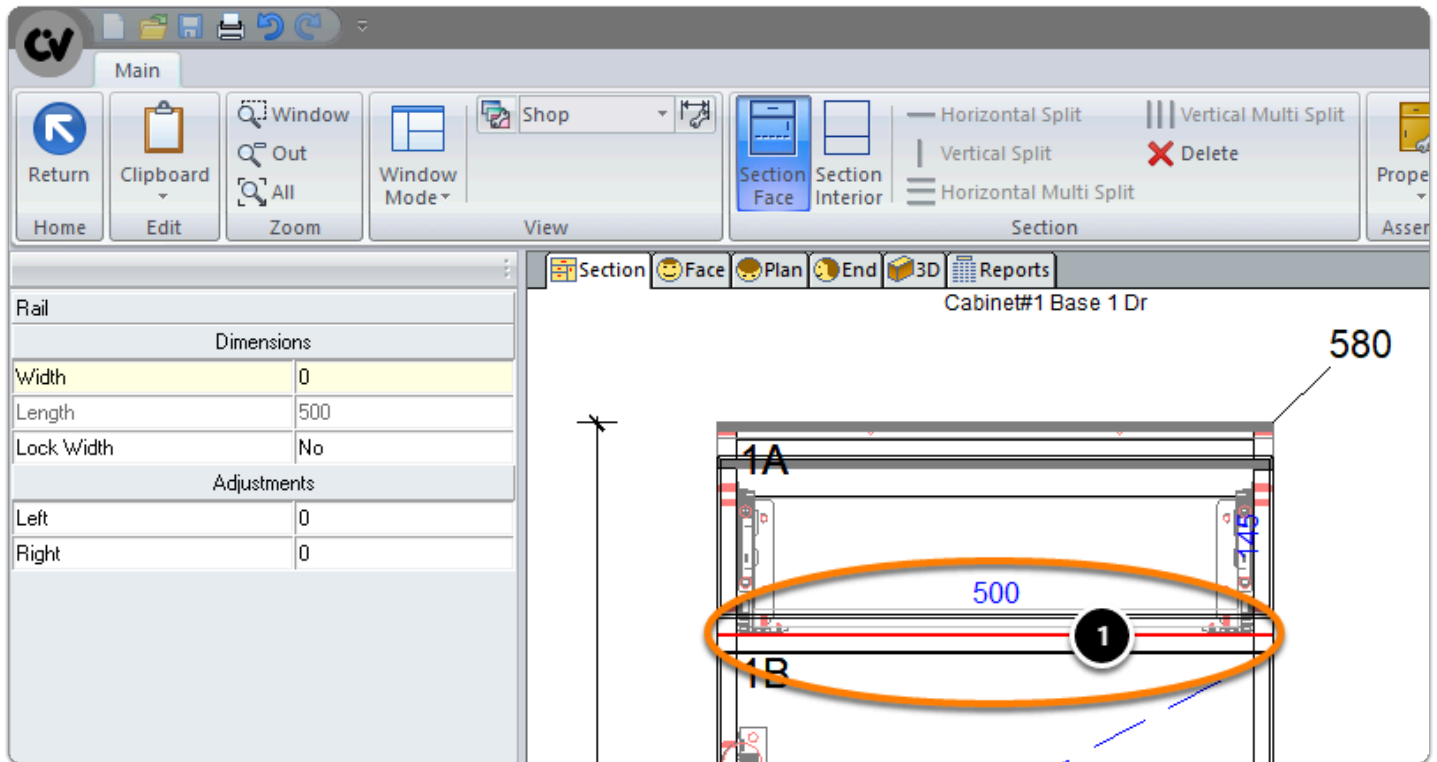
Activating a Mid Rail

1. Section Editor > Face > Left Click Horizontal Face Split (Note width is 0mm)
2. Enter your size (Vercelli Shadowline 52.1mm)
3. Use Left and Right adjustments to push the rail through ends and partitions

Note: Left and Right Adjustments can be used to span the rail to the correct size for the nest - We would still set up the rail in the adjoining cabinet to push through the ends. Then use the Mid Rail Attribute to "Hide" it, removing it from the reports

Apps to make Cabinet Vision work for you.

Vercelli Profile Rail - User Guide



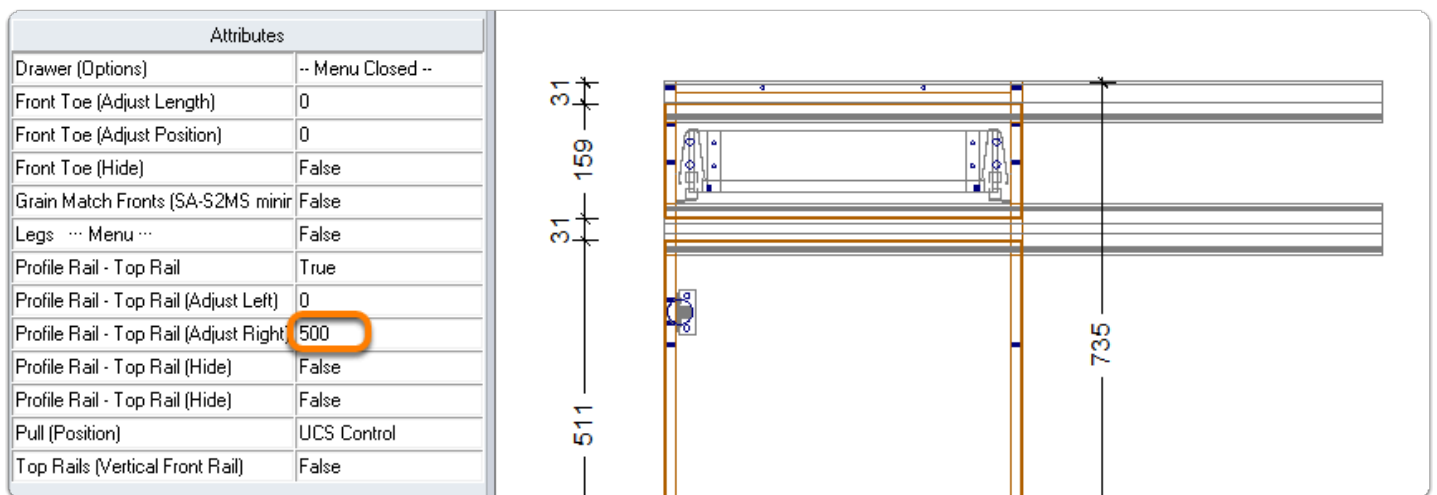
Apps to make Cabinet Vision work for you.

Vercelli Profile Rail - User Guide

i Sectioning a Cabinet

- Example of Spanning Multiple Cabinets
- The Mid Rail Right Adjustment is set to span 516.5mm
- Then I set the cabinet attribute for the Top Rail to 500mm

Here is the result...

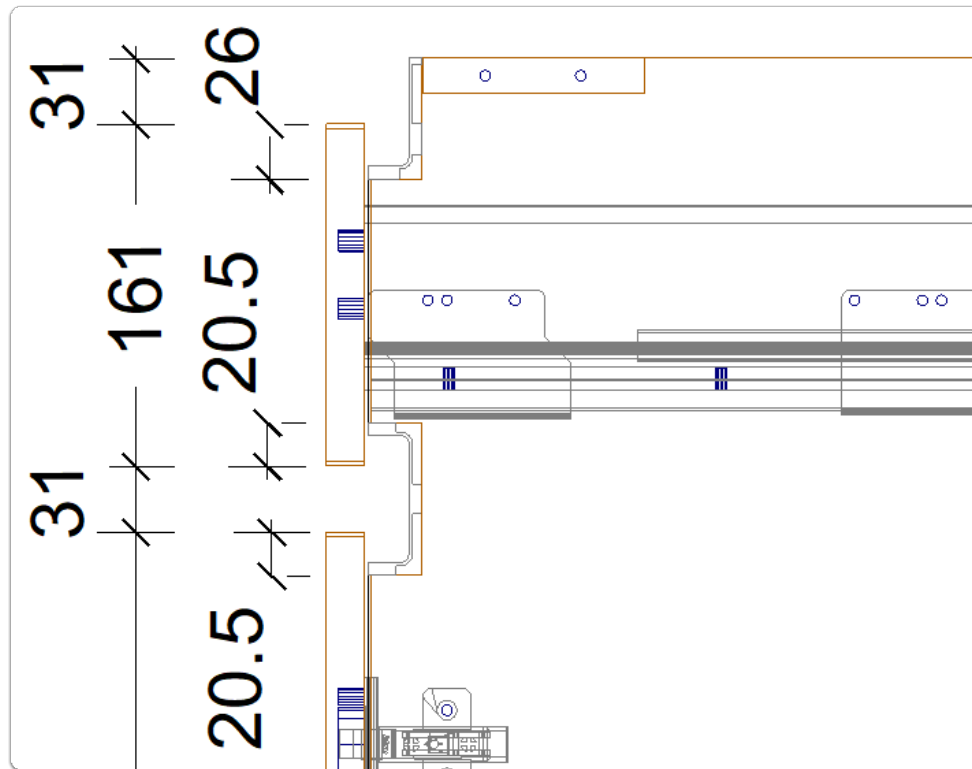


💡 Sectioning a Cabinet

Drawer Clearances are automatic because we are using Cabinet Vision Parts introduced into the cabinet from the Section Editor

Apps to make Cabinet Vision work for you.

Vercelli Profile Rail - User Guide



! Drawer clearances are automatic, however, the Mid Rail is positioned centrally in height as seen when reviewing the end view above.

Exception: We have automated Drawer Front adjustments from the CV12 download - Use Public Variable on UCS number 3 to move the mid rail down...

i Sectioning a Cabinet

- Adjusting the Mid Rail Position (Manually)
- Use Top and Bottom Size Adjustments for each Front to effectively move the position of the rail...

1. Section Editor > Face > Left Click the top drawer front
2. Size Adjustment > Bottom (Subtract suitable value)

Apps to make Cabinet Vision work for you.

Vercelli Profile Rail - User Guide

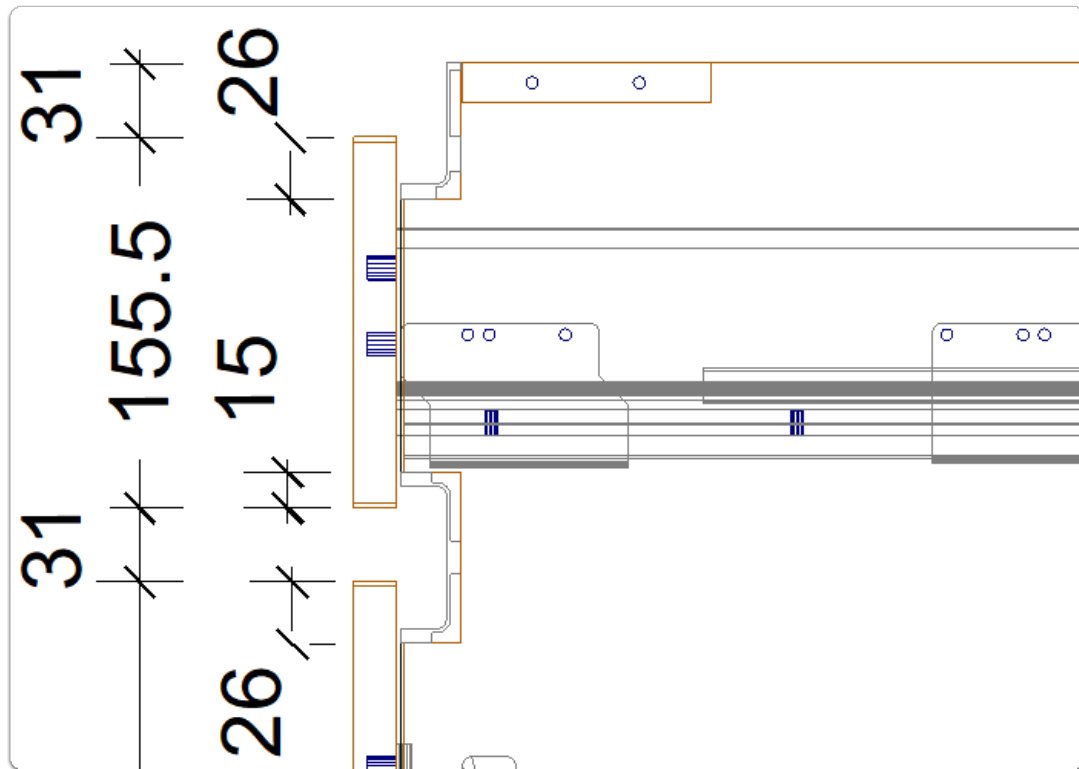
3. Edit remaining door or drawer front top and bottom size adjustments as needed
4. Review your set up from the end view again

Bottom	15.5
Left Side	5.5
Right Side	5.5
Size Adjustments	
Left	0
Right	0
Top	0
Bottom	-5.5

The diagram illustrates the assembly of a cabinet drawer. Callout 1 indicates the top rail with a dimension of 499. Callout 2 indicates the bottom rail with a dimension of 15.5. Callout 3 indicates the side rail with a dimension of 72. A coordinate system (1A, X, Y, Z) is shown at the bottom left.

Apps to make Cabinet Vision work for you.

Vercelli Profile Rail - User Guide



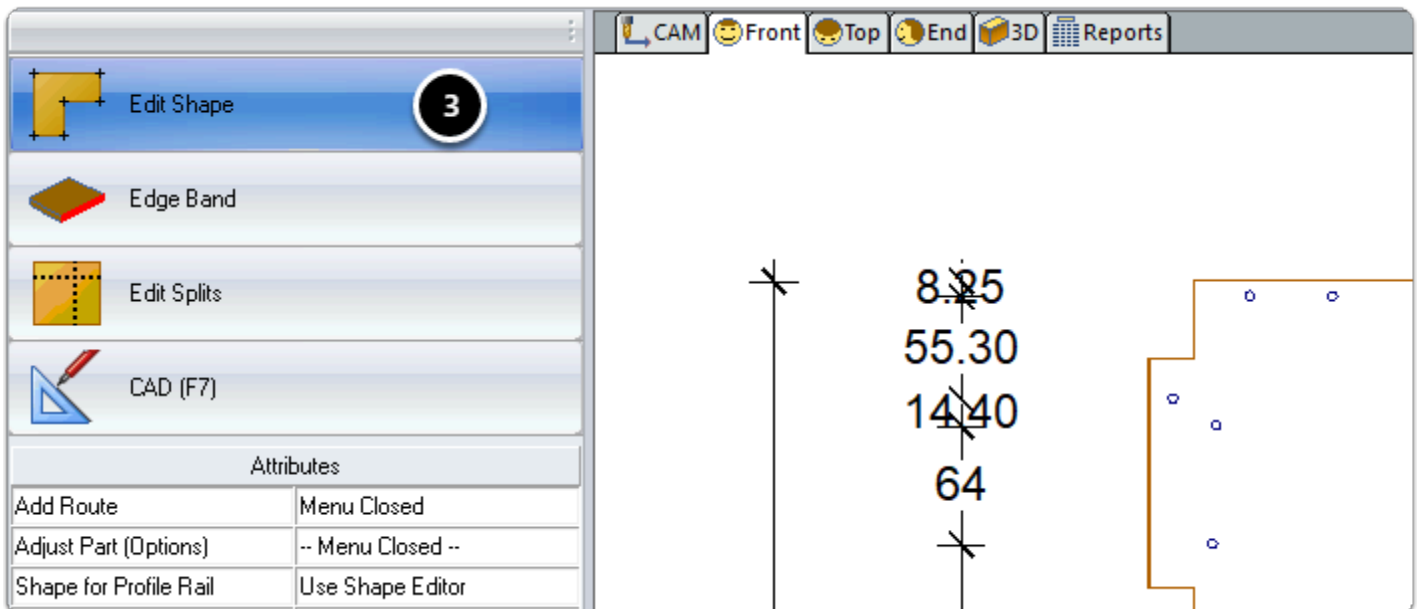
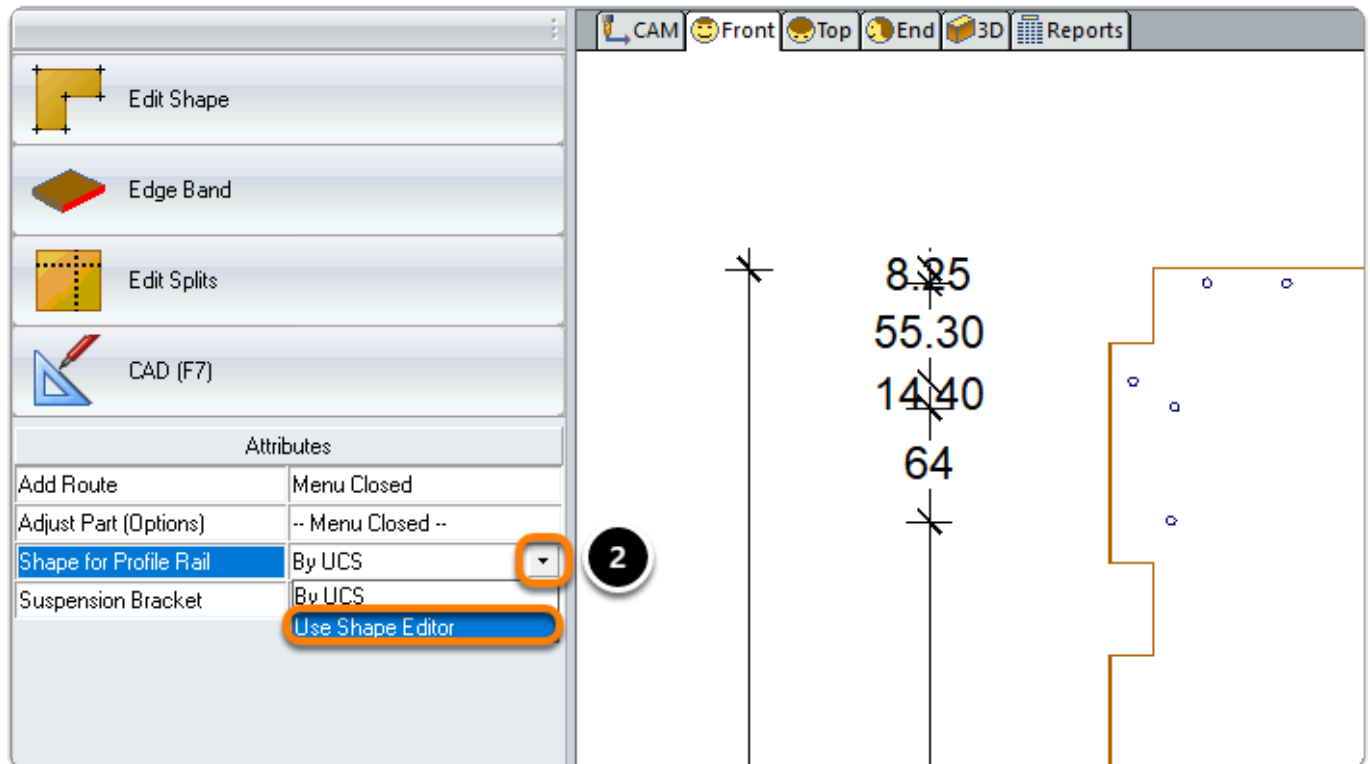
i End Shaping - You're able to edit the shape of ends and partitions a little more

We recommend the following steps be taken after you're happy the cabinet set out. Follow these steps to keep the Library Part shape and edit a little further - In this example I will take a chunk out from the top edge of the right end.

1. Take the part to part level (Double Click the part in one of the orthographic views)
2. Shape End for Profile Rail - Toggle attribute to use shape editor
3. Edit Shape as normal
4. Return and save shape

Apps to make Cabinet Vision work for you.

Vercelli Profile Rail - User Guide



Apps to make Cabinet Vision work for you.

Vercelli Profile Rail - User Guide

