

Shaker Doors - What's Included

Contents of this Article...

- UCS Variables
- Door Attributes
- Cross Section
- Shaker Door (Painted MDF)
 - Material Schedules
- Shaker Door (Melamine/Veneer - Vertical Grain)
 - Material Schedules
- Shaker Door (Melamine/Veneer - Horizontal Grain)
 - Material Schedules

UCS Public Variables [default UCS values]...

Edit UCS variables to set the default values for every job on the current PC

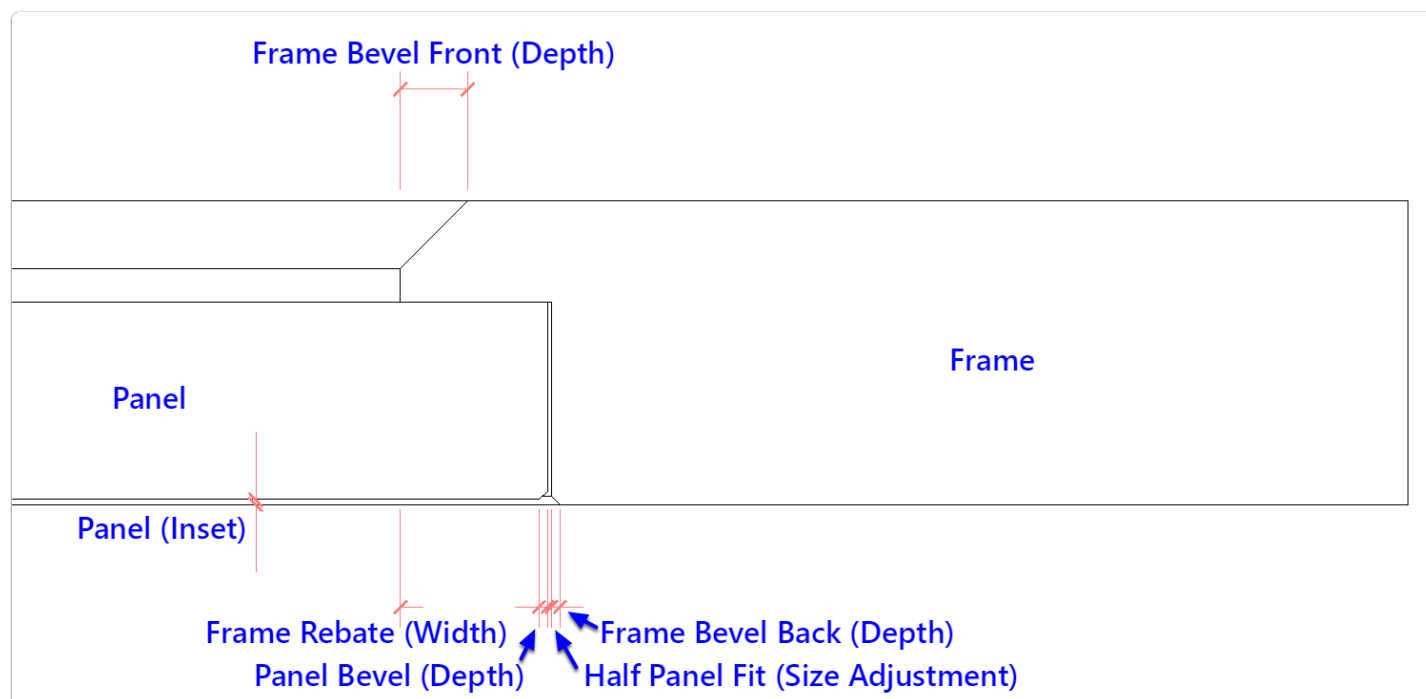
- Frame Bevel (Back Depth) [0mm]
- Frame Bevel (Front Depth) [0mm]
- Frame Bevel (Offset) [1mm]
- Frame Width (Left) [60mm]
- Frame Width (Right) [60mm]
- Frame Width (Top) [60mm]
- Frame Width (Bottom) [60mm]
- Panel Bevel (Depth) [0mm]
- Panel Bevel (Offset) [1mm]
- Panel Corners (Radius) [4.8mm]
- Panel (Inset) [0mm]
- Panel Fit (Size Adjustment) [0mm]

Door Attributes...

These values remain editable on each door and drawer front in the job

- Frame Width (Left)
- Frame Width (Right)
- Frame Width (Top)
- Frame Width (Bottom)
- Panel (Inset)
- Panel Fit (Size Adjustment)

Cabinet Vision Training - Shaker Doors - What's Included



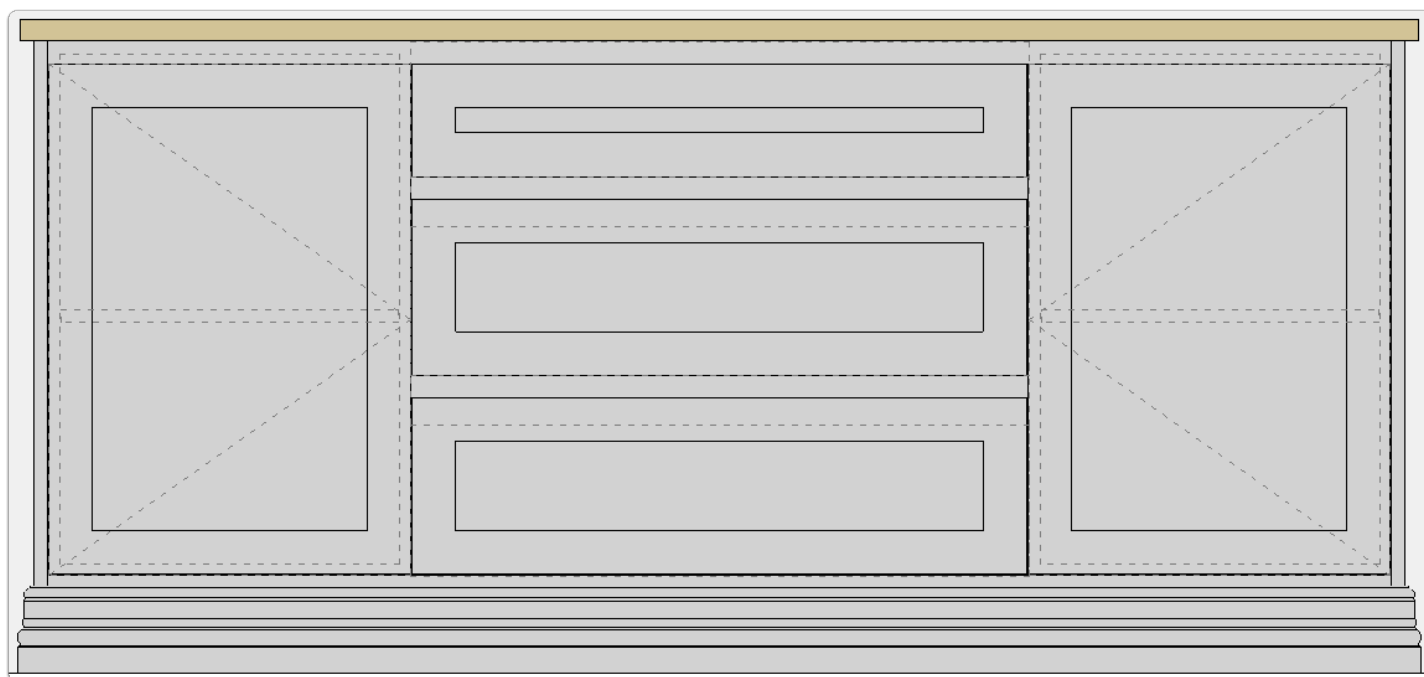
💡 Setting Bevel depths to 0mm will disable the bevel routes

Note: Bevel routes are switched off in the package by default

❗ Required before bevel operations are activated...

- Your Vee Cutter 'ToolID' needs to be added to the UCS

Cabinet Vision Training - Shaker Doors - What's Included



Painted Shaker Door - Material Schedules	Description
MDF 16 (1)	16mm MDF Panel with 1mm Edge Band
MDF 16 (no band)	16mm MDF Panel with no Edge Band
MDF 18 (1)	18mm MDF Panel with 1mm Edge Band
MDF 18 (no band)	18mm MDF Panel with no Edge Band
MDF 25 (1)	25mm MDF Panel with 1mm Edge Band
MDF 25 (no band)	25mm MDF Panel with no Edge Band

Melamine/Veneer Shaker Door (Vertical Grain) - Material Schedules	Description
Colour 16 (1)	16mm Coloured Panel with 1mm Edge Band
Colour 16 (2)	16mm Coloured Panel with 2mm Edge Band
Colour 18 (1)	18mm Coloured Panel with 1mm Edge Band
Colour 18 (2)	18mm Coloured Panel with 2mm Edge Band
Colour 25 (1)	25mm Coloured Panel with 1mm Edge Band

Cabinet Vision Training - Shaker Doors - What's Included

Melamine/Veneer Shaker Door (Vertical Grain) - Material Schedules	Description
Colour 25 (2)	25mm Coloured Panel with 2mm Edge Band
Grain 16 (1)	16mm Grained Panel with 1mm Edge Band
Grain 16 (2)	16mm Grained Panel with 2mm Edge Band
Grain 17 (0.5)	17mm Grained Panel with 0.5mm Edge Band
Grain 17 (2)	17mm Grained Panel with 2mm Edge Band
Grain 18 (1)	18mm Grained Panel with 1mm Edge Band
Grain 18 (2)	18mm Grained Panel with 2mm Edge Band
Grain 19 (0.5)	19mm Grained Panel with 0.5mm Edge Band
Grain 19 (2)	19mm Grained Panel with 1mm Edge Band
Grain 25 (0.5)	25mm Grained Panel with 0.5mm Edge Band
Grain 25 (1)	25mm Grained Panel with 1mm Edge Band
Grain 25 (2)	25mm Grained Panel with 2mm Edge Band

Melamine/Veneer Shaker Door (Horizontal Grain) - Material Schedules	Description
Grain 16 (1)	16mm Grained Panel with 1mm Edge Band
Grain 16 (2)	16mm Grained Panel with 2mm Edge Band
Grain 17 (0.5)	17mm Grained Panel with 0.5mm Edge Band
Grain 17 (2)	17mm Grained Panel with 2mm Edge Band
Grain 18 (1)	18mm Grained Panel with 1mm Edge Band
Grain 18 (2)	18mm Grained Panel with 2mm Edge Band
Grain 19 (0.5)	19mm Grained Panel with 0.5mm Edge Band
Grain 19 (2)	19mm Grained Panel with 1mm Edge Band
Grain 25 (0.5)	25mm Grained Panel with 0.5mm Edge Band

Cabinet Vision Training - Shaker Doors - What's Included

Melamine/Veneer Shaker Door (Horizontal Grain) - Material Schedules	Description
Grain 25 (2)	25mm Grained Panel with 2mm Edge Band