


Shadowline Channel and more - What's Included

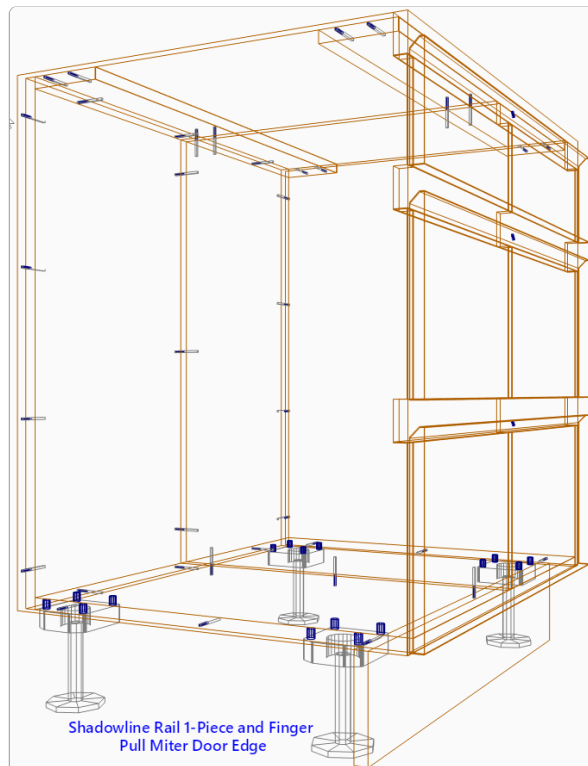
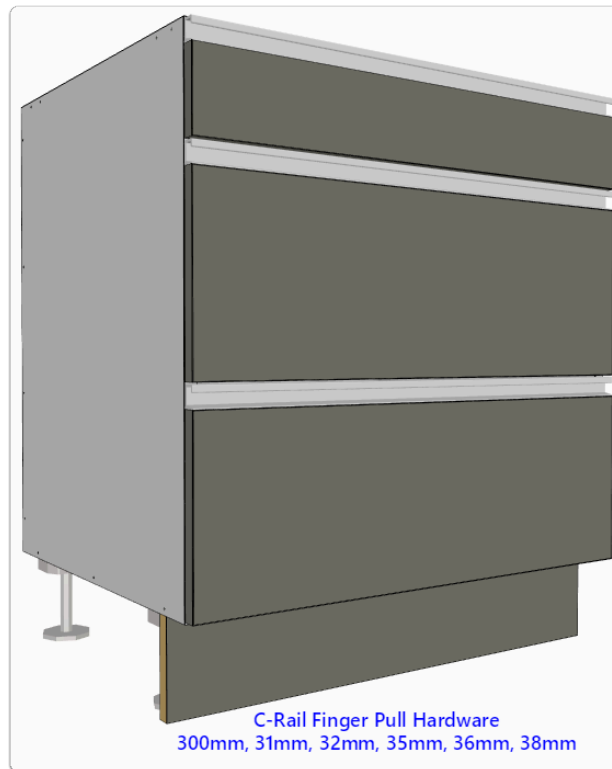
Contents of this Article...

- Finger Pull Hardware (Various sizes)
- Shadowline Rail 1-Piece and Finger Pull Miter Door Edge
- Shadowline Rail L-Shaped
- Generic Shadowline Channel and bracket
- Apollo Shadowline profile and bracket
- Capri Shadowline profile and bracket
- Gola Shadowline profile and bracket
- Hafele Shadowline profiles
- Hettich Shadowline profile and bracket
- Mardeco Shadowline profile and bracket
- Vercelli Shadowline profile and bracket

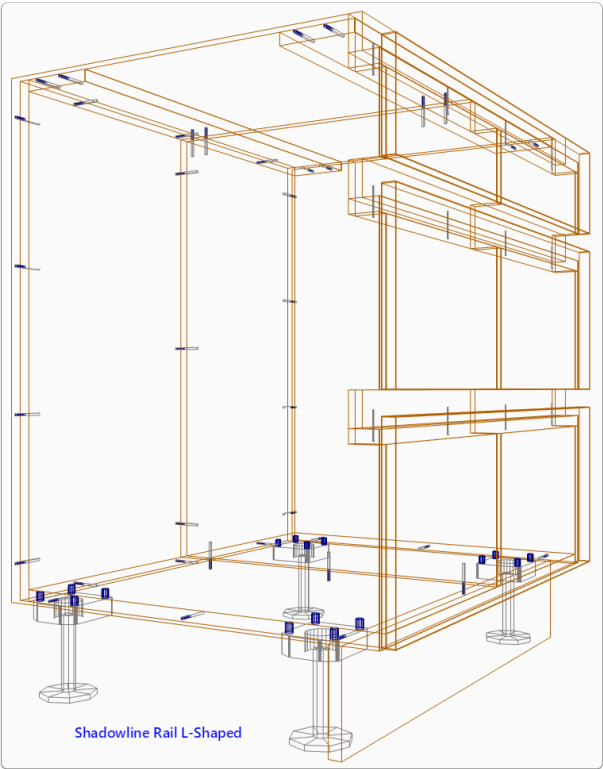
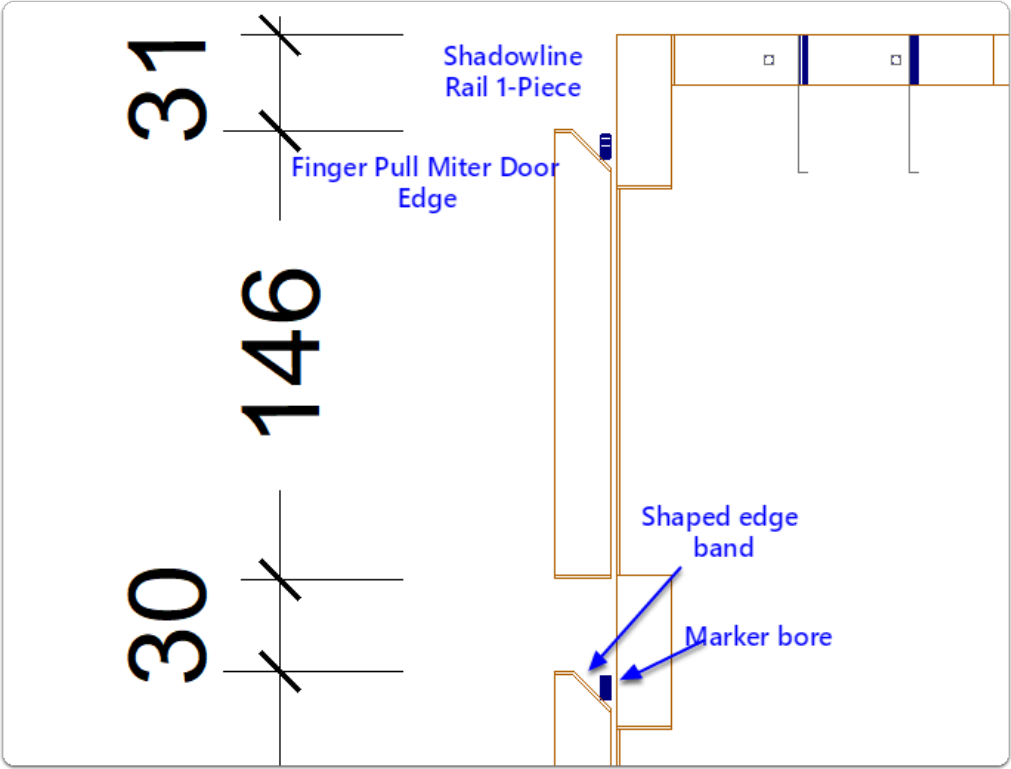
 **NOTE:** This package includes 8 different Shadowline Channel materials. However, since the package activates from a single assembly condition (in respect to door and drawer front adjustments next to Shadowline) we recommend having a single material as your Assembly Material Schedule default Mid and Outer Shadowline Channel.

Also NOTE: The package uses differing "Mid" and "Outer" channel as default. It is easy to use the same outer and mid rails if you choose. Check out the User Guide to see what settings are linked to that change.

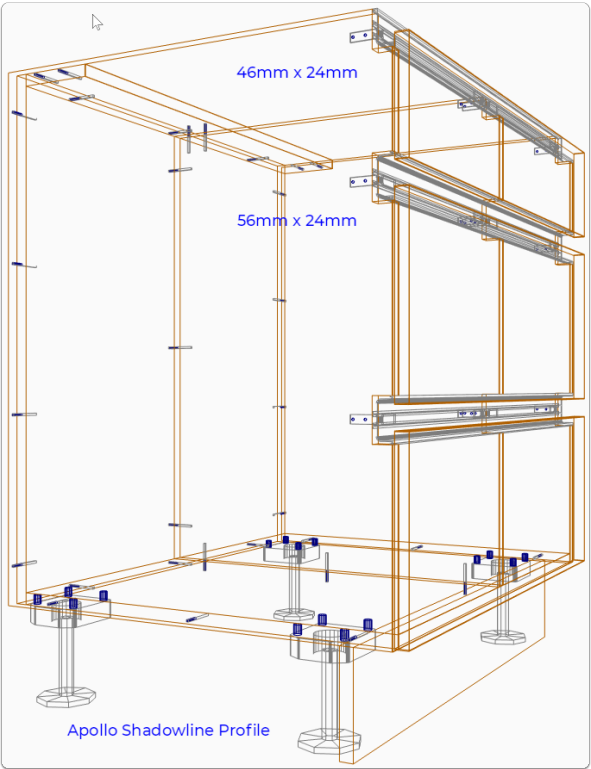
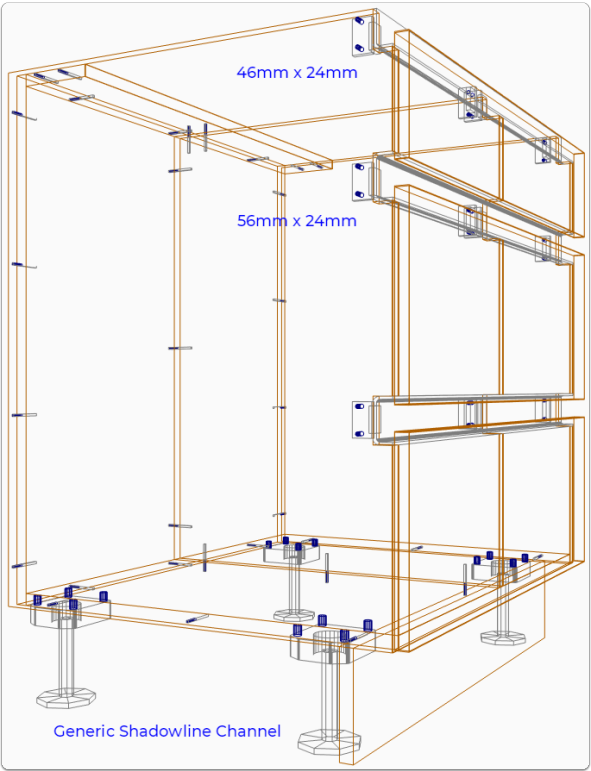
Cabinet Vision Training - Shadowline Channel and more - What's Included



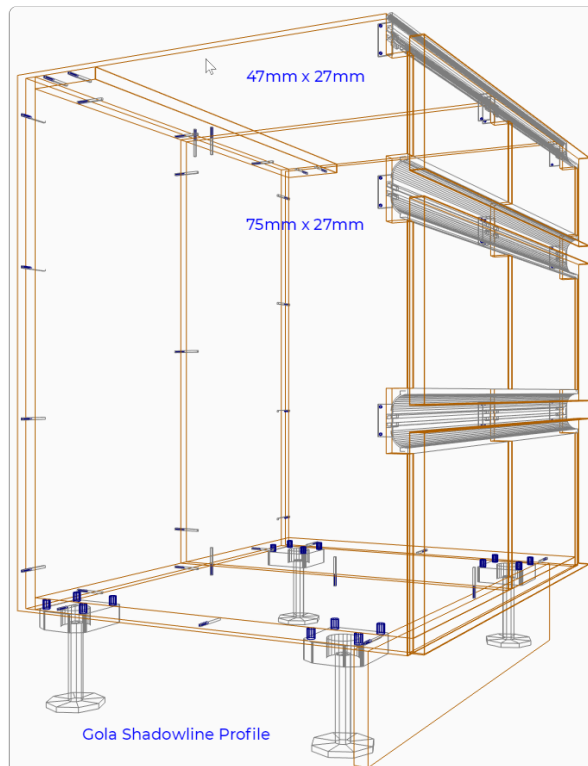
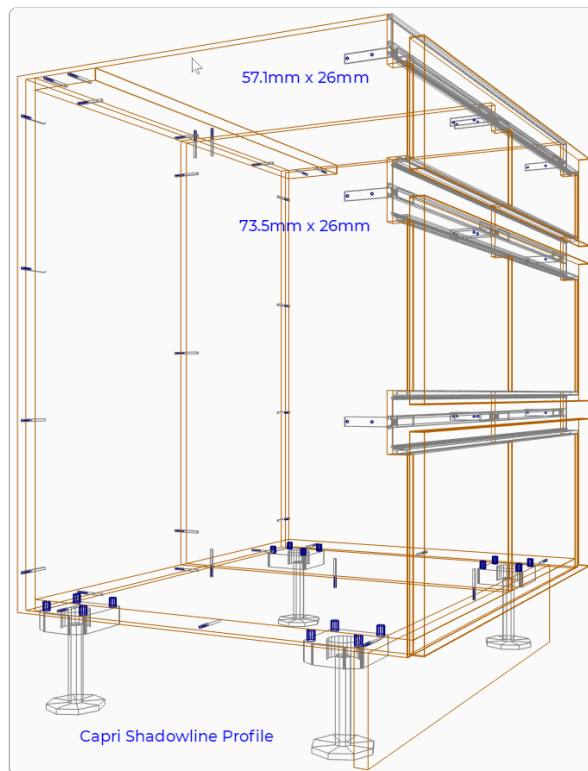
Cabinet Vision Training - Shadowline Channel and more - What's Included



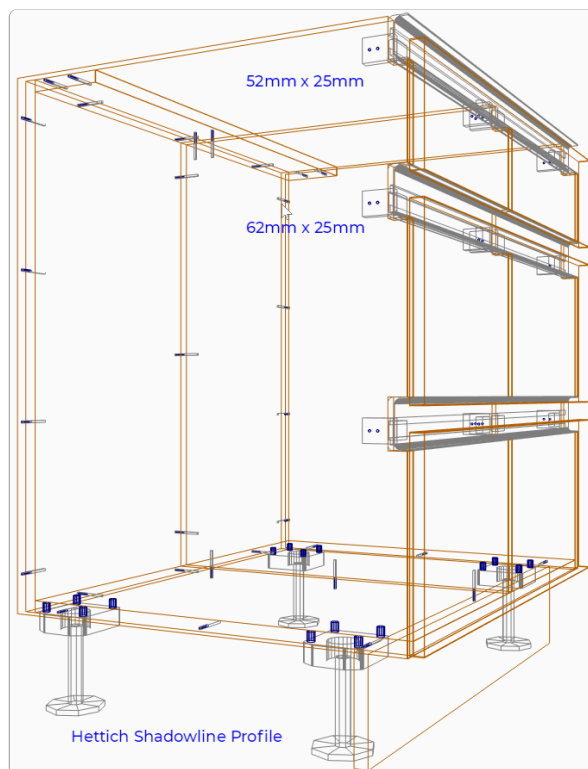
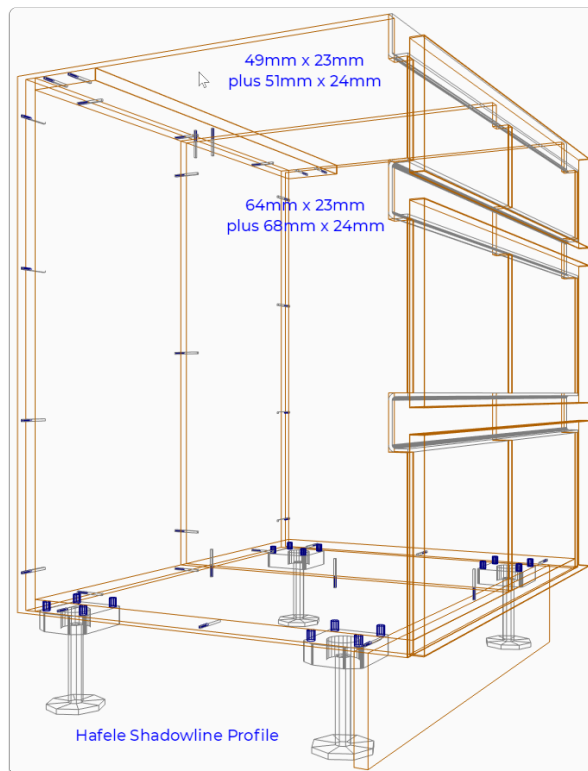
Cabinet Vision Training - Shadowline Channel and more - What's Included



Cabinet Vision Training - Shadowline Channel and more - What's Included



Cabinet Vision Training - Shadowline Channel and more - What's Included



Cabinet Vision Training - Shadowline Channel and more - What's Included

