

# Blum METABOX drawer system - Post Import

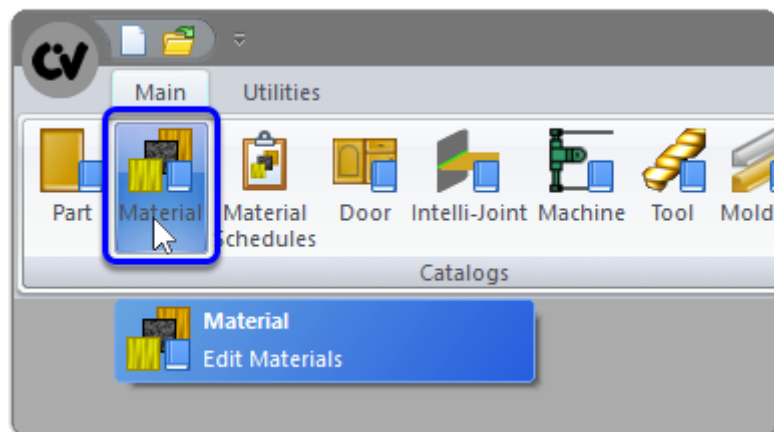
## 💡 Contents of this Article...

- Use or replace the new imported edge banding
- Organise Blum Metabox Guide material groups in the Material Manager
- Remove empty groups
- Order of UCS

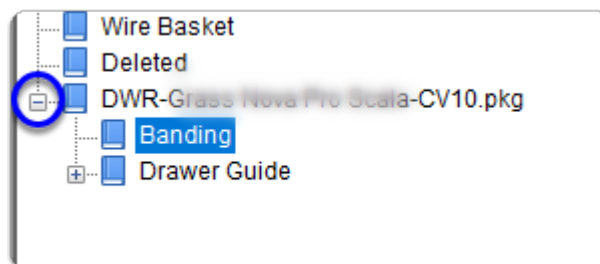
We need to move new materials into appropriate Groups, then delete any unneeded Materials or Empty Groups...

- One of the decisions is whether to use the imported edge band or to substitute it with an existing edge band
- In this example I substitute with an existing edge band

a) Open the Material Manager



b) Expand the new group with the package name > Left Click the Banding Group

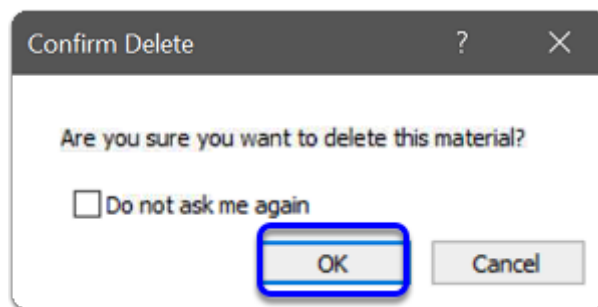
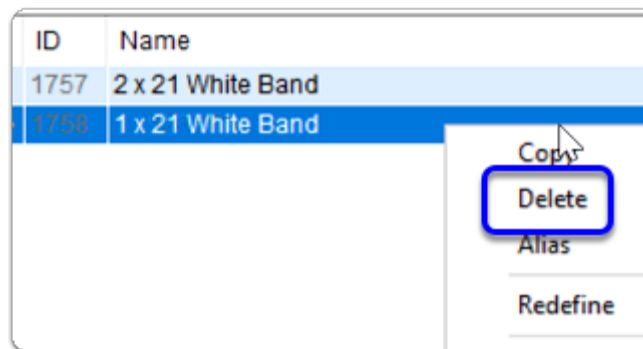


# Blum METABOX drawer system - Post Import

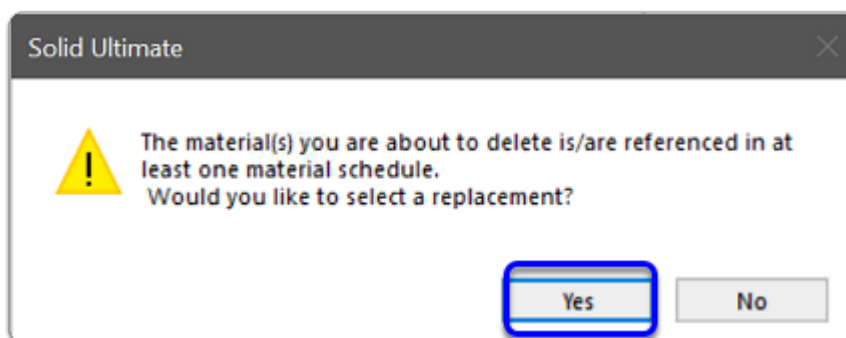
In this section I delete the imported edge band so that I can replace it with the edge band that I already have in the system

c) Delete any banding products you already have on the system

💡 When we delete 1mm white banding we will be prompted to select a replacement material

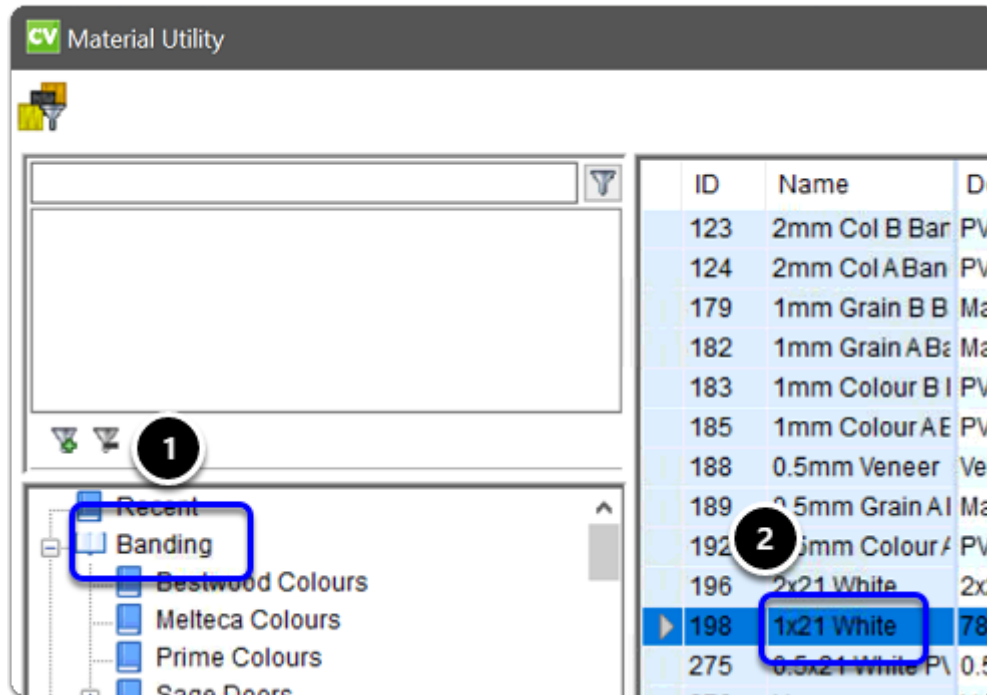


d) Click **Yes** to **replace** 1mm White Banding **with your own 1mm edge band material**

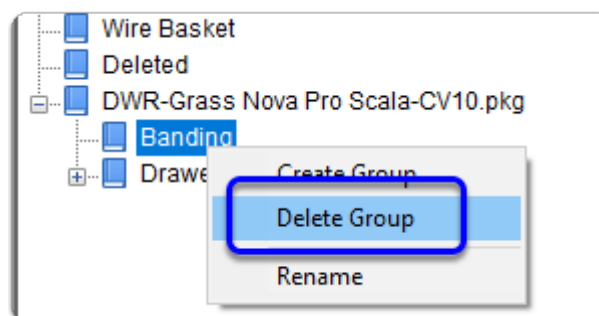


# Blum METABOX drawer system - Post Import

e) Select your own material - This will be used to replace the deleted material (Repeat c,d and e)



f) Delete the empty group



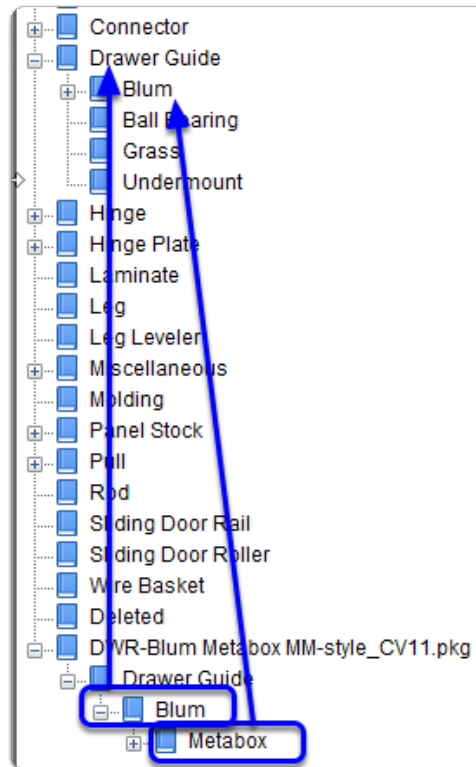
In this section I will move the new 'Blum Metabox' Group up to the 'Guides' Group

a) Expand Drawer Guides > *Left Click and Drag* the 'Blum' group up into the 'Guides' group above

If the Blum group already exists, drag the Metabox group into the Blum group above instead...

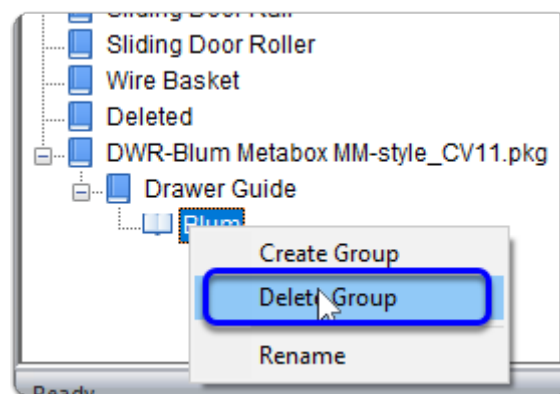
Apps to make Cabinet Vision work for you.

# Blum METABOX drawer system - Post Import



b) Delete any empty groups that remain below the 'Deleted' group.

Now this section is complete > Close the Material Manager



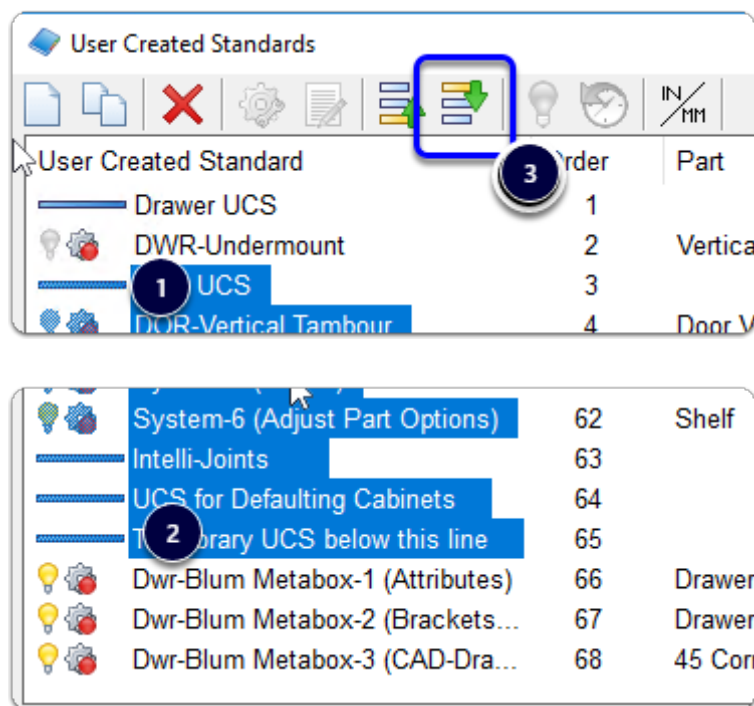
Lastly we need to move the three UCS up above any UCS labelled as 'System'!...

# Blum METABOX drawer system - Post Import

❗ UCS have a sequence and the system UCS must run last. IE: After the Blum Metabox group of UCS...

a) Use this sequence to move UCS up from the bottom






1. *Left Click*
2. *Shift Click* the group of UCS above that you wish to move down
3. Left Click the down arrow three times to move the highlighted group down into position



b) Here is the result...

Apps to make Cabinet Vision work for you.

# Blum METABOX drawer system - Post Import

User Created Standard	Order	Part
Drawer UCS	1	
 DWR-Undermount	2	Vertica
 Dwr-Blum Metabox-1 (Attributes)	3	Drawer
 Dwr-Blum Metabox-2 (Brackets...	4	Drawer
 Dwr-Blum Metabox-3 (CAD-Dra...	5	45 Cor
Door UCS	6	
 DOB Vertical Tambour	7	Door V

 You're all set up - Start a test job and you're good to go