

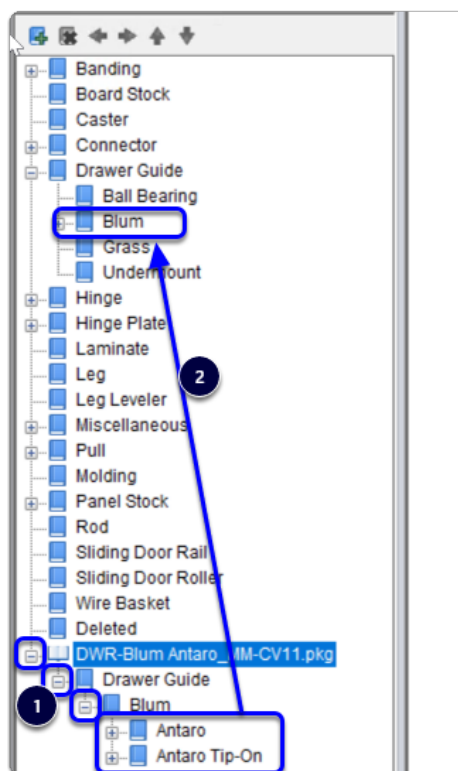
Blum TANDEMBOX Antaro drawer system - Post Import

Contents of this Article...

- Organise groups in Material Manager
- Remove empty groups
- Order of UCS

Organise Groups in Material Manager

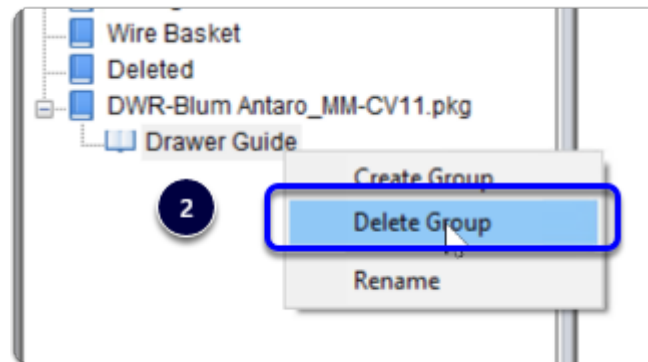
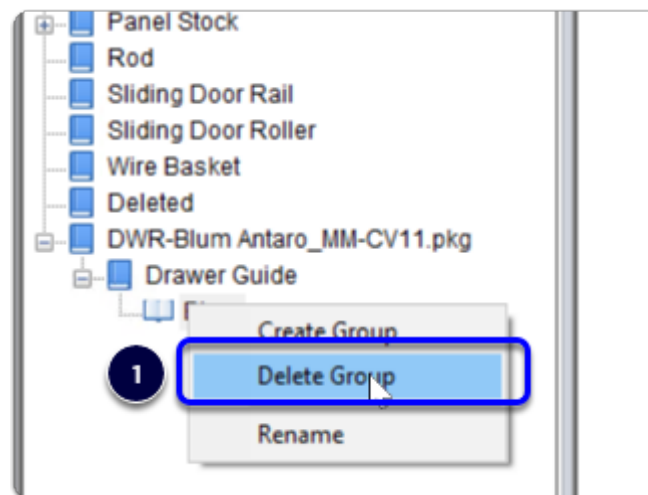
1. Expand the imported group DWR-Blum Antaro > Drawer Guide > Blum
2. Move up into the main Drawer Guide Group > Left Click Drag



Remove Empty Groups

1. Right Click > Delete
2. Repeat as needed

Cabinet Vision Training - Blum TANDEMBOX Antaro drawer system - Post Import



Order of UCS

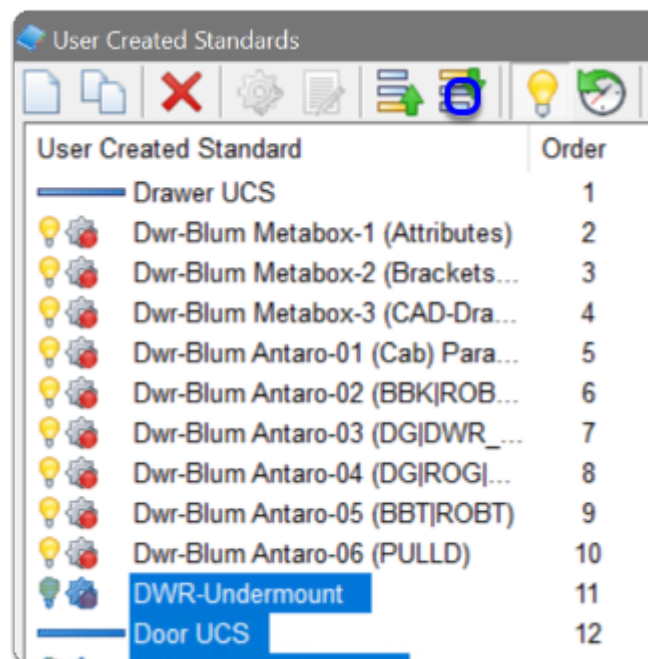
1. Left Click - Shift Left Click all UCS that you wish to move down
2. Arrow the selected UCS down (6 times)

Cabinet Vision Training - Blum TANDEMBOX Antaro drawer system - Post Import

Intelli-Joints	69
IJ - Cab Parameters	70
IJ - Horizontal Part Joints	71
IJ - Vertical Part Joints	72
IJ - Back Joints	73
IJ - Edge Numbers	74
UCS for Defaulting Cabinets	75
Temporary UCS below this line	76
EDGE Parameter for Backs	77
Temp Delete Hinge Drilling	78
Dwr-Blum Antaro-01 (Cab) Para...	79
Dwr-Blum Antaro-02 (BBK ROB...	80
Dwr-Blum Antaro-03 (DG DWR_...	81
Dwr-Blum Antaro-04 (DG ROG ...	82
Dwr-Blum Antaro-05 (BBT ROBT)	83
Dwr-Blum Antaro-06 (PULLD)	84

User Created Standards	
User Created Standard	Order
Drawer UCS	1
Dwr-Blum Metabox-1 (Attributes)	2
Dwr-Blum Metabox-2 (Brackets...	3
Dwr-Blum Metabox-3 (CAD-Dra...	4
DWR-Undermount	5
Door UCS	6

Cabinet Vision Training - Blum TANDEMBOX Antaro drawer system - Post Import



❗ **IMPORTANT** - Order the Dwr-Advanced UCS set to be after Dwr-Blum Antaro UCS set

💡 Happy days. Move on to read about whats included and start a test job!