

Apps to make Cabinet Vision work for you.

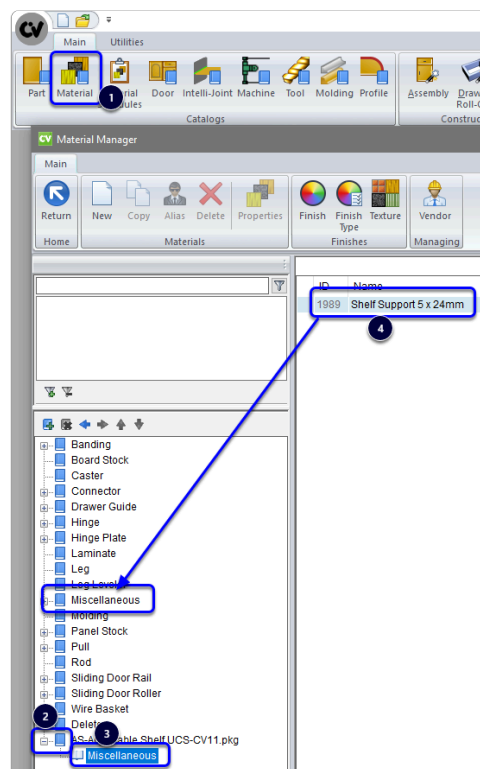
Adjustable Shelf Pin Options - Post Import

💡 Contents of this Article...

- Organise imported materials in the Material Manager
- Add price to shelf support material
- Set up the shelf support material in your Room Schedule
- Check the order of UCS

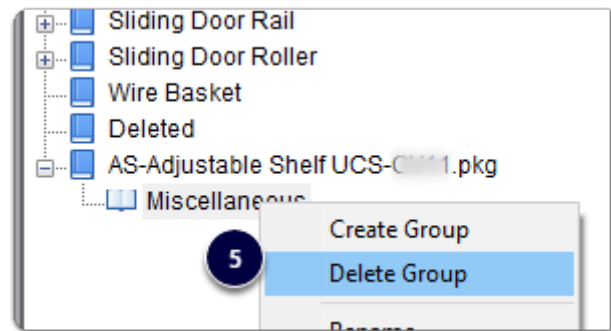
Organise the imported materials > Locate the new shelf supports...

1. Splash screen > Material Manager
2. Expand the new group at the bottom
3. Select the Miscellaneous group
4. Left Click Drag the shelf support over to your existing Miscellaneous group
5. Right Click > Delete Group - Remove all empty groups from the bottom of the material manager



Apps to make Cabinet Vision work for you.

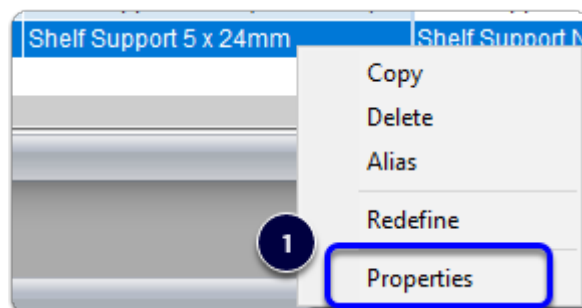
Adjustable Shelf Pin Options - Post Import



Edit the Shelf Support material price...

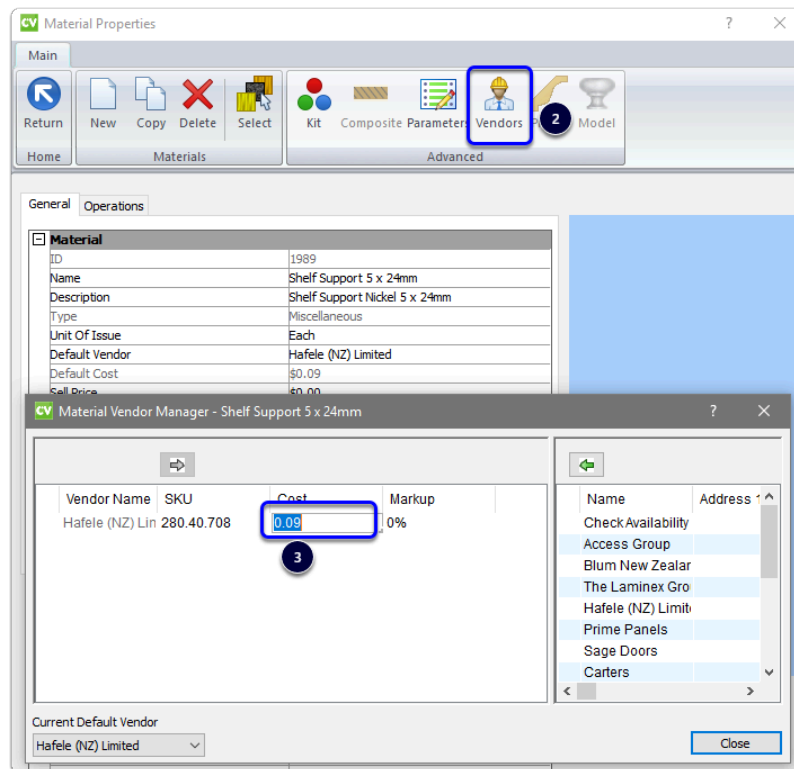
While we're in the material Manager, locate the material again and check the price of the shelf support

1. Material Manager > Miscellaneous > Right Click the Shelf Support > Properties
2. Vendor
3. Edit your price



Apps to make Cabinet Vision work for you.

Adjustable Shelf Pin Options - Post Import

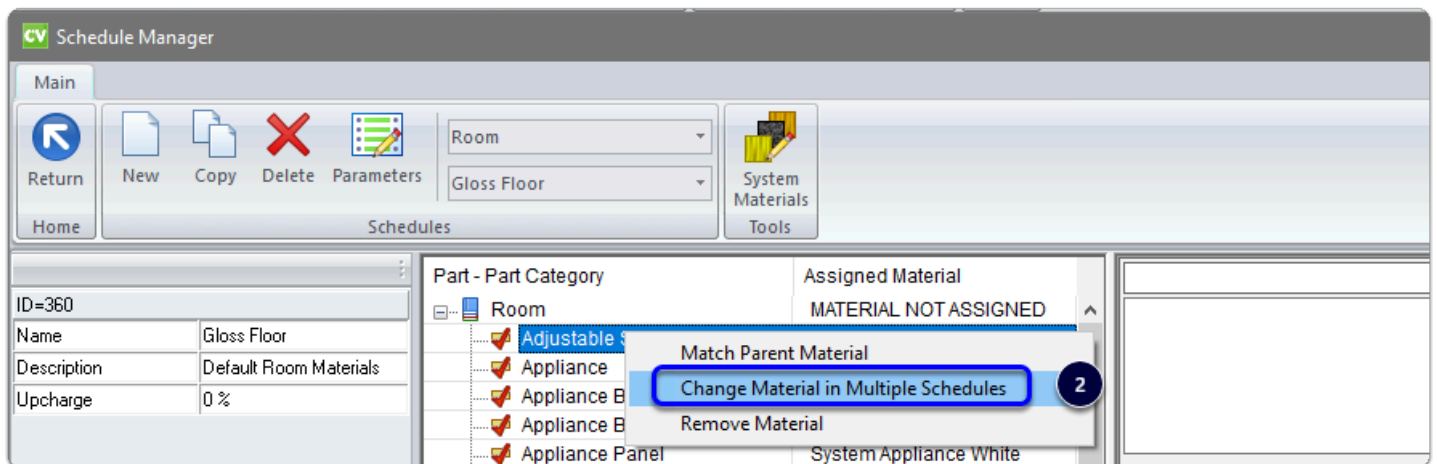
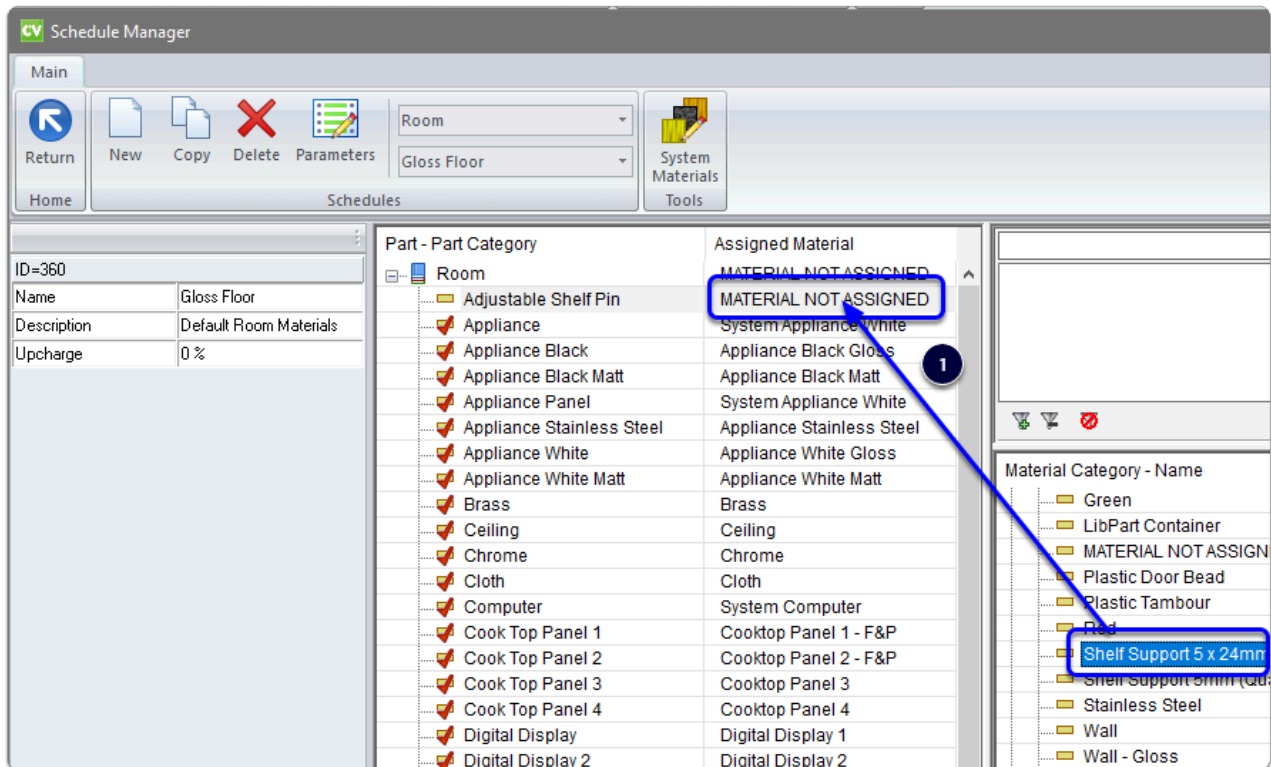


Next we will select the shelf support in the Room material schedules

1. Left Click Drag the shelf support material on to the Adjustable Shelf Pin part in the Room Schedule
2. If you have more than one room schedule - Right Click the Adjustable Shelf Pin and select Change Material in Multiple Schedules
3. Click Apply - All schedules will use the same material

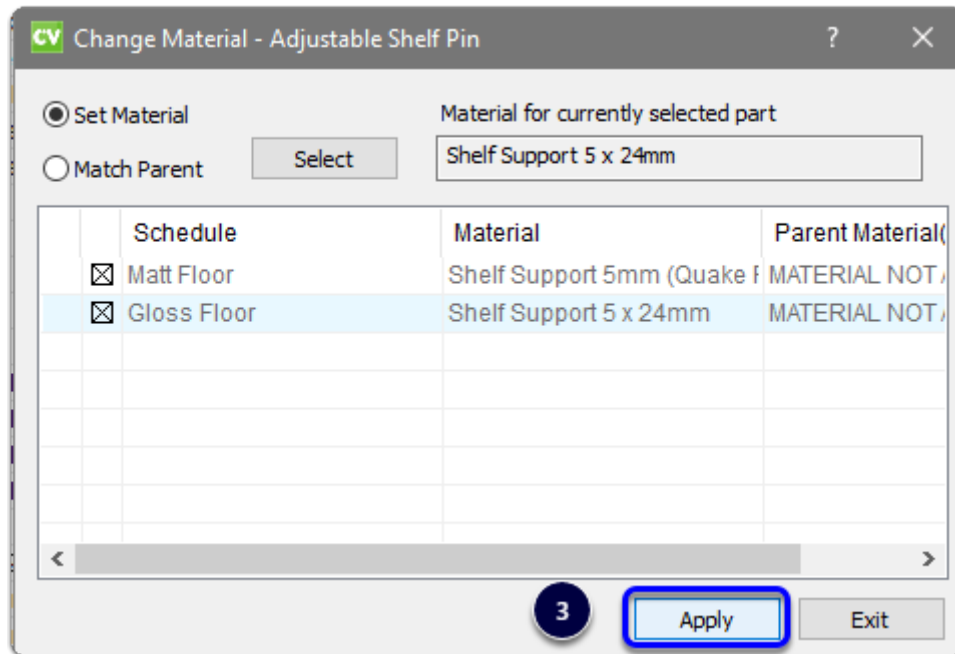
Apps to make Cabinet Vision work for you.

Adjustable Shelf Pin Options - Post Import



Apps to make Cabinet Vision work for you.

Adjustable Shelf Pin Options - Post Import



The final step is to consider the position/order of your UCS...

If you group like UCS together you may wish to move the UCS up in the UCS list. This step is not important for this package.

Time to start a job and try it out!