

Joinery IT Startup Database - Assembly Construction Configuration

Contents of this Article...

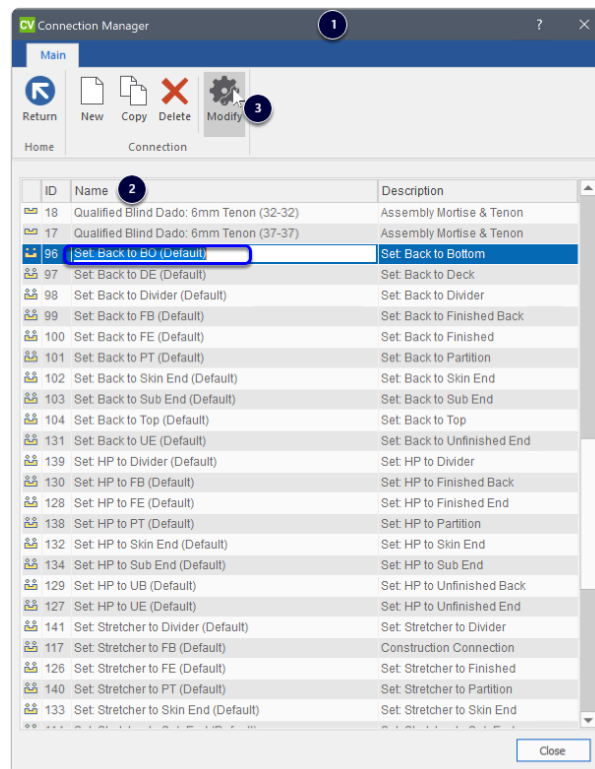
- Connection Manager Configuration (Expected time 30-45 minutes)
 - Edit Default Connection Sets
 - Edit Conditional Connection Sets
- Assembly Manager Configuration (Expected time 20-30 minutes)
 - All connection types already have connection sets assigned
 - Some Defaults may need to be tweaked
- Euro Construction is set to go

Connection Manager Configuration...

The *first part* of integration is to set up all your Connection Set (Defaults)

1. Open the Connection Manager from the Splash Screen
2. Sort by name and modify each set to use connections that suit your method
See description for the full name of the connection the set is assigned to
Out of the box: Cabinet Screw for most connections and Qualified Blind Dado and Screws are assigned to all ends

Cabinet Vision Training - Joinery IT Startup Database - Assembly Construction Configuration

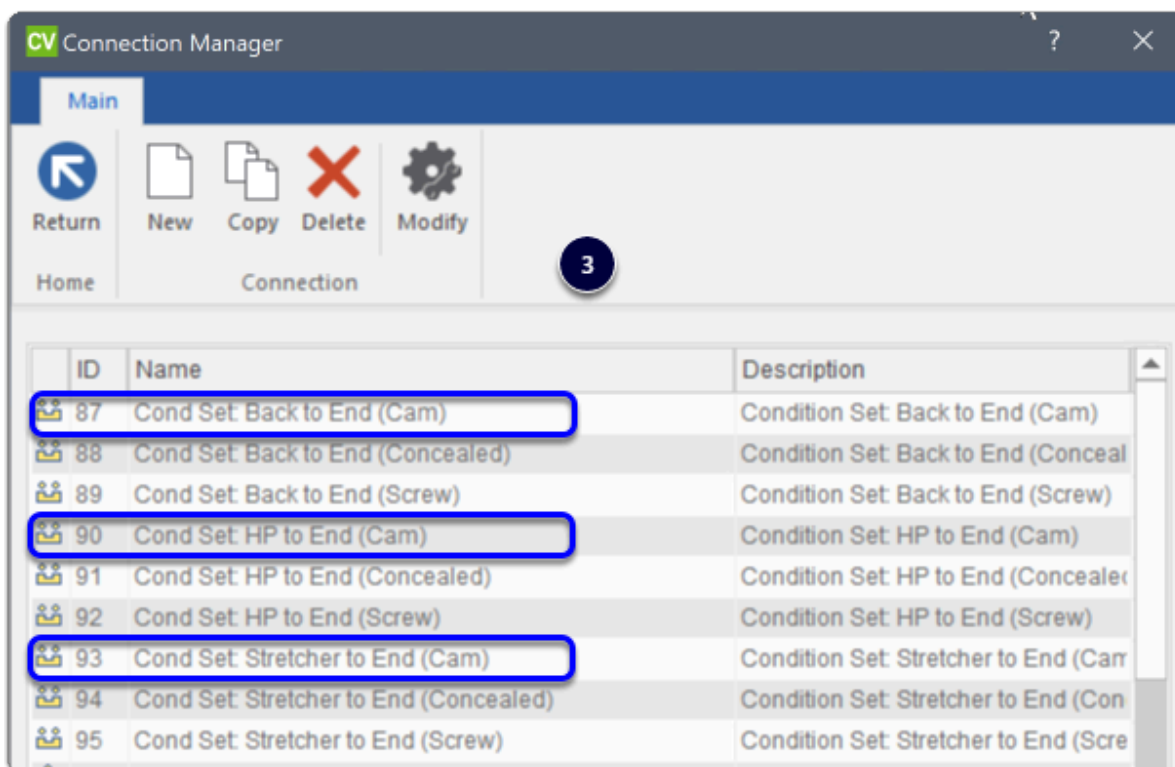
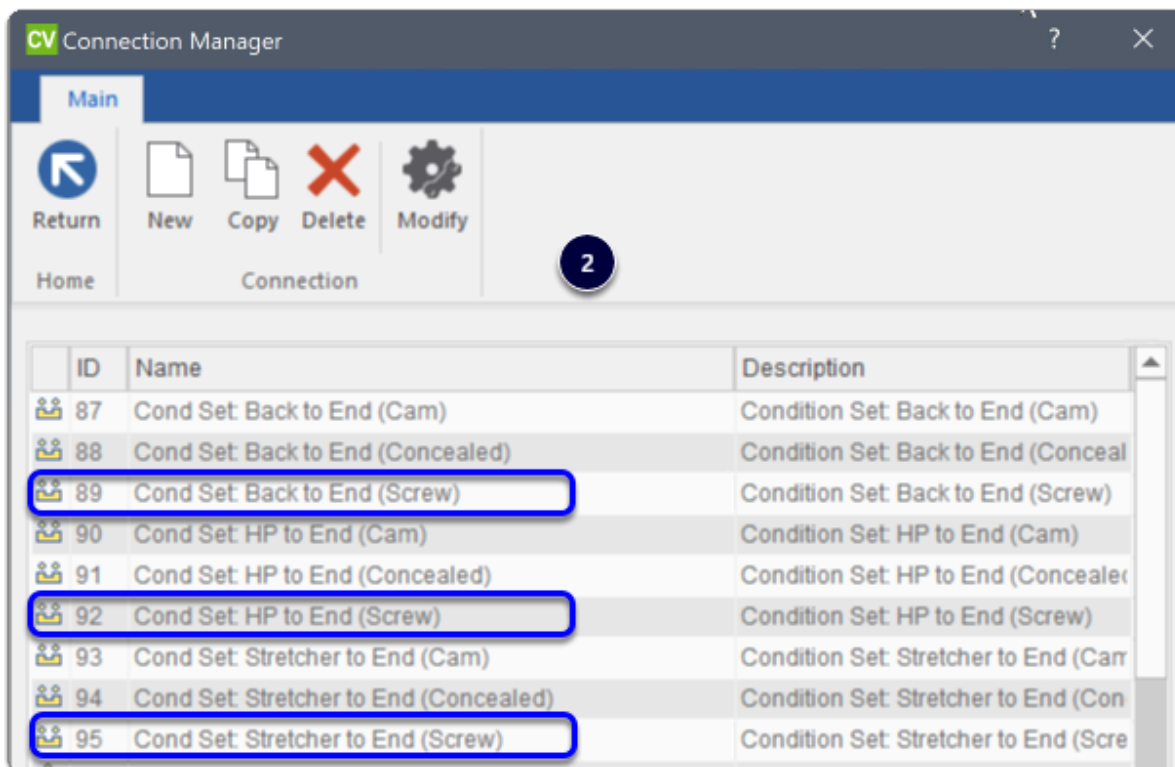


The *second part* of integration is to set up Condition Connection Sets

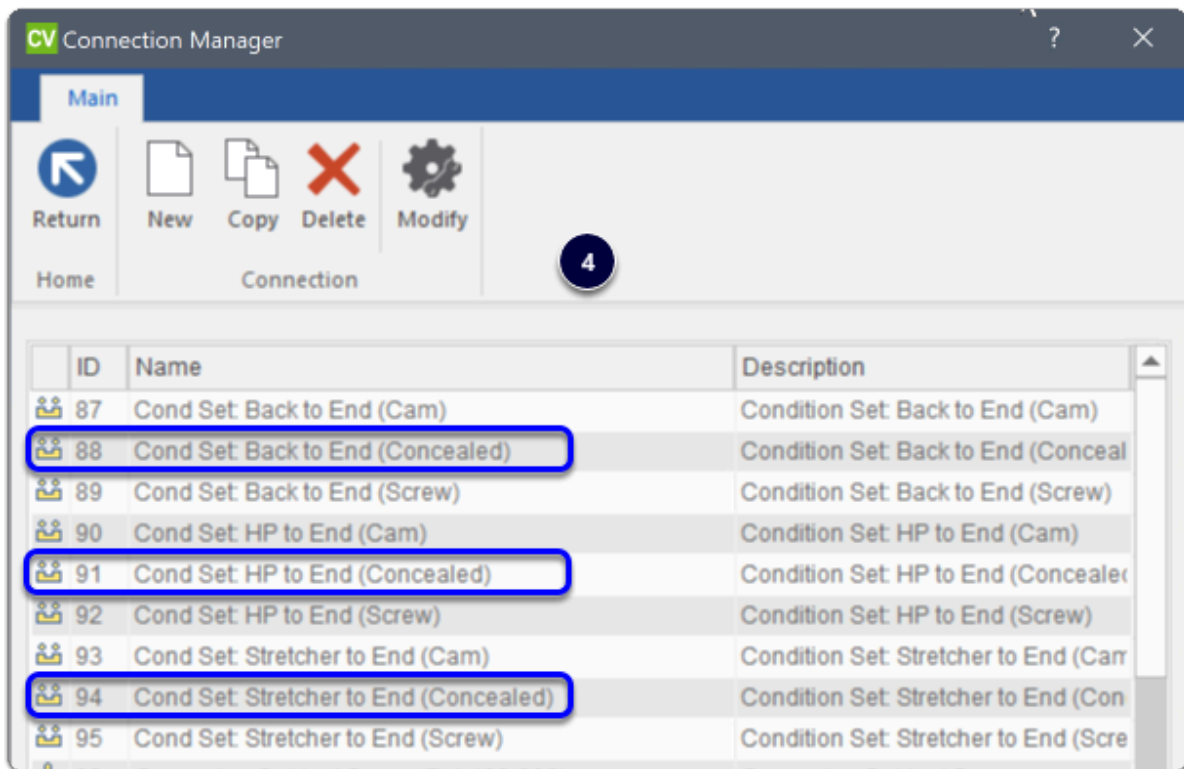
- You can plan to have three additional types of assembly part connections with conditions and connection sets already configured for "Screw", "Cam" and "Concealed" These sets should be modified to suit your own business solutions
 - Suggestion for Screw plus Mortise and Tenon defaults
 - Condition Set: Screw = Screw with butt joint
 - Condition Set: Cam = Rafix
 - Condition Set: Concealed = Mortise and Tenon (only)
 - Suggestion for Confirmat Screw and Dowel defaults
 - Condition Set: Screw = Confirmat Screw (only)
 - Condition Set: Cam = Minifix Cam and Dowel
 - Condition Set: Concealed = Dowel (only)
1. None (These sets are not required and do not exist - Conditions set to none in assembly connections)
 2. Screw (Database default is Confirmat Screw and Dowel)
 - Edit Cond Set: Back to End (Screw)
 - Edit Cond Set: HP to End (Screw)
 - Edit Cond Set: Stretcher to End (Screw)
 3. Cam (Database default is Minifix Cam and Dowel)
 - Edit Cond Set: Back to End (Cam)
 - Edit Cond Set: HP to End (Cam)
 - Edit Cond Set: Stretcher to End (Cam)

Cabinet Vision Training - Joinery IT Startup Database - Assembly Construction Configuration

4. Concealed (Database default is Dowel)
Edit Cond Set: Back to End (Concealed)
Edit Cond Set: HP to End (Concealed)
Edit Cond Set: Stretcher to End (Concealed)



Cabinet Vision Training - Joinery IT Startup Database - Assembly Construction Configuration



Assembly Manager (Connection Branch) Configuration

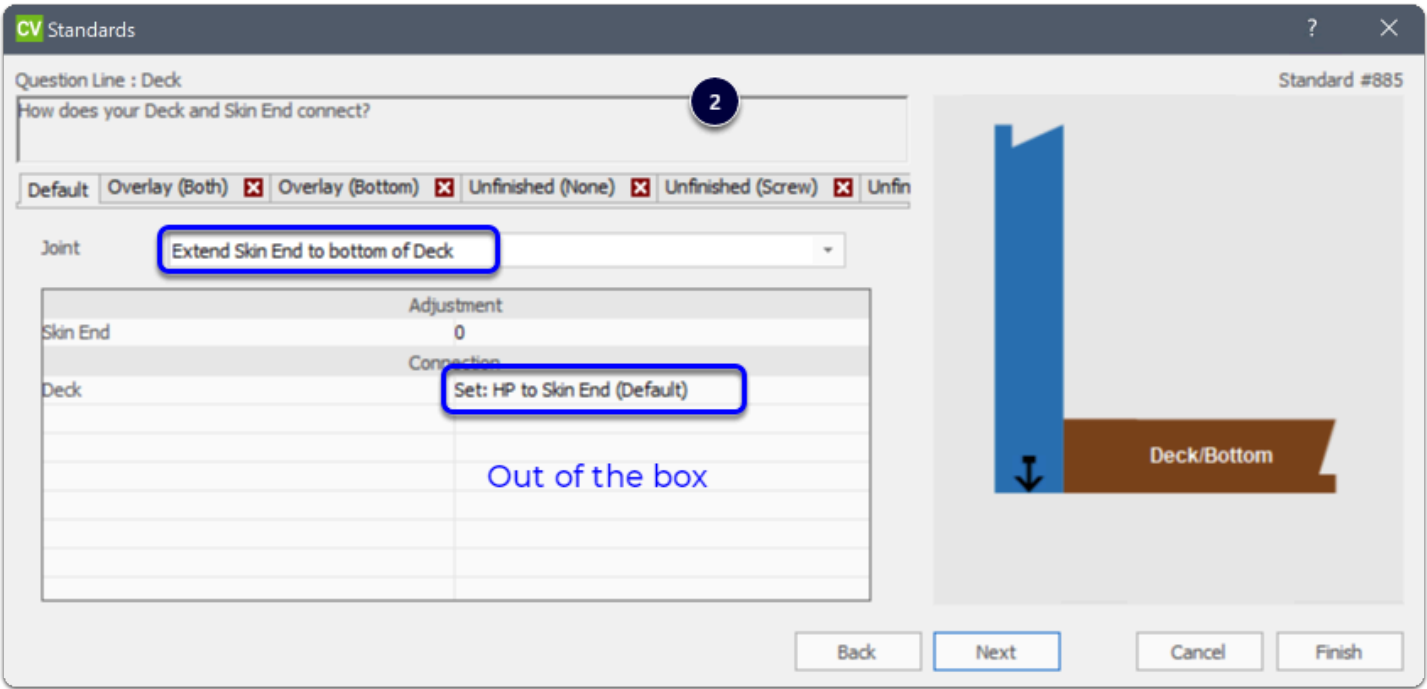
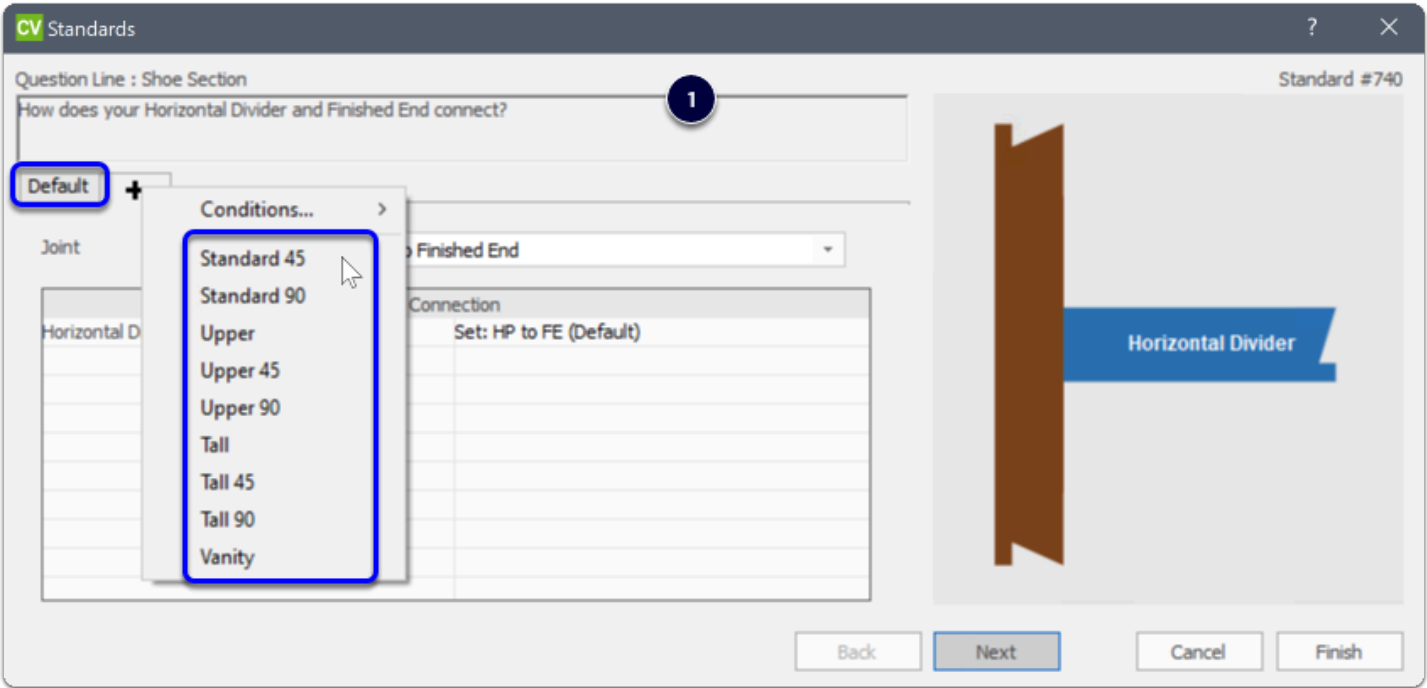
Its a good time to start a fresh job and visualise/plan which default connections (if any) may need a tweak

- View your base assembly first and take note of which parts connection needs additional edits
- All sets for use on default and regular construction break-outs are named with "(Default)" in the set name

NOTE: If you rebate or dado backs into ends or bottoms, its likely you will want to create a dado connection for this before getting started on the Assembly Manager

1. **Important:** While tweaking default construction connection joints, only edit Default, Standard 45, Standard 90, Upper, Upper 45, Upper 90, Tall, Tall 45, Tall 90, and Vanity
2. **If your default involves changing the direction of the joint**, and only "if", it's a good idea to re-assign an appropriate connection set. Thus retain expectant results and flexibility within the job

Cabinet Vision Training - Joinery IT Startup Database - Assembly Construction Configuration



Cabinet Vision Training - Joinery IT Startup Database - Assembly Construction Configuration

