

Apps to make Cabinet Vision work for you.

Strip Handles - Generic Edition - Package

Contents of this Article...

- Support Package - Joinery IT Catalog for CV11
- Alert - Start with a backup
- Check Door Band (A limitation of this package is that band letters **P, Q, W, X, Y,** and **Z** must be available for the import)
- Extract package from the download
- Import into Cabinet Vision using the Setup Package Utility

Remember to install the Joinery IT Catalog for CV11

Follow the instructions included with that app - We recommend doing it prior to setting this one up.

Before you get started is a great time to back up your Cabinet Vision files...

- If something doesn't go exactly to plan you'll be able to start over
- Take a look at our ScreenSteps on the [Backup Utility](#)

Apps to make Cabinet Vision work for you.

Strip Handles - Generic Edition - Package

Checking for Door Banding...

Our first step is to take a look at the Part Catalog.

- We're checking to make sure band letters **P, Q, W, X, Y** and **Z** are available for the package to use during import

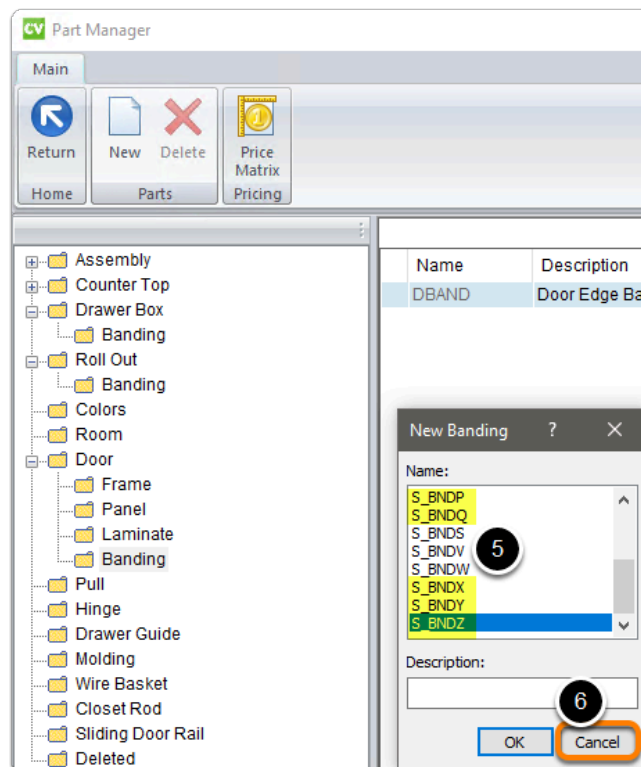
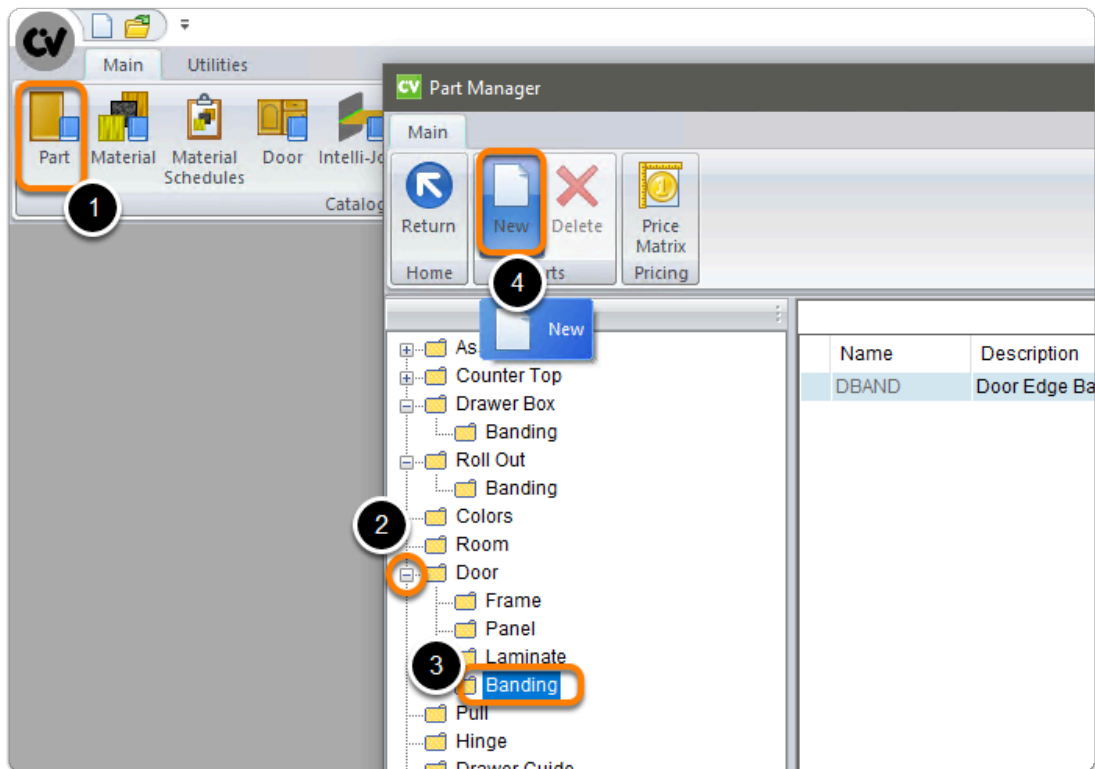
In the images following we are going through the motions of 'adding a new banding part' so we can check 'P band' and 'Q band' are available

1. Splash Screen > Part Manager
2. Left Click and Expand the Door group
3. Left Click Banding group
4. Left Click New
5. Review - We're checking that S_BNDP, S_BNDQ, S_BNDW, S_BNDX, S_BNDY and S_BNDZ are in the list
6. Cancel

If all band letters are in the list, move on to unzipping the download.

Apps to make Cabinet Vision work for you.

Strip Handles - Generic Edition - Package



Apps to make Cabinet Vision work for you.

Strip Handles - Generic Edition - Package

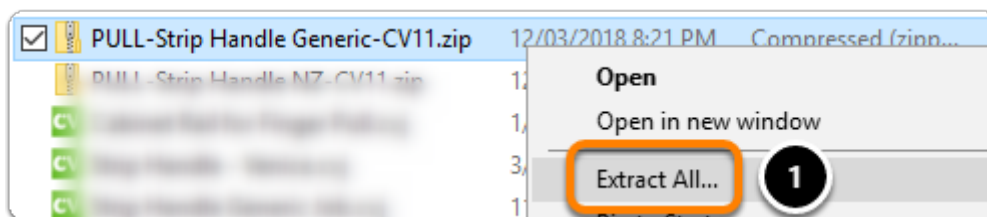
! If any of the **P, Q, W, X, Y** and **Z** band parts are missing from the list, this indicates the part is being used already...

- You will need to locate them and replace them. Using an alternate band letter
- This must be completed **before you proceed**

i Our next step is to Unzip the download

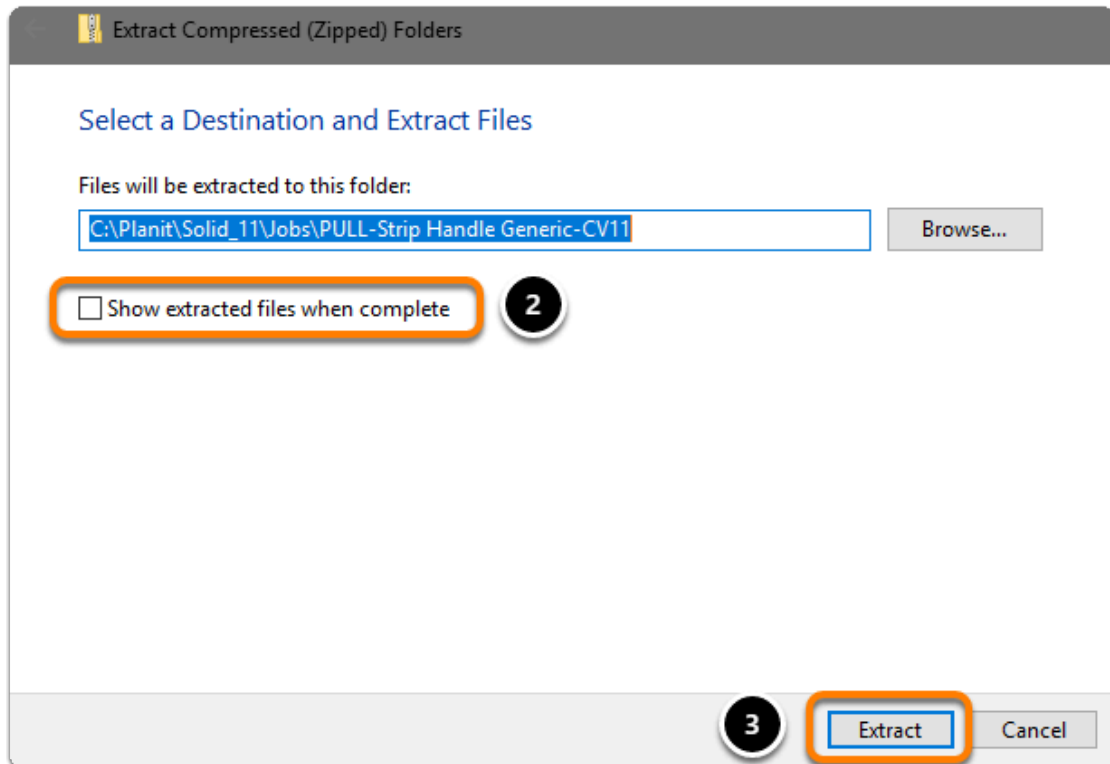
1. Right click > Extract All
2. Un-check "Show extracted files when complete"
3. Extract

💡 An easy way is to place a copy of the zip file into your job folder > Right Click and 'Extract All'



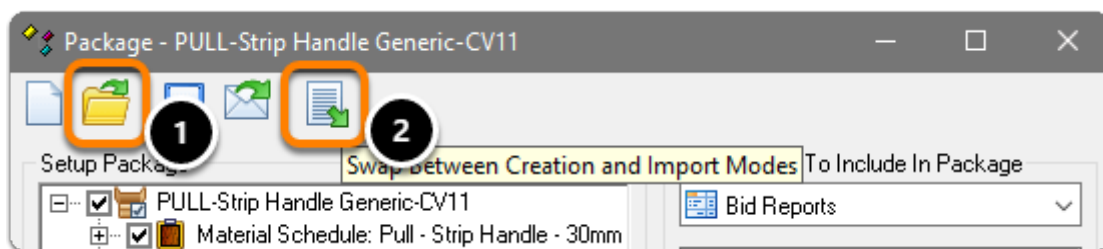
Apps to make Cabinet Vision work for you.

Strip Handles - Generic Edition - Package



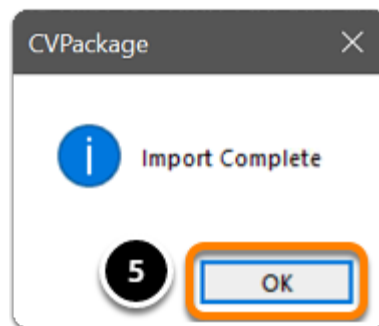
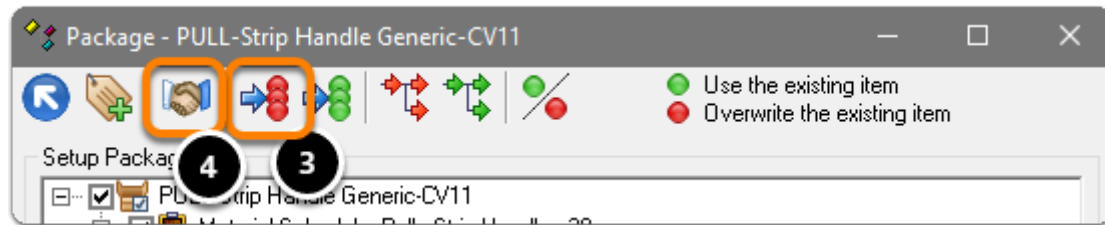
i We're ready to import the package into Cabinet Vision > Splash Screen > Utilities > Setup Utility

1. Open the package
2. Switch to import mode - Swap between Creation and Import Modes
3. Overwrite all Matches
4. Import Package Contents
5. Click OK



Apps to make Cabinet Vision work for you.

Strip Handles - Generic Edition - Package



i Import Complete - You're nearly done - Continue on to the 'Post Import Cleanup'...